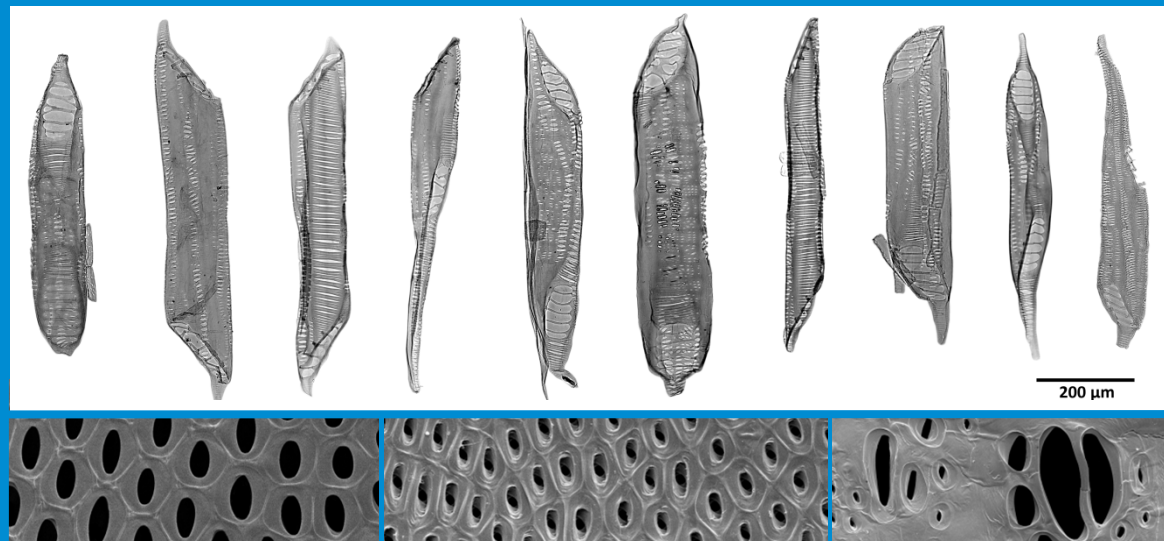


Identification of Mixed Tropical Hardwood in Pulp and Paper

Dr. Andrea Olbrich

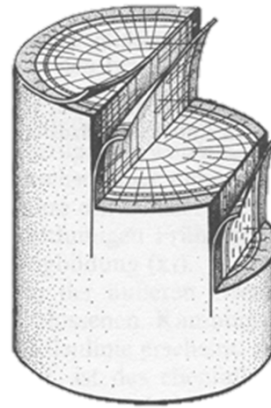
Thünen Institute of Wood Research



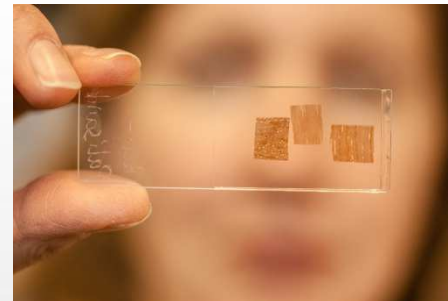
Introduction

Wood identification

- scientific collection
12.000 species
35.000 specimens
- 80-100 characters



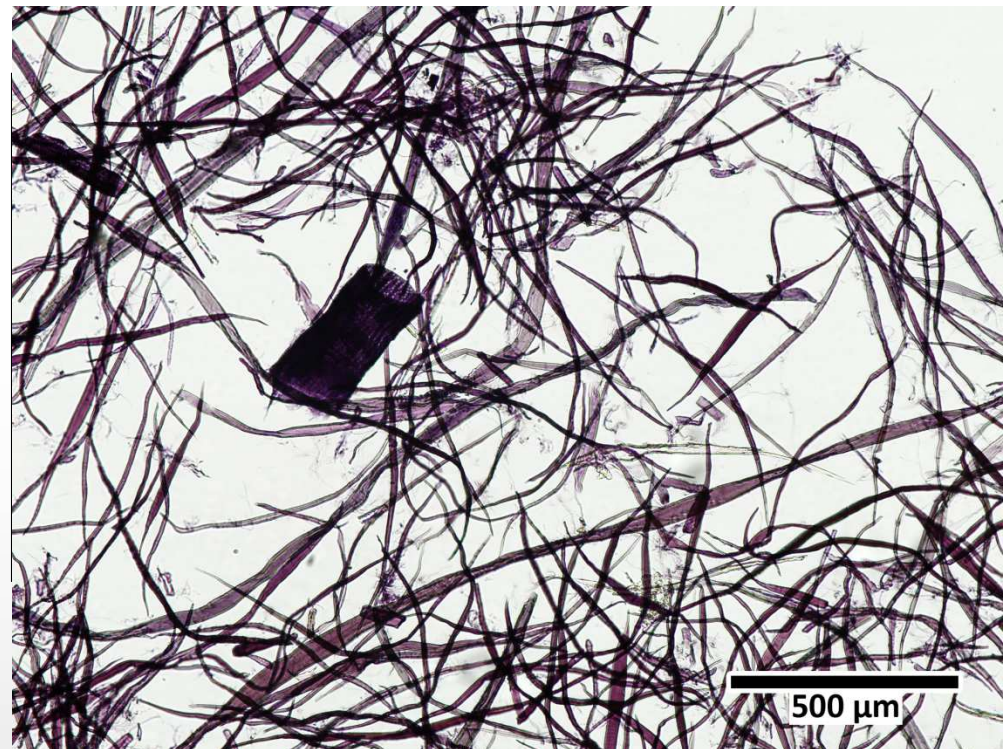
Photos: Ilja Hendel



Introduction

Identification of pulp and paper

- Defibration, staining of cells
- light microscopy
- 12 main characters
- matching with references



Introduction

Identification of Mixed Tropical Hardwood in paper

references from Southeast Asia

28 timbers:
macerated cells

23 timbers:
pulp

microscopy



References

- 28 timbers of scientific collection
- maceration
- preparation
- microscopy

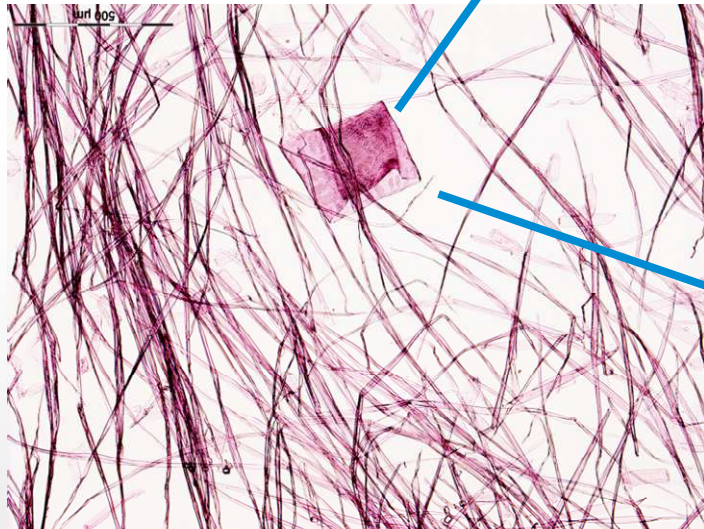
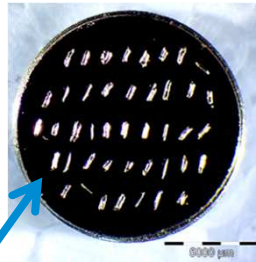
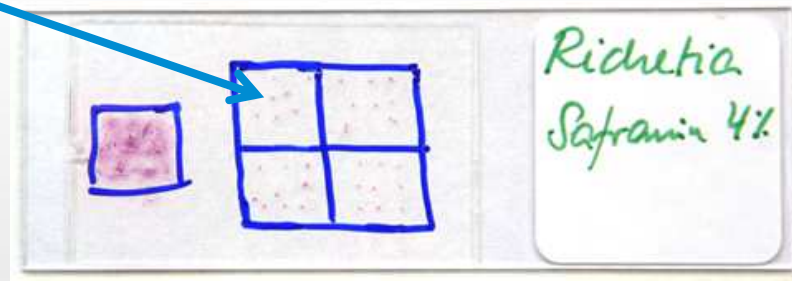
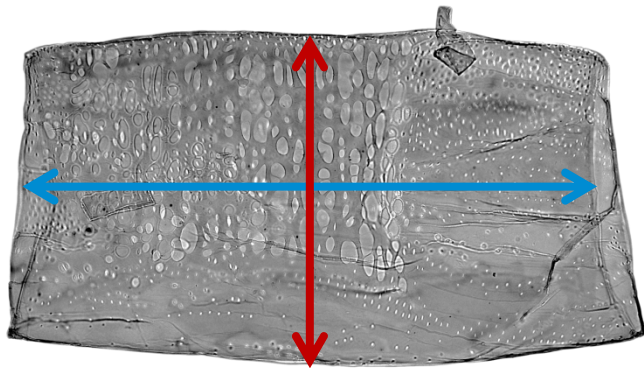


Photo: Ilja Hendel



Light Microscopy

Dimensions of vessel elements



Keruing (*Dipterocarpus* spp.)

↔ Length

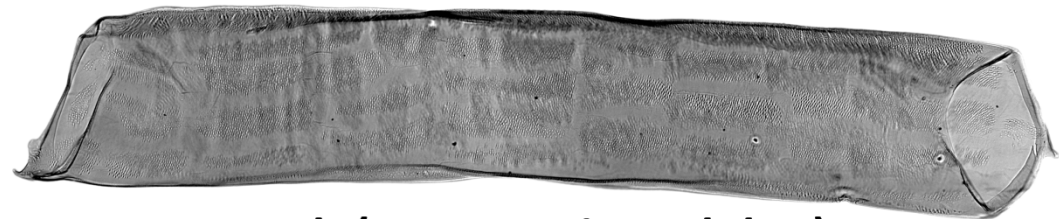
↔ Width



Api Api (*Avicennia marina*)



Red Mangrove (*Rhizophora* spp.)



Punah (*Tetramerista glabra*)



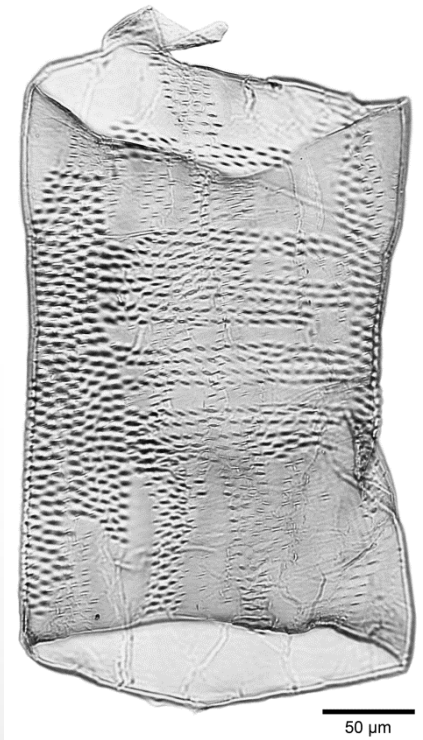
Ramin (*Gonystylus* spp.)



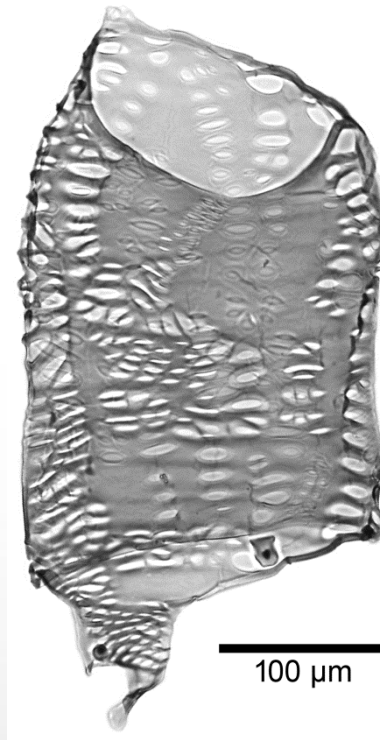
1 mm

Light Microscopy

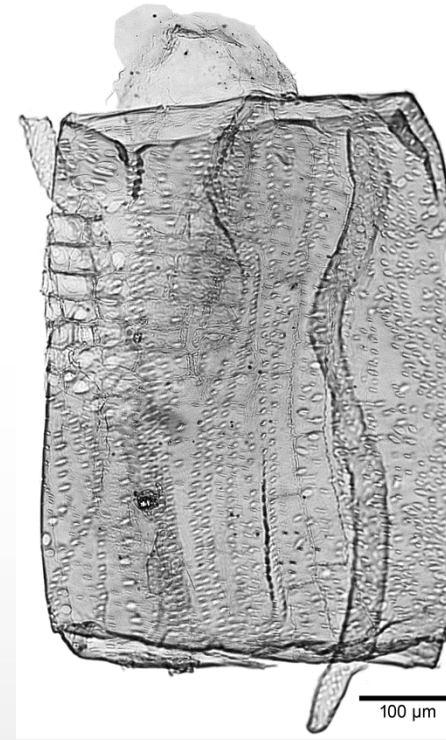
Perforations (simple and scalariform)



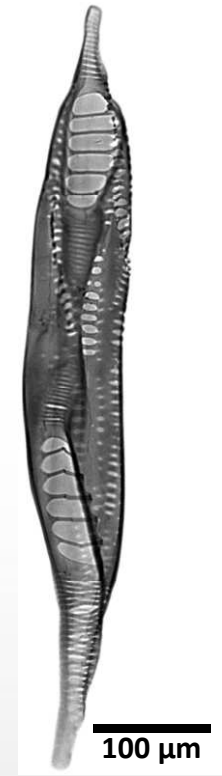
*Acacia
mangium*



Mangifera spp.



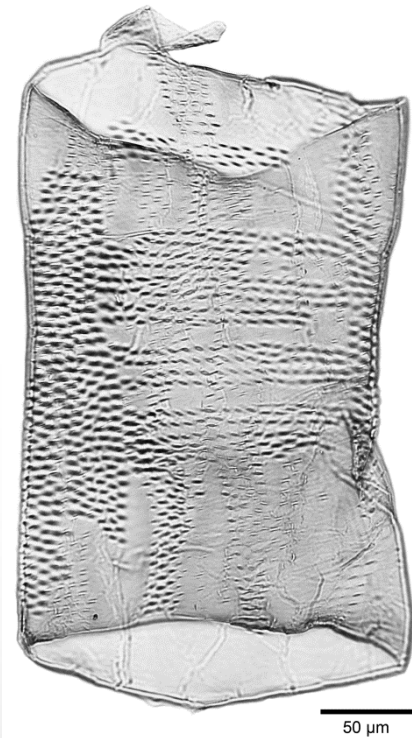
Shorea subg.
Anthoshorea



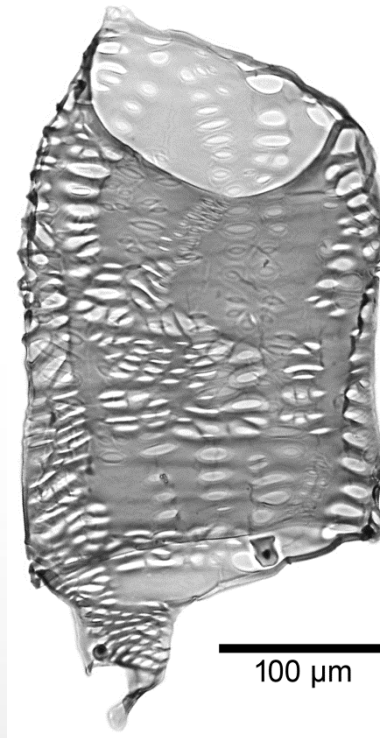
Rhizophora
spp.

Light Microscopy

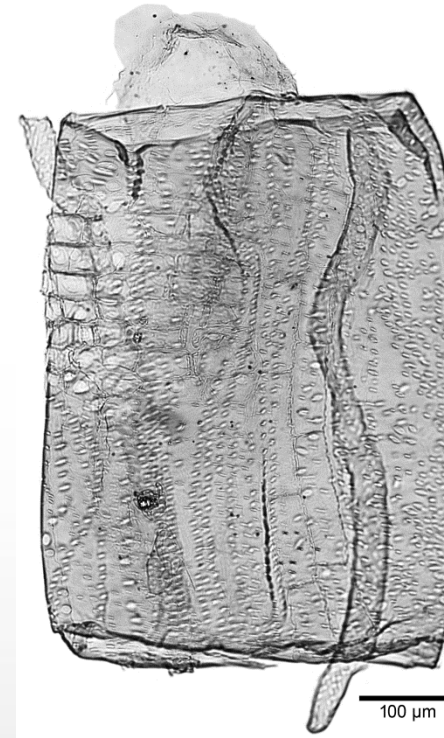
Size and shape of different pit types



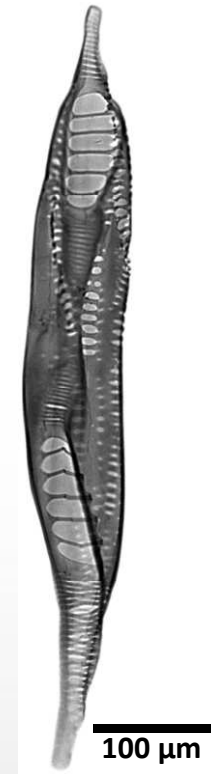
*Acacia
mangium*



Mangifera spp.



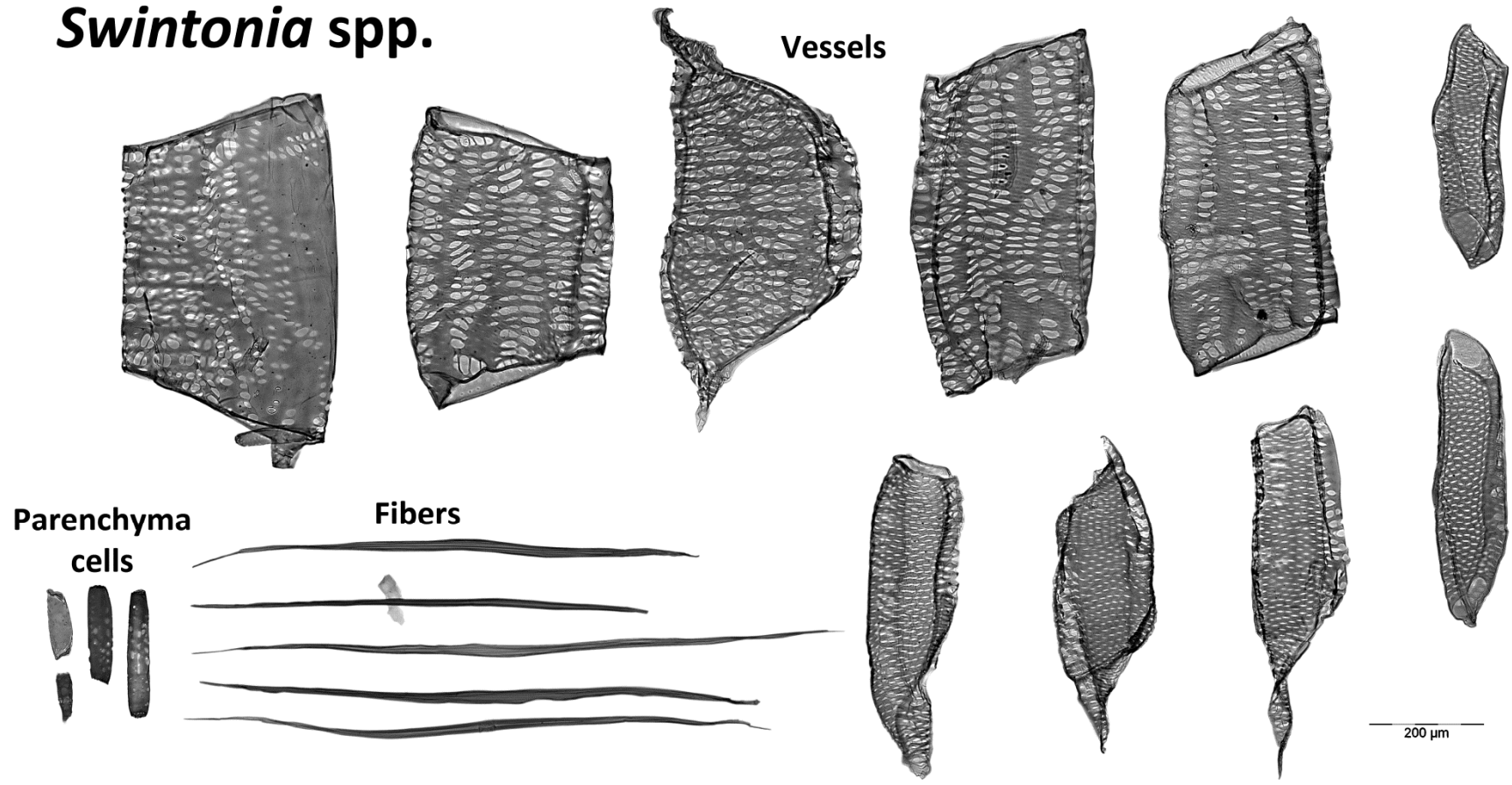
Shorea subg.
Anthoshorea



Rhizophora
spp.

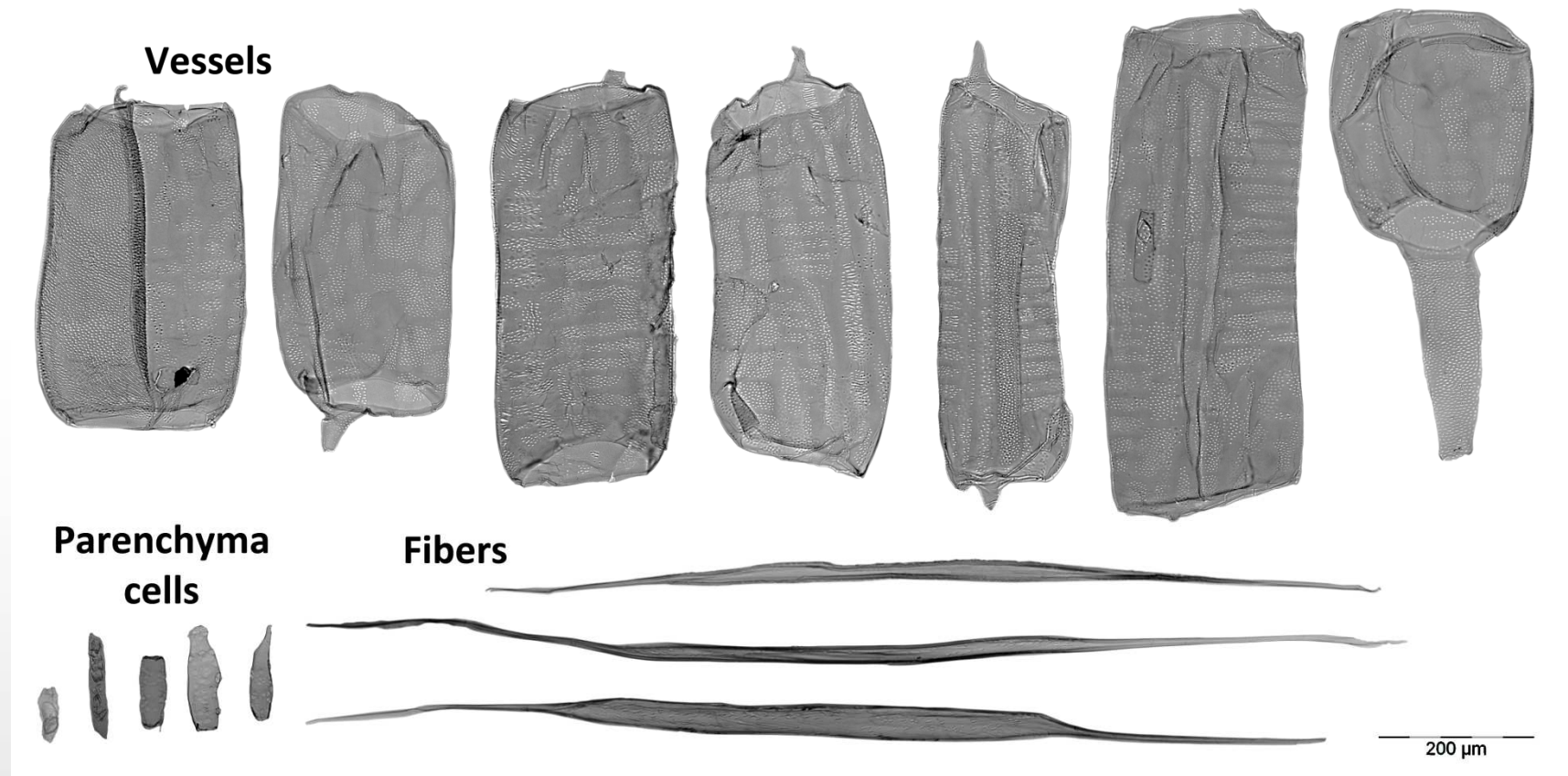
Light Microscopy

Swintonia spp.



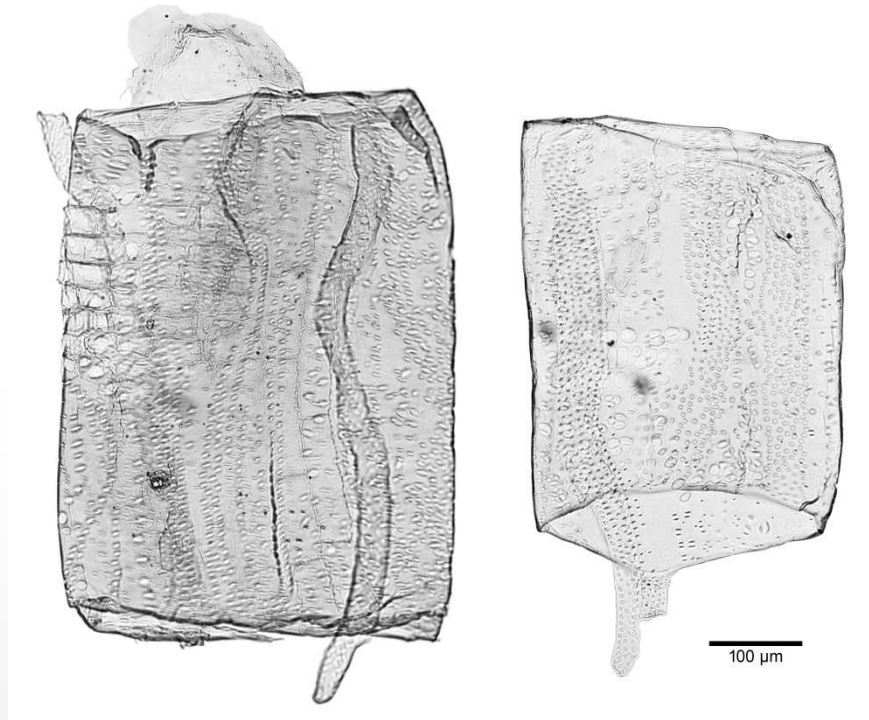
Light Microscopy

Ramin (*Gonystylus* spp.) CITES Annex II



Light Microscopy

Subgenera not distinguishable

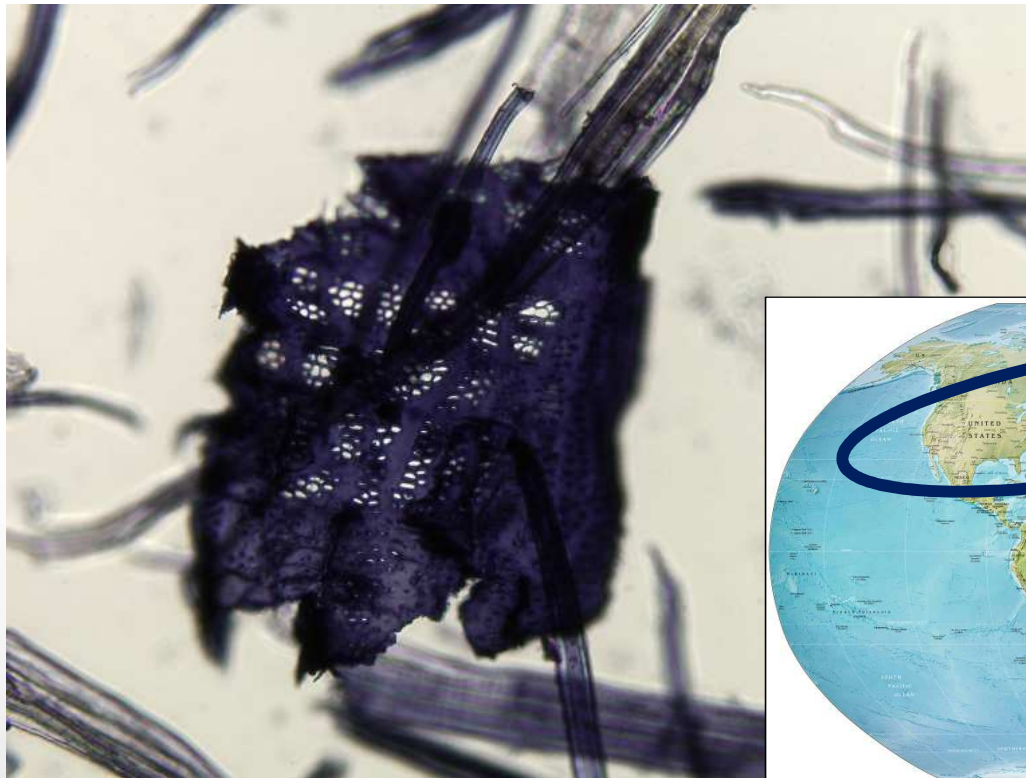


Shorea subg.
Anthoshorea

Shorea subg.
Rubroshorea

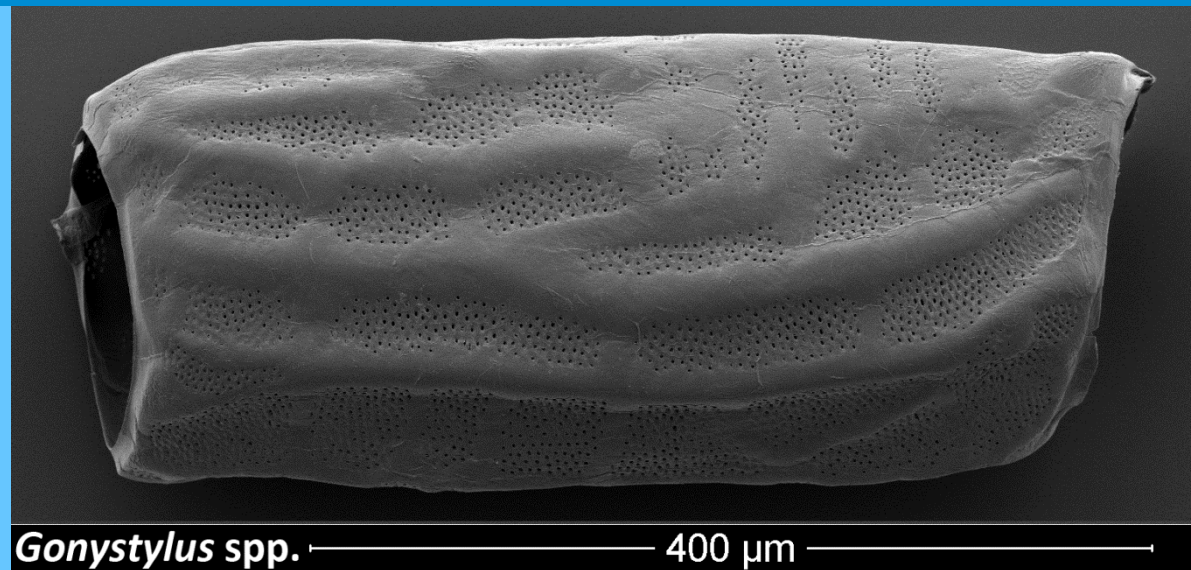
Light Microscopy

More references are needed



Scanning Electron Microscopy

Going into detail...

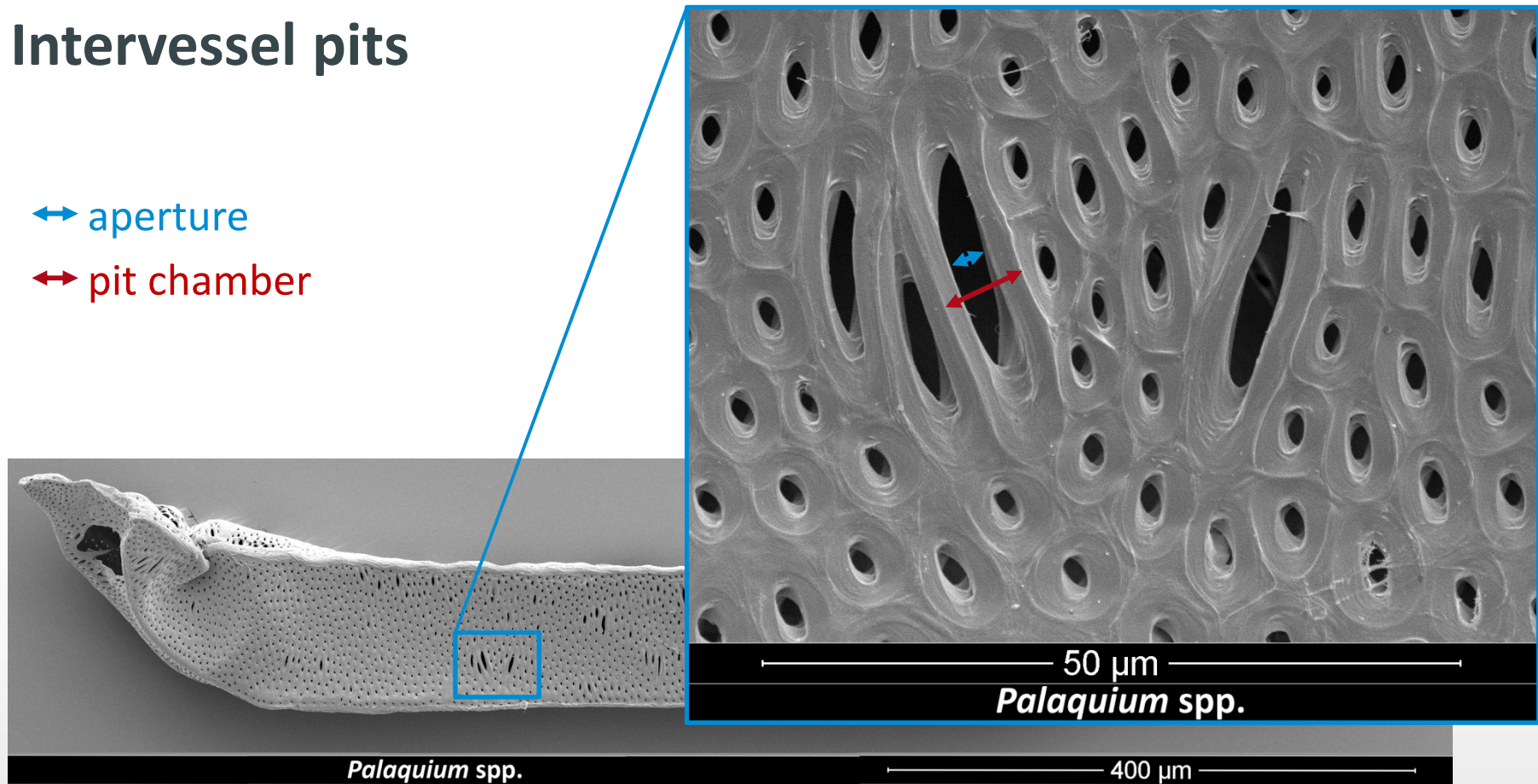


Scanning Electron Microscopy

Intervessel pits

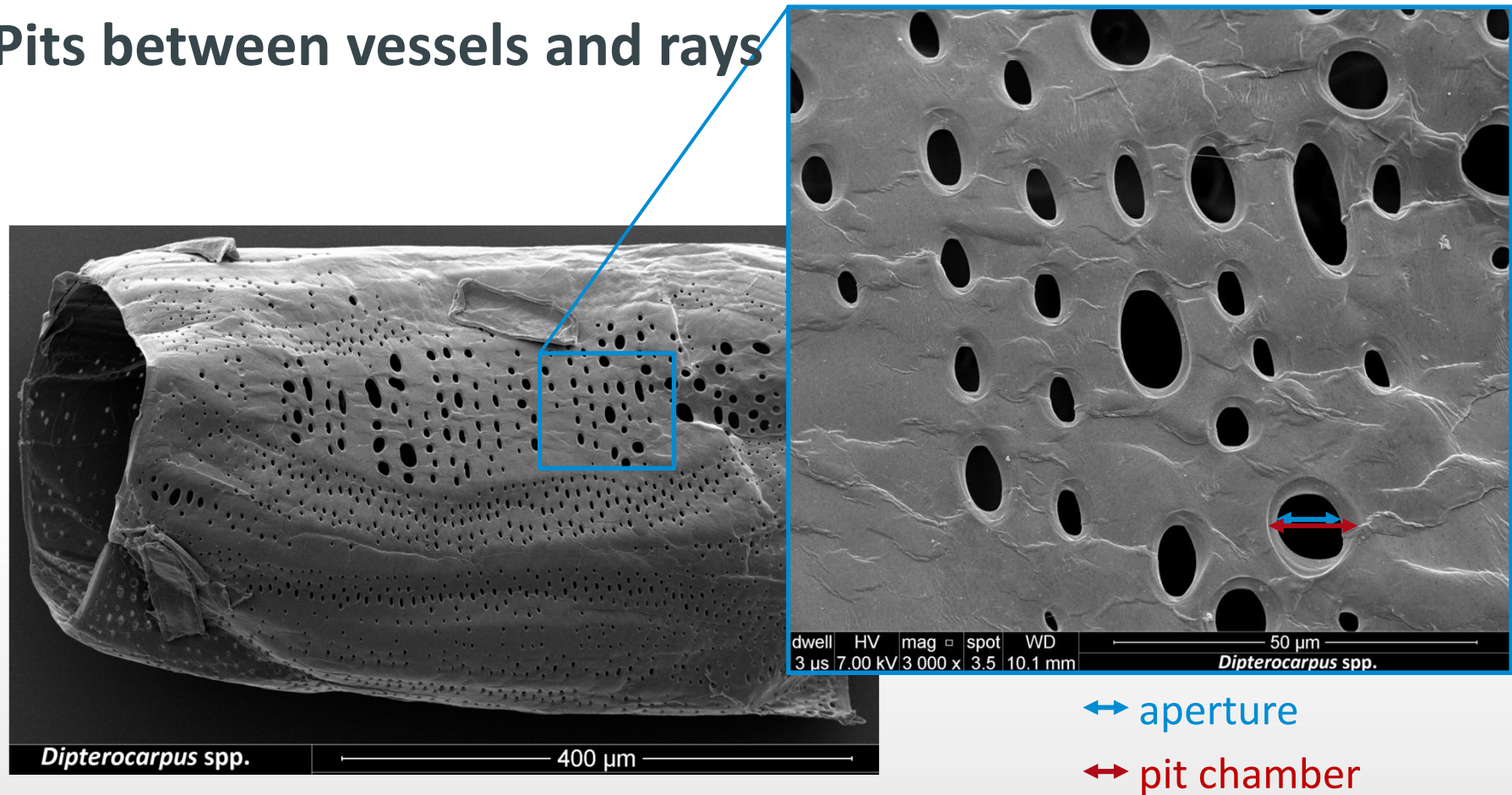
↔ aperture

↔ pit chamber



Scanning Electron Microscopy

Pits between vessels and rays



Summary

- Identification of pulp and paper to the generic level by light microscopy is possible
- Good references, but more are required
- Detailed information provided by electron microscopy

Thanks

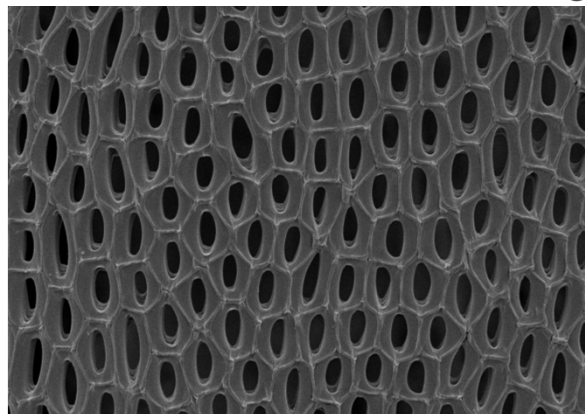
sponsored by



Deutsche
Bundesstiftung Umwelt



Universität Hamburg



Dr. Gerald Koch
Dr. Jürgen Odermatt
Dr. Othar Kordsachia
Stephanie Helmling
Lena Tepe
Saskia Poth
Arne Kuck
Nils Grützmann
Alina Wassink