



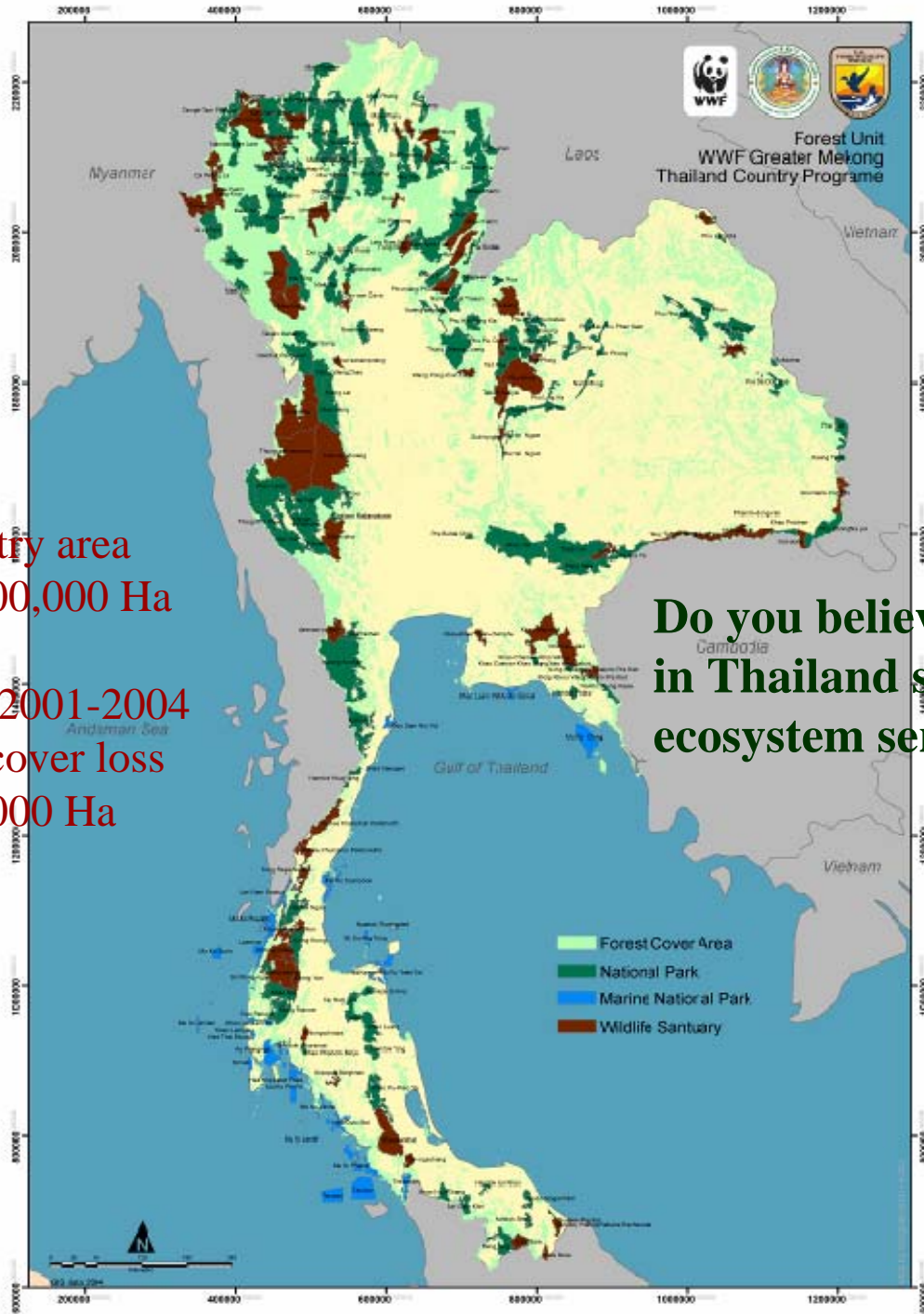
Learning from the field...

The most critical forest sector in Thailand



Forest Habitat Loss





- Country area
~ 51,300,000 Ha
- Year 2001-2004
forest cover loss
~ 320,000 Ha

Thailand has
estimated 33 %
forest cover of
country area,



Do you believe the area of forest cover
in Thailand still provide high value of
ecosystem services to the earth?



18 % of the number
was designed
As Protected Areas





Different meaning

Forest Cover & Forest Habitat



Different value of ecosystem service





WHY

Forest habitat in Thailand are losing



We also need to confirm the problem





Some answer are happening

- **Forest clearing and subsequent land encroachment**
- **Illegal logging**
- **NTFP collection**
- **Influx of refugees and in-migration and increasing community settlement in side protected Area**
- **Further fragmentation**
- **Commercial level and subsistence poaching**
- **Forest fires and repeated burning**
- **and more...**





Forest trade is a part of problem

Although, Cabinet Resolution year 1989 on Canceled Timber Concession



Forest Industry Organization under the Royal Forest Department take role and responsibility on Thailand's timber Trade and planted forest plantation. At present, FIO has total area 185,600 hectares (0.36 % of country area). The three dominant species grown are teak (51%), eucalyptus (17%), rubber tree (5%) and others (27%)



If ignore basic government forest data record, we believe

- FIO can't provide demand of domestic consumption and export.
- Still have illegal logging in PAs and National Forest reserve.
- A case of Siamese rosewood export to China are example.
- Still have import illegal log and sawn timber from neighboring country

We don't have research, monitoring and evaluation so don't have credible data support on this!!!!





NTFP collection is catalyst of forest habitat loss

- Existing community inside and outside along park boundary
- Wildlife disturbance
- Status changed from subsistence poaching to commercial

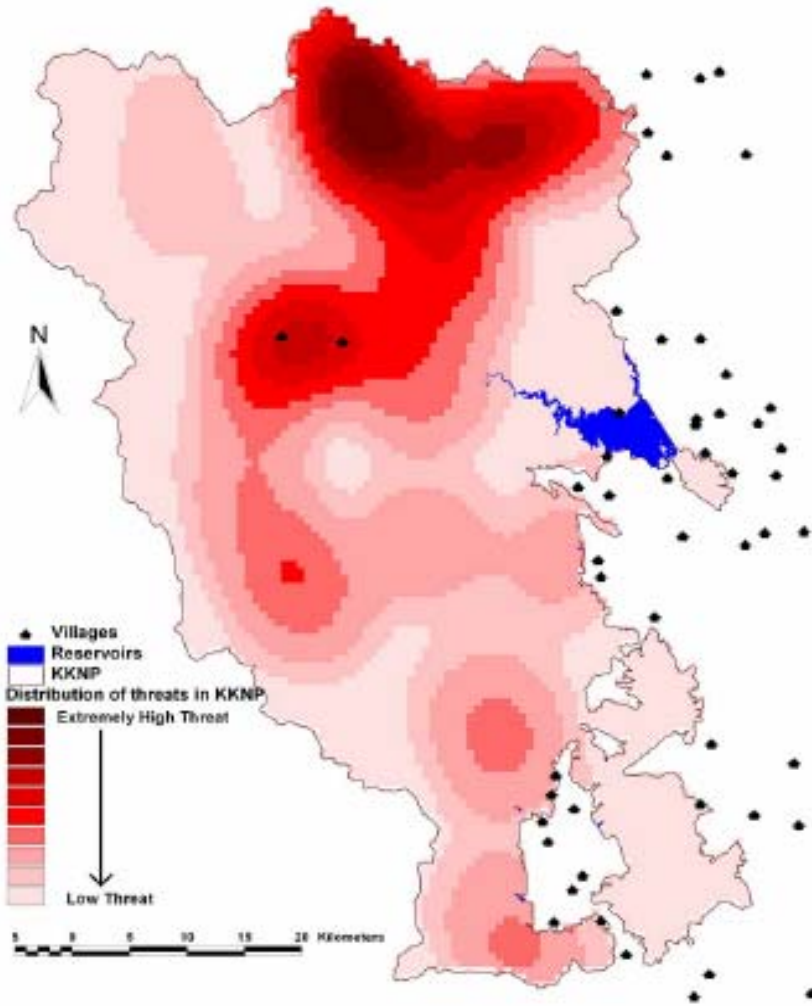
Why we think like this?



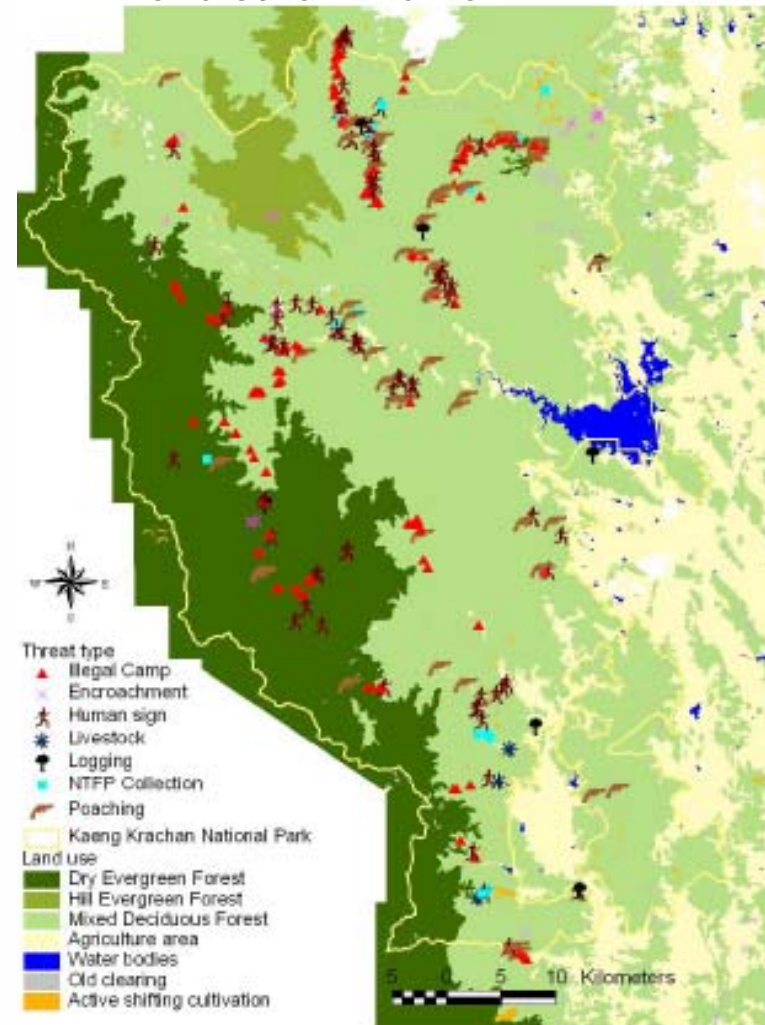


Some answer from field

Distribution of high-risk areas based on threat assessment collected



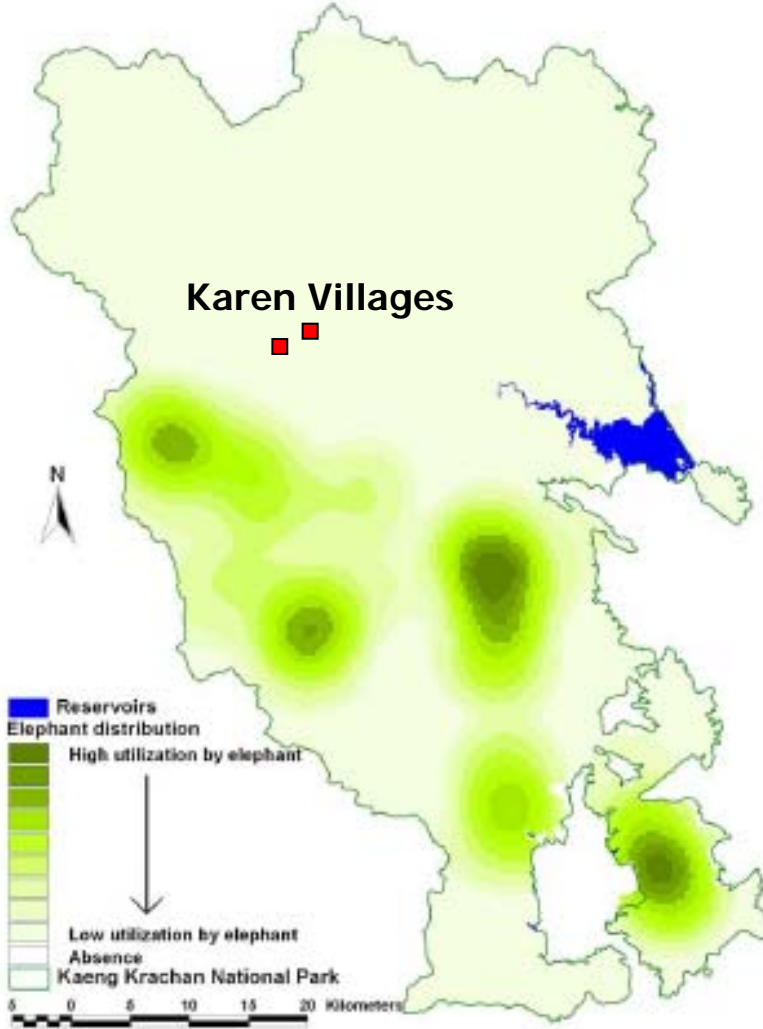
Distribution of threats to elephants and other wildlife in KKNP



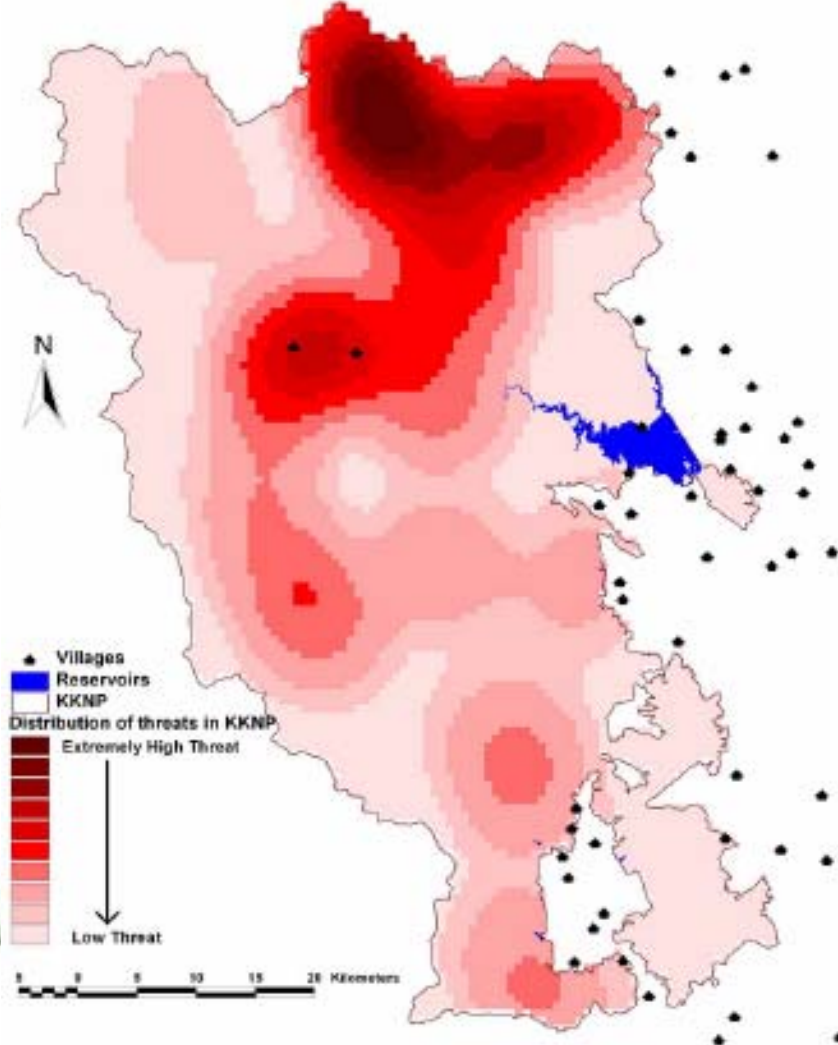


Some answer from field

Distribution of elephants in KKNP (2006)



Distribution of high-risk areas based on threat assessment collected





Last Answer which we are thinking ..

Is it lake or weak of management?

DNP —————> PAs

RFD —————> National Forest Reserve

We have to work hard in field level with all stakeholder.





Need to do for support government decision making

- Forest cover in Pas analysis to identify area of primary forest
- Monitoring illegal logging and NTFP collection in Pas
- Monitoring and evaluation of reforestation area in Thailand

Thank You

