

11 MILLION HECTARES

HONDURAS

A map of Honduras, Central America, showing forest cover. The map is color-coded: dark green for forest (50%), light green for broadleaf (30%), and tan for pine (20%). The word 'HONDURAS' is written in large black letters across the center of the map. The map shows a high concentration of forest in the eastern and southern regions, with broadleaf forest in the central and western regions, and pine forest in the northern and mountainous regions.

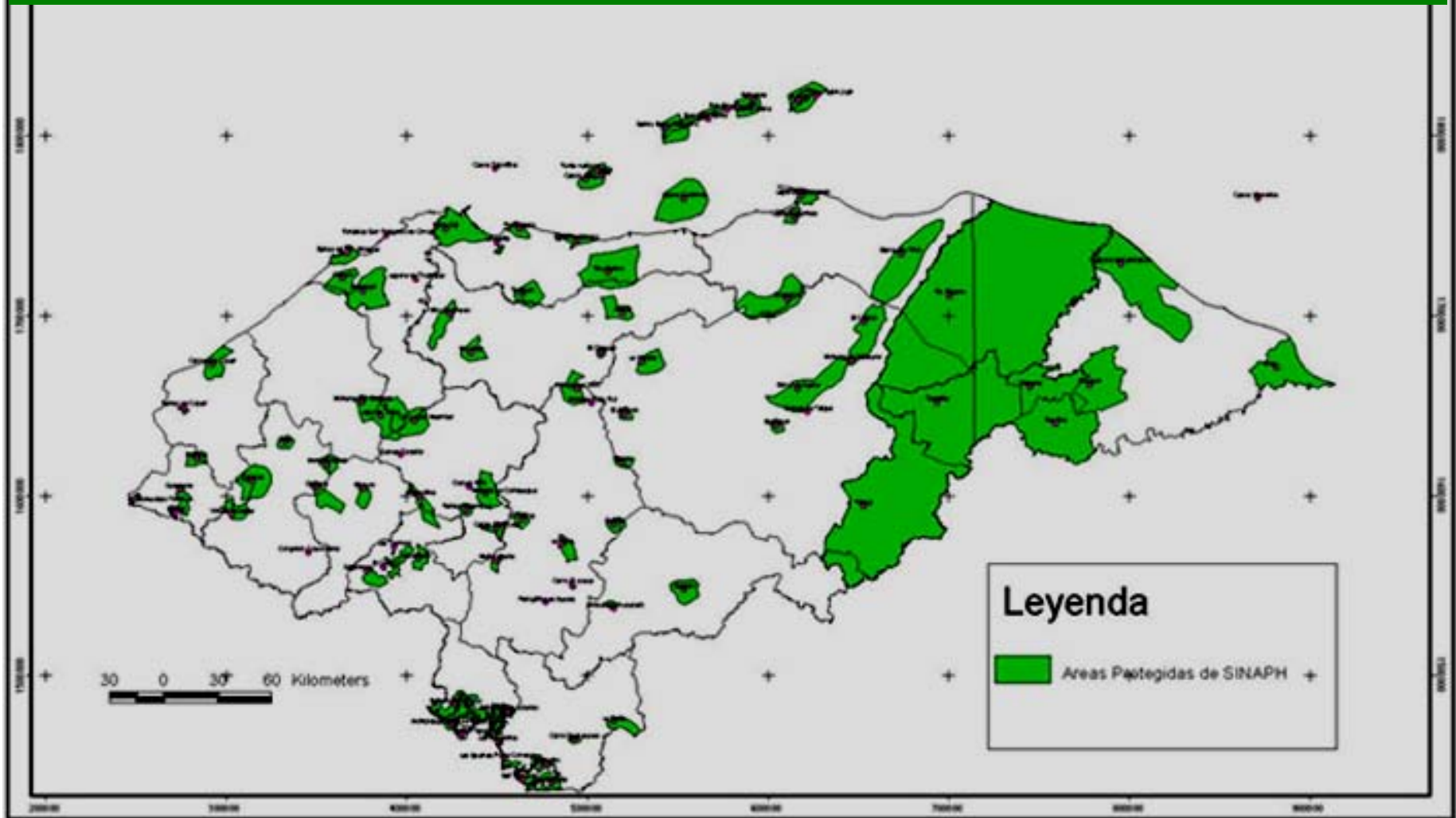
Forest 50%

Broadleaf 30%

Pine 20%

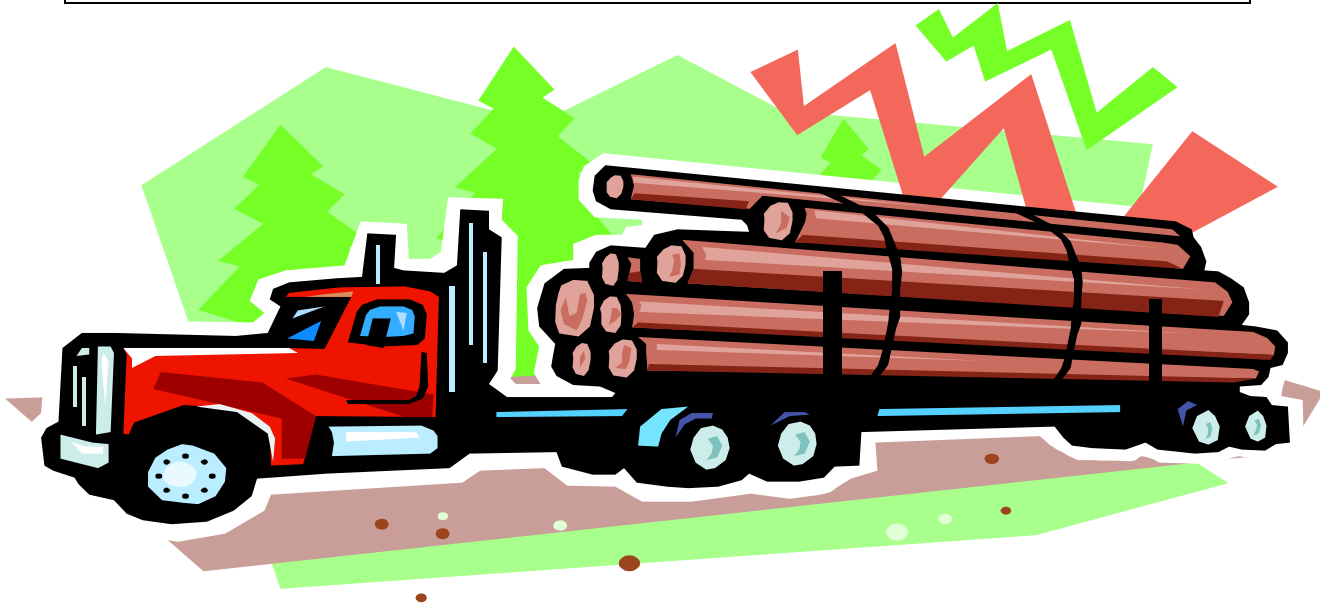
BROADLEAF FOREST

Mostly Protected Areas



Legal Commercial Logging

+97% PINE



10 Countries With the Highest Deforestation Rates in the World

1. Honduras: 37%

Between 1990-2005, Honduras saw a decline of 37% in its forest cover.

THIS IS NOT TRUE

Honduras Forest Area ?

(millions of hectareas)



<u>1964</u>	<u>7.8</u>	<u>7.0</u>
<u>1986</u>		<u>5.1</u>
<u>1990</u>	<u>7.4</u>	<u>8.1</u>
<u>1992</u>	<u>5.5</u>	<u>6.0</u>
<u>1995</u>		<u>6.0</u>
<u>2000</u>	<u>5.4</u>	<u>6.4</u>
<u>2005</u>	<u>4.6</u>	<u>5.8</u>
<u>2009</u>		<u>6.6</u>
<u>2010</u>		<u>5.2</u>

ILLEGAL-LOGGING.INFO

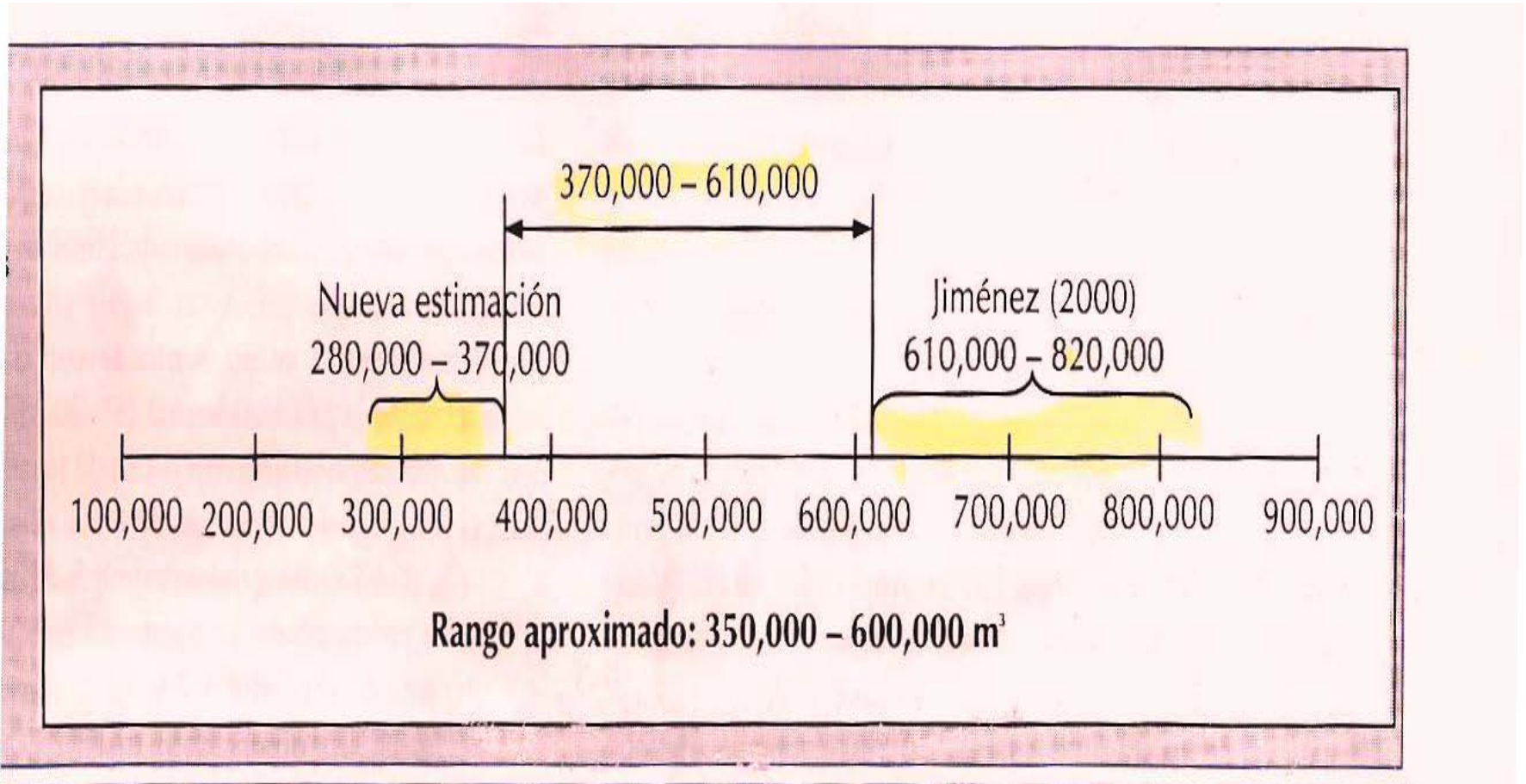
site maintained by [Chatham House](#)

**Illegal logging is also a
huge problem in Honduras.**

**Up to 85% of timber production is
believed to be illegal.**

Illegal Logging – Pine Forest

Filippo de Gatto Report



The Illegal Logging Crisis in Honduras

Environmental Investigation Agency

2005

“This suggests the main producers are exporting 50% more than they are reporting to the government.”

- **Highest Deforestation Rate in the World**
 - **Production 85% illegal**
 - **Half the exports are illegal**
- **Do you want to purchase wood products from Honduras?**

HONDURAS

**Just now learning about FLEGT and
the US Lacey Act**

**Certification looks like a good option
for the community managed forest
areas in the broadleaf forest**

A vibrant sunset scene over a body of water. The sky is a deep, rich red, transitioning to a darker purple at the top. Large, dark clouds are illuminated from below by the setting sun, creating a dramatic, fiery effect. The sun is visible as a bright yellow-orange glow on the horizon, just above a dark silhouette of land. The water in the foreground reflects the intense red and orange colors of the sky.

GRACIAS