



Federal Forest Office
Republic of Austria





Import of EUTR regulated goods from Eastern European countries to Austria

Jasmin Putz & Hannes Krehan
Federal Forest Office, Austria

Forest Trends Timber Regulation Enforcement Exchange
Vienna

16 09 2015

Consignments from Eastern Europe

29.260 consignments of products covered by the EUTR from 1 January 2014 to 23 August 2015 from

- Albania (AL)
- Bosnia and Herzegovina (BA)
- Belarus (BY)
- Kosovo (XK)
- Macedonia (MK)
- Moldova (MD)
- Montenegro (ME)
- Russia (RU)
- Serbia (RS)
- Turkey (R)
- Ukraine (UA)

Customs data

Information about

- Country of origin, country of dispatch and country of destination
- CN code
- Description of goods
- Consignee, shipper and declarant
- Net mass
- Invoice and customs value
- Customs office
- ...

Risk analysis

3 risk factors (each with 3 risk levels) are assessed:

1) Type of product

derived from the CN code in the Customs data

- non to partially processed products (rough or sawn wood, fuel wood): risk level 1
- semi-finished products (fibre board, OSB, paper, pulp): risk level 2
- fully-finished products (furniture, prefabricated buildings): risk level 3

Risk analysis

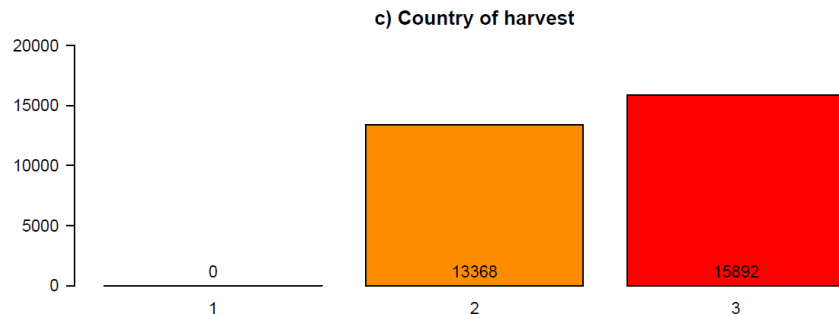
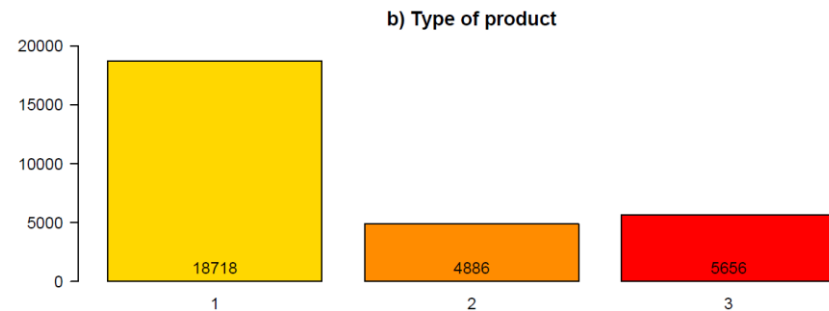
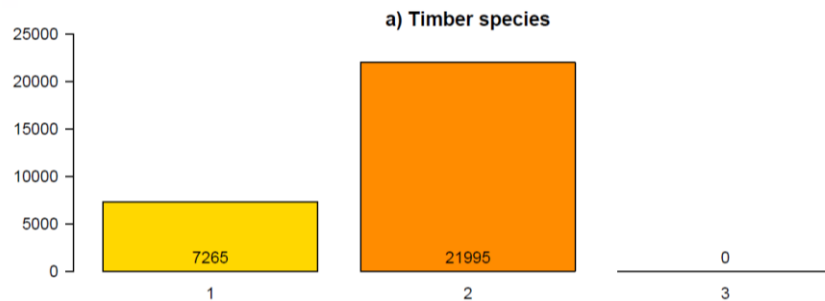
2) Country of harvest

assessed by the yearly updated Corruption Perceptions Index (CPI) of Transparency International:

- 70-100 points: risk level 1
- 40-69 points: risk level 2
- 0-39 points: risk level 3

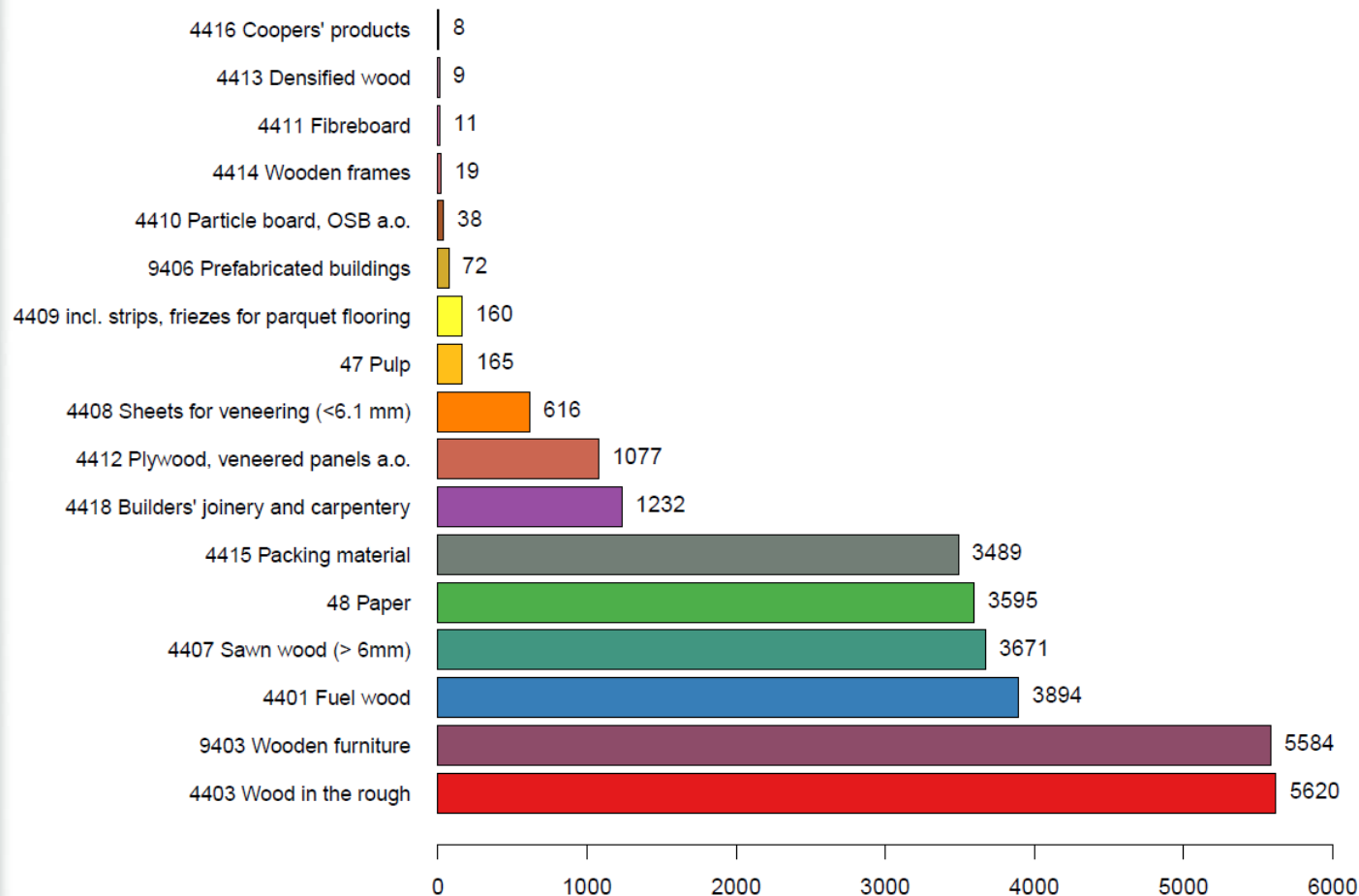
3) Tree species

- Coniferous timber: risk level 1
- Deciduous timber: risk level 2
- Tropical timber: risk level 3



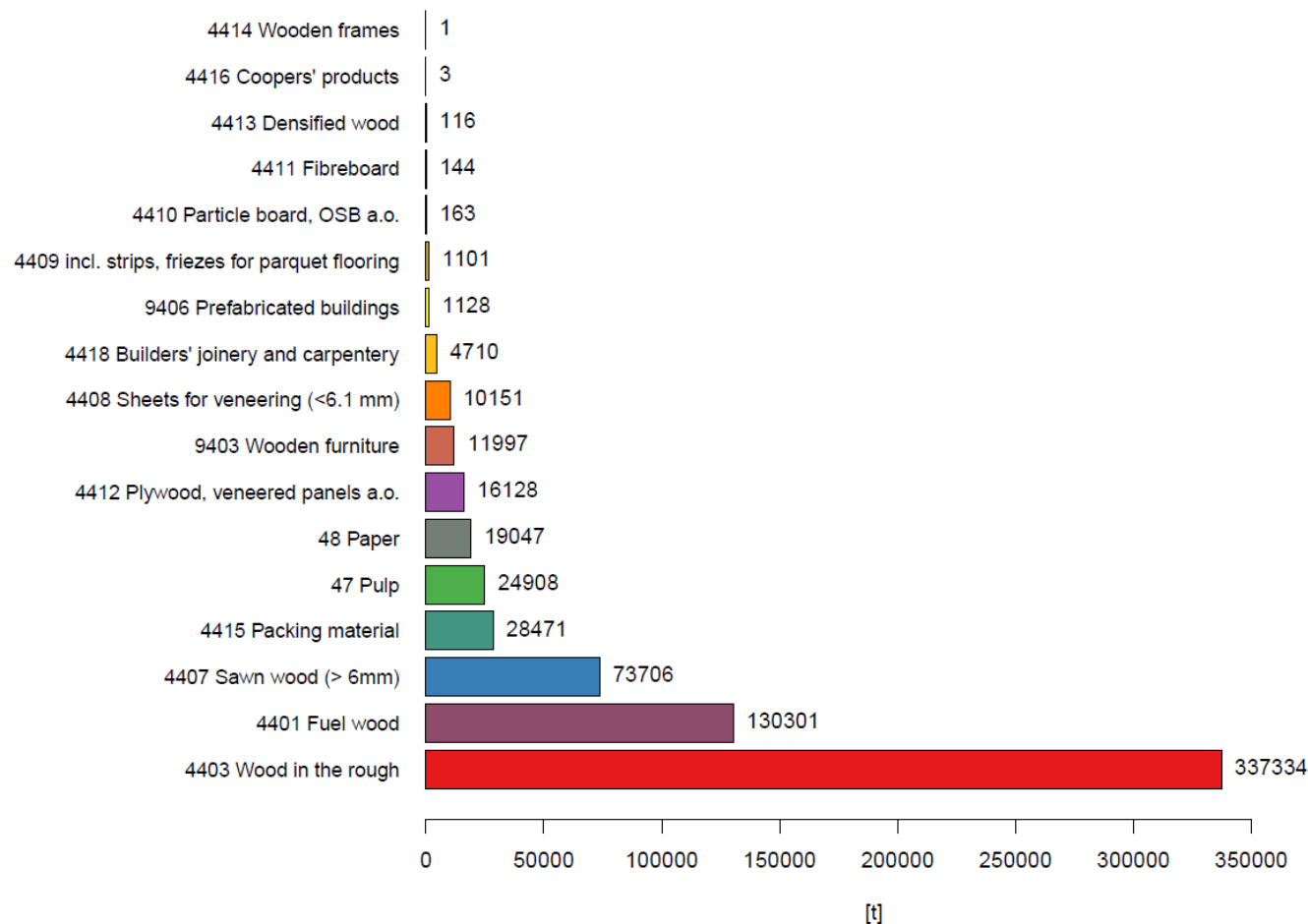
Number of Eastern European consignments according to risk factors in the period from 1 January 2014 to 23 August 2015.

Number of Eastern European consignments of regulated products according to CN-codes (1 January 2014 to 23 August 2015)

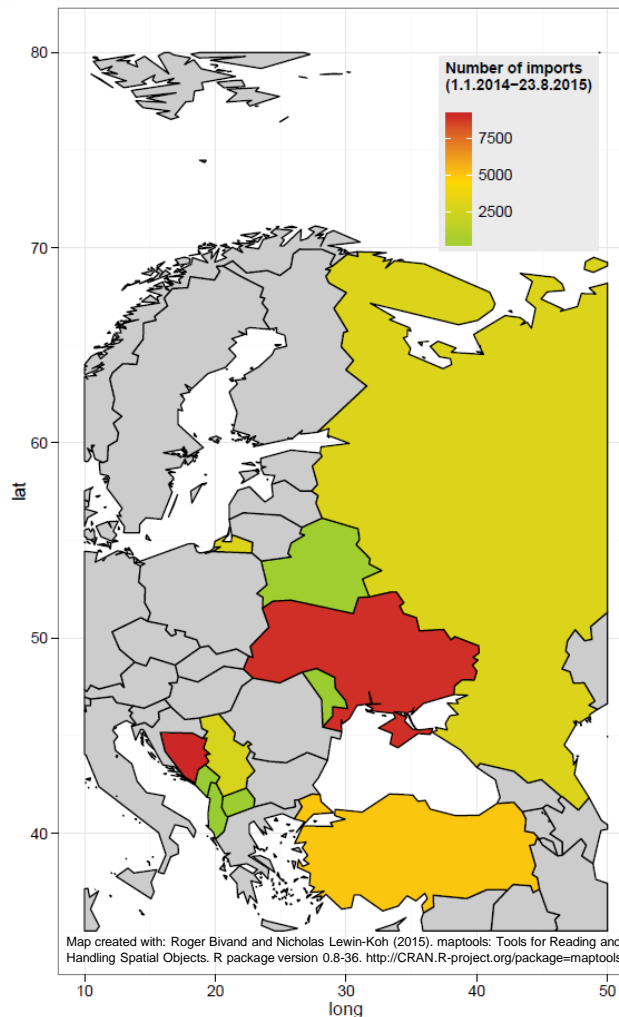


Number of
Eastern
European
consignments
according to
reduced CN
codes in the
period from 1
January 2014
to 23 August
2015.

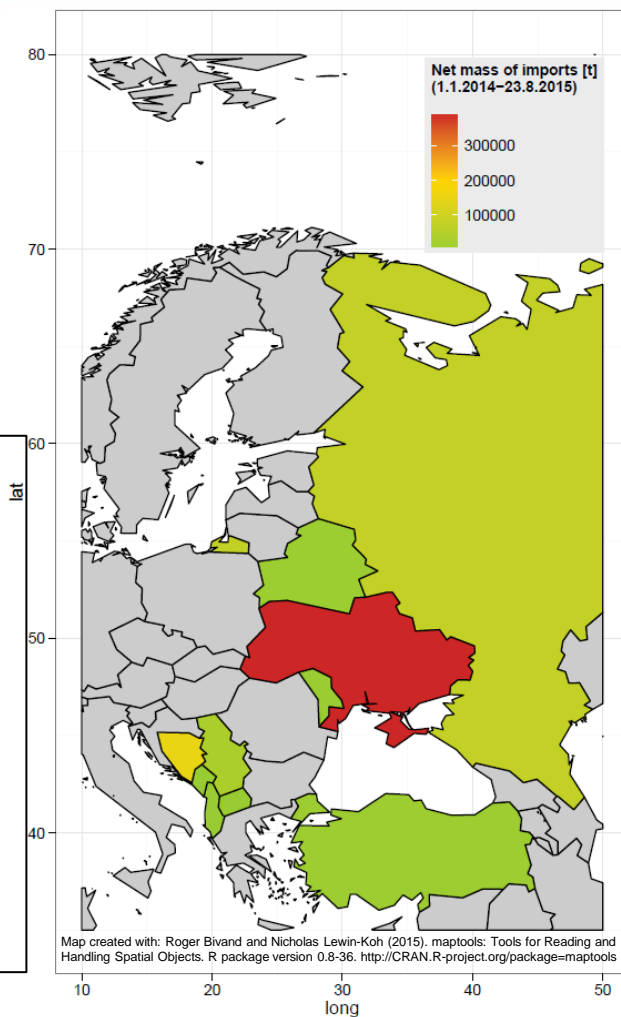
Net mass of Eastern European consignments of regulated products according to CN-codes (1 January 2014 to 23 August 2015)



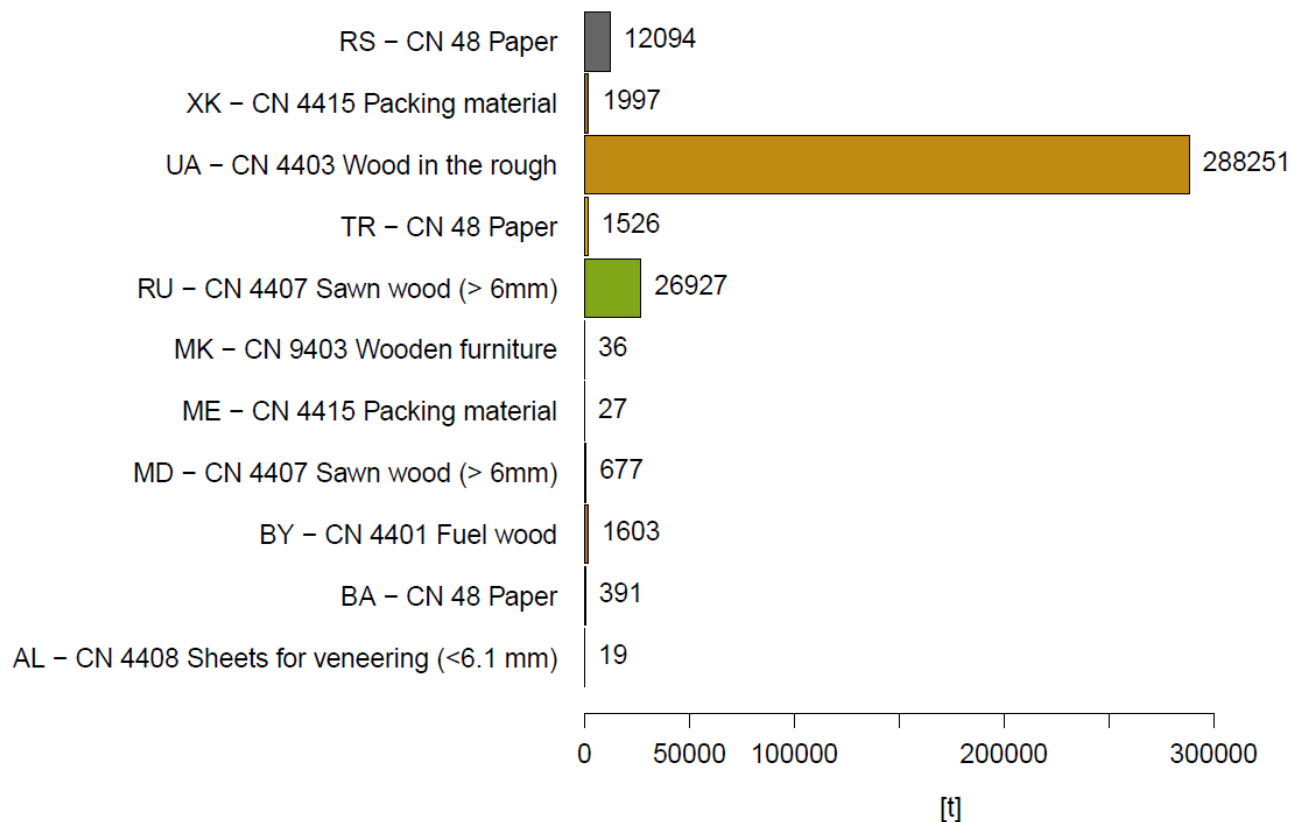
Net mass of
Eastern
European
consignments in
tons according to
reduced CN
codes in the
period from 1
January 2014 to
23 August 2015.

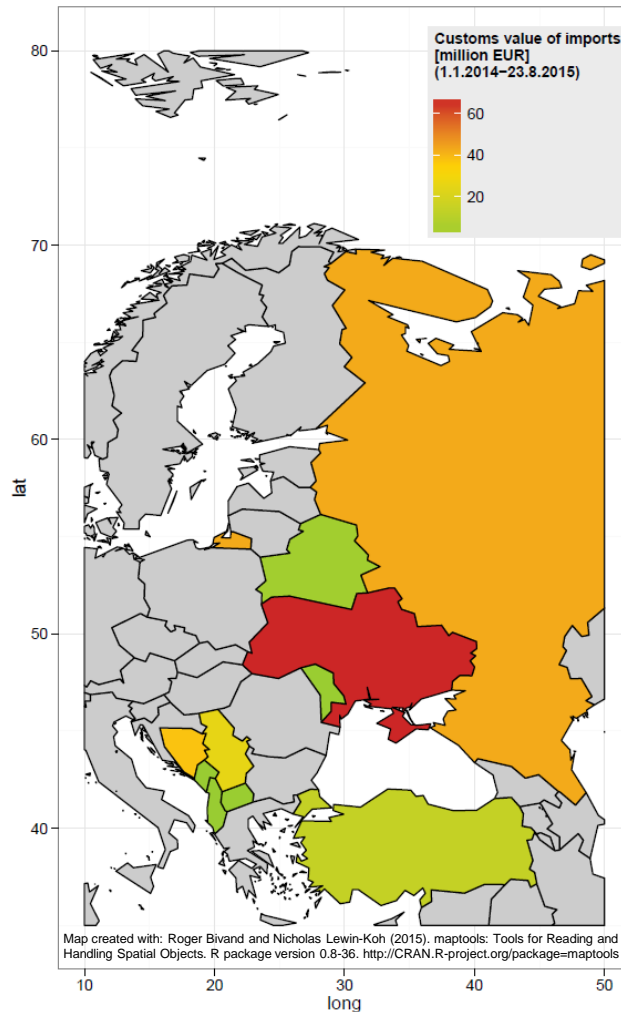


Number of consignments (left) and net mass of imported products in tons (right) from Eastern European countries in the period from 1 January 2014 to 23 August 2015.



**Net mass of eastern European imports
according to the CN code
with the highest import weight by country
(1 January 2014 to 23 August 2015)**

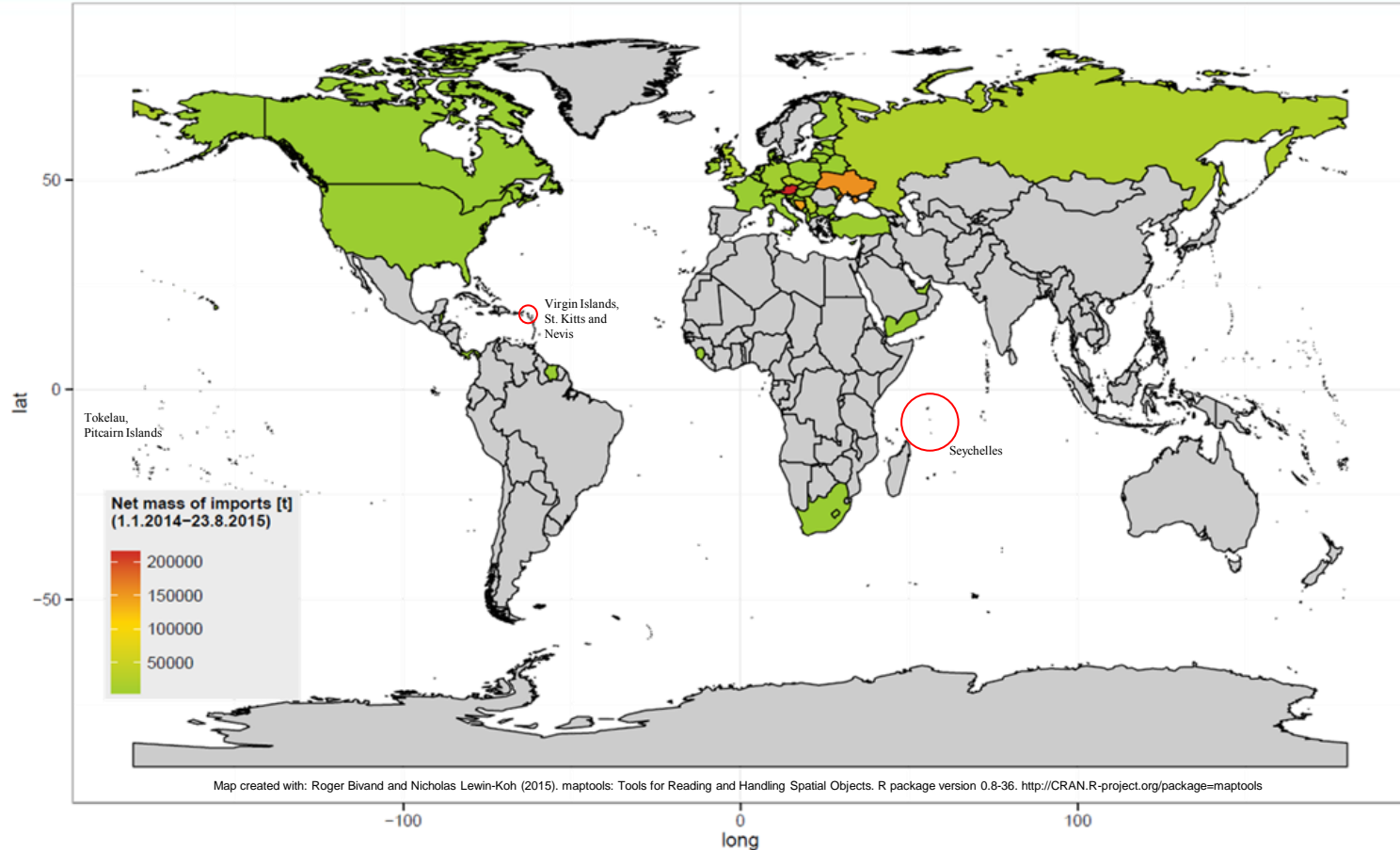




Customs value of imported products expressed in EUR millions from Eastern European countries in the period from 1 January 2014 to 23 August 2015.

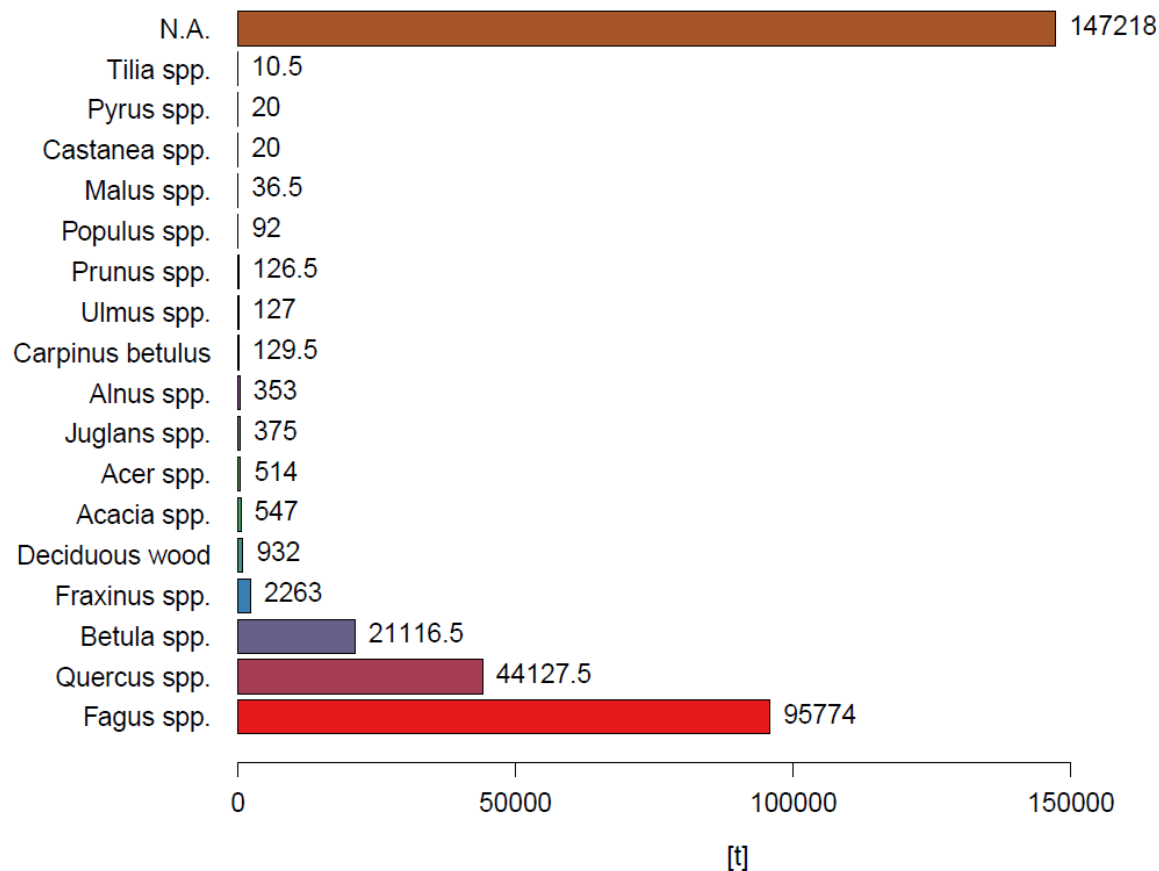
Shippers' data, country of origin and country of dispatch

- The office of the shipper must not necessarily be in the same country that's given as the country of origin or dispatch
- In the Customs data there's a distinction between the country of origin, the country of dispatch and the country of the shippers office

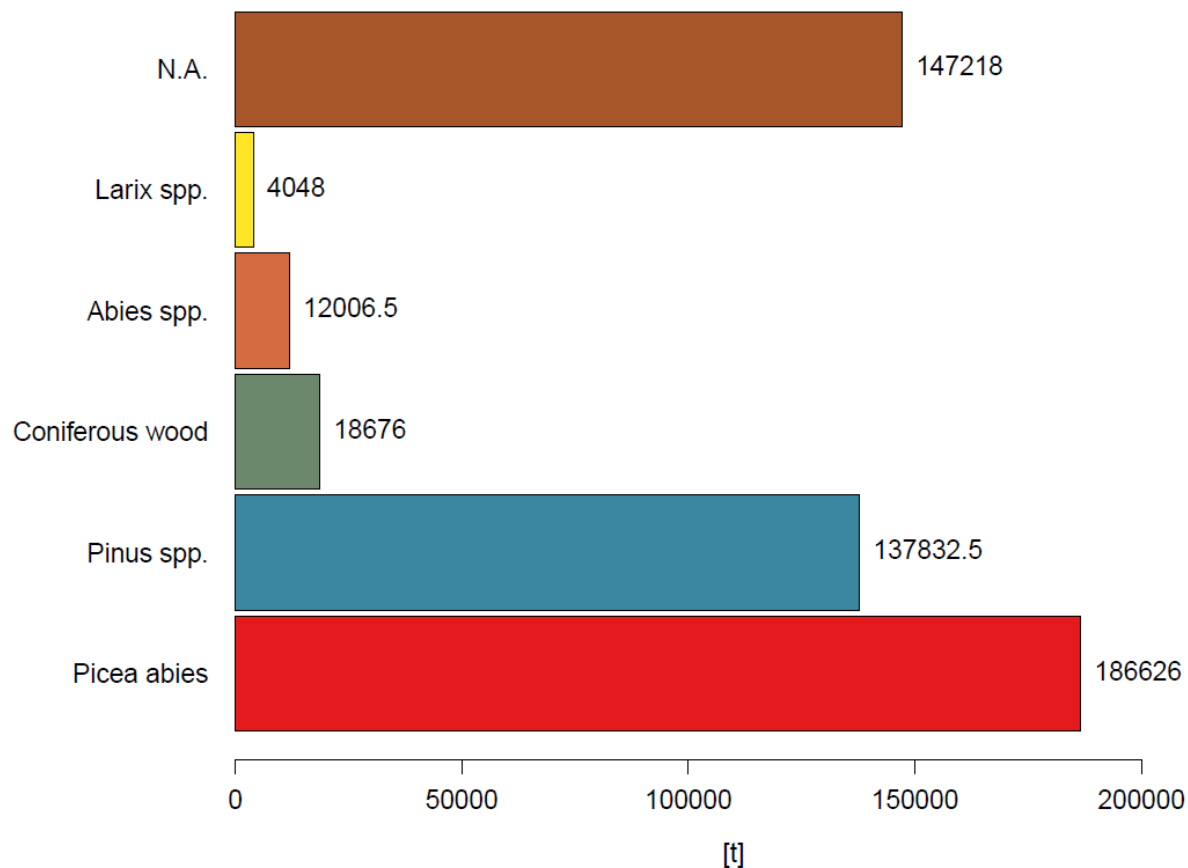


Net mass of Eastern European consignments according to the country of the shippers office in the period from 1 January 2014 to 23 August 2015. n=49

Net mass of eastern European imports of deciduous species (1 January 2014 to 23 August 2015)



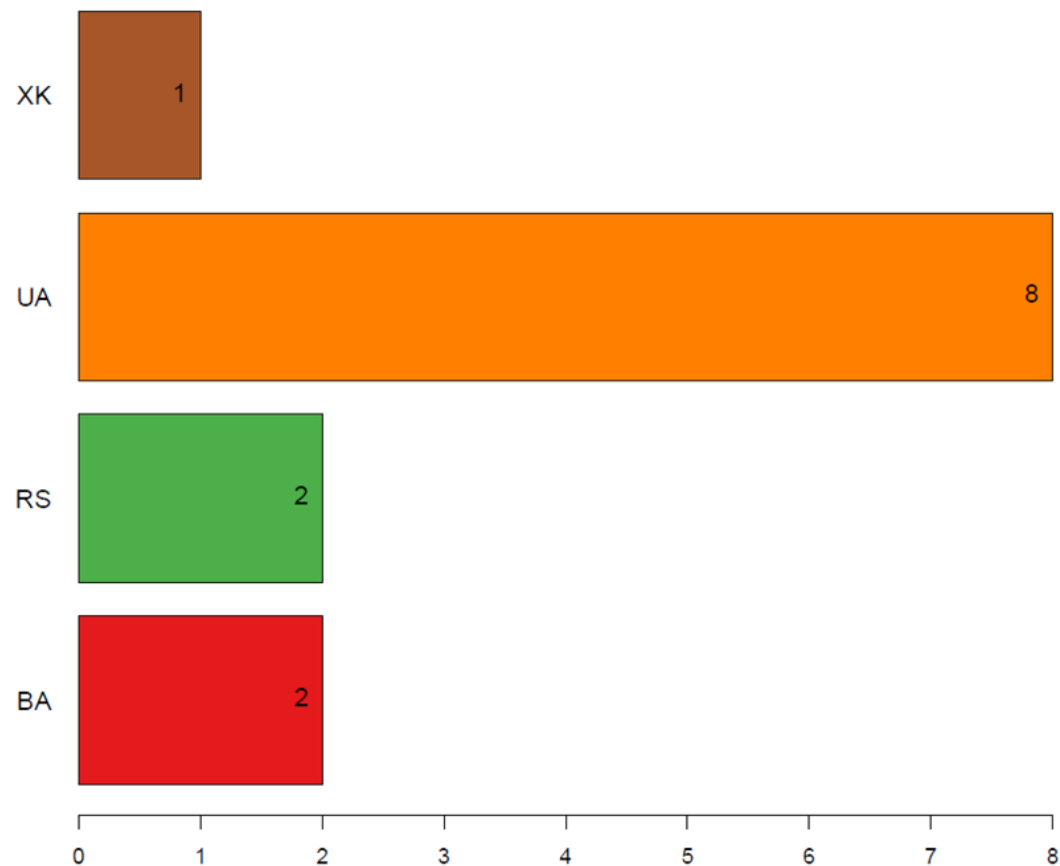
**Net mass of eastern European imports
of coniferous species
(1 January 2014 to 23 August 2015)**



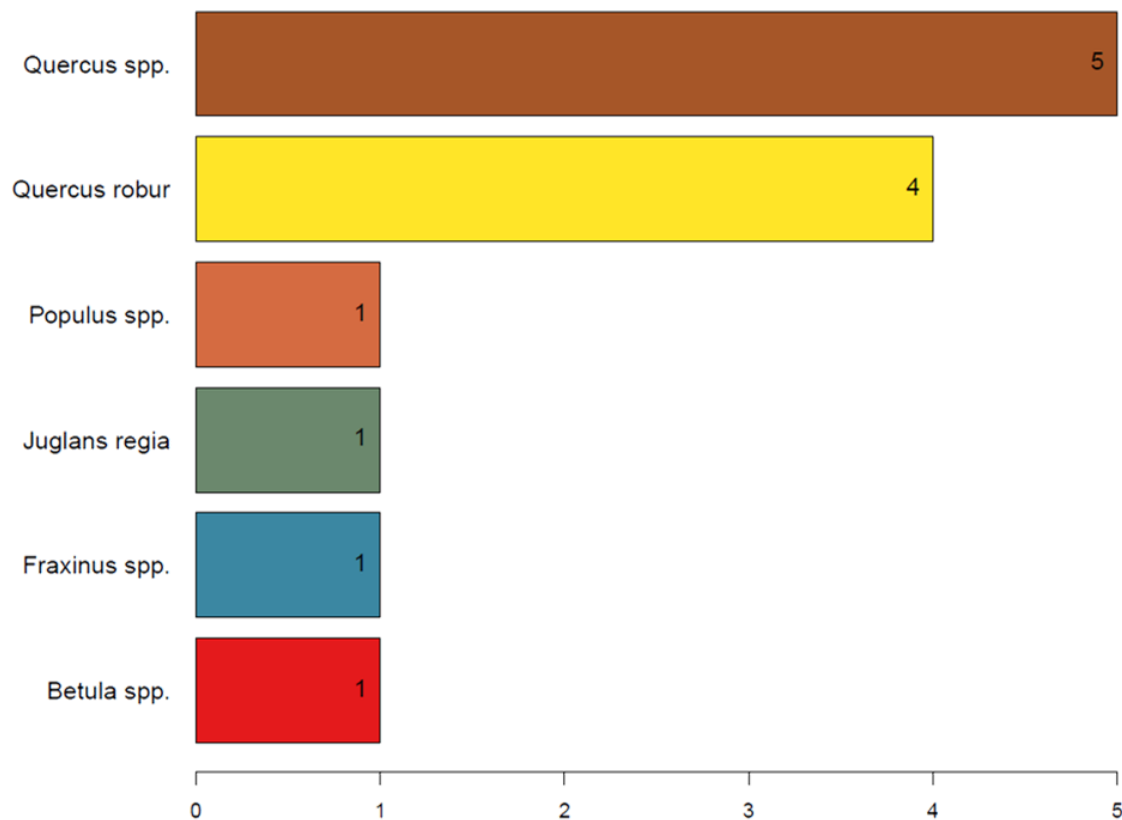
Controlled consignments

- Period: January to July 2015
- 10 consignments from Eastern Europe separated into 13 different types of goods (by taking the timber species into consideration)
- Imported by 5 operators

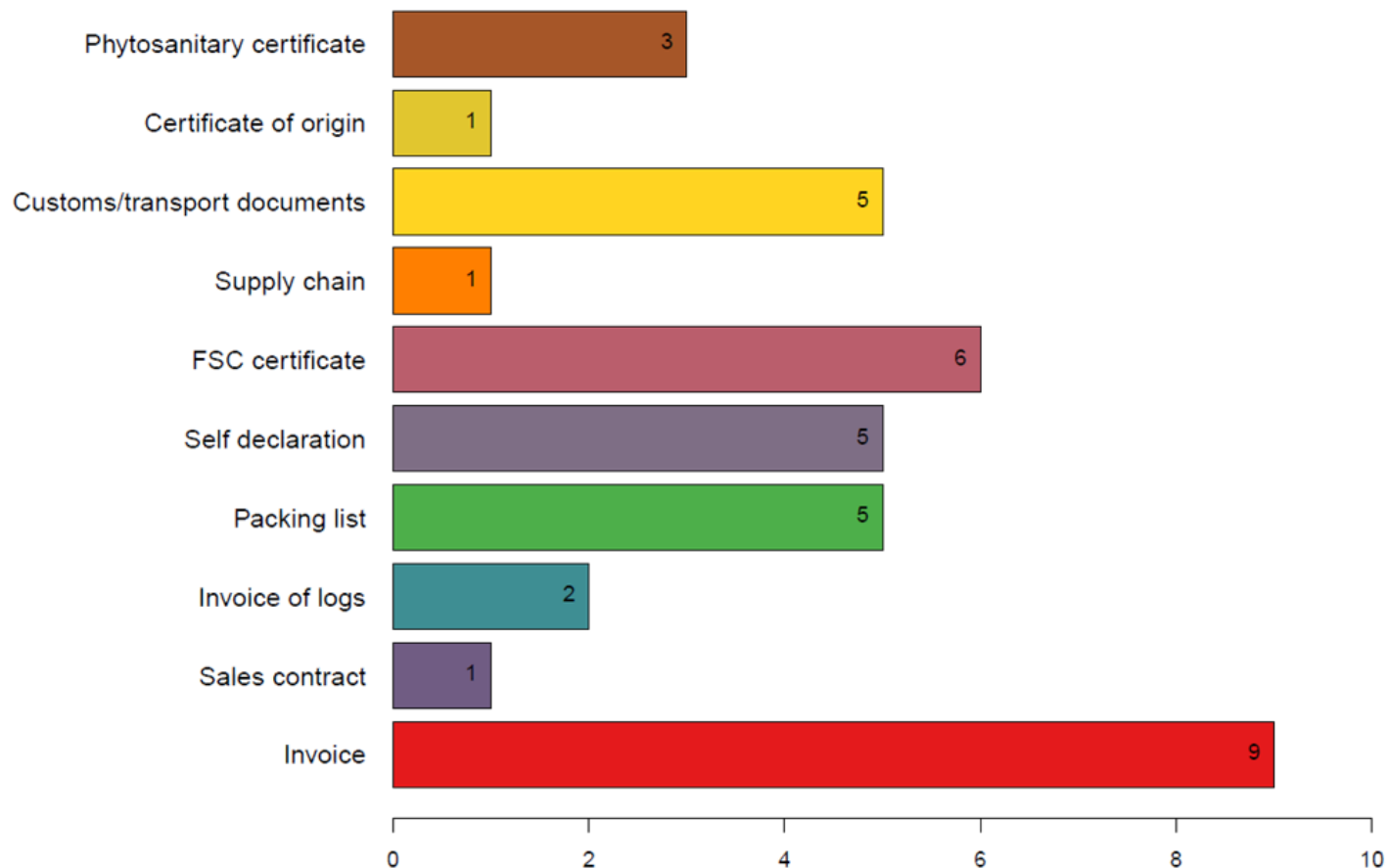
Country of harvest of checked imports (January to July 2015)
n=13



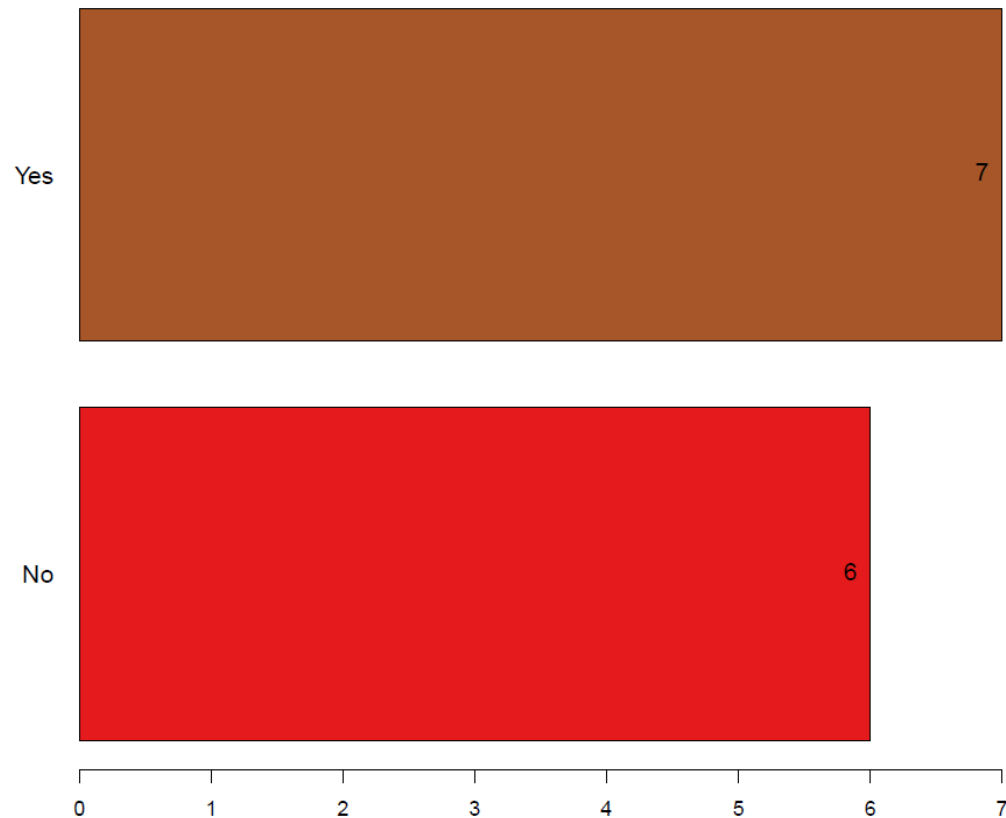
Timber species of checked imports (January to July 2015)
n=13



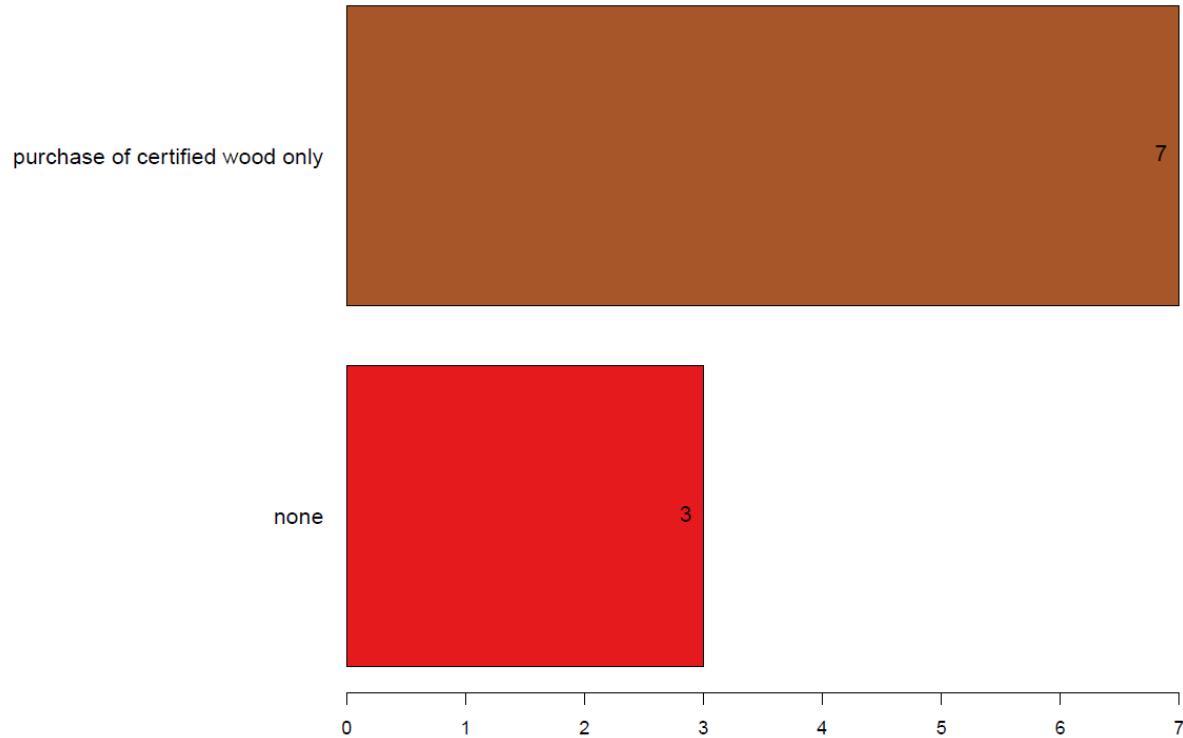
Documents provided by operators (January to July 2015)
n=10



FSC certification of checked imports (January to July 2015)
n=13



Binding recommendations for checked operators (January to July 2015)
n=10





**Thank you for your
attention!**

jasmin.putz@bfw.ac.at
hannes.krehan@bfw.ac.at

ISO codes

ISO code	Country
AL	Albania
BA	Bosnia and Hercegowina
BY	Belarus
MD	Moldova
ME	Montenegro
MK	Macedonia
RS	Serbia
RU	Russia
TR	Turkey
UA	Ukraine
XK	Kosovo