

Offsets and Conservation Trust Funds

The Mozambican Context

Enabling Preconditions

Where:

1. The Protected Area Network covers all (or most) types of biodiversity in a country

AND

2. That network suffers from significant financial constraints to effective biodiversity protection

Enabling Preconditions

Then:

The Protected Area Network can potentially serve as a pre-determined offset location.

Advantages:

1. Permanence: Already gazetted, so no need to set aside new areas (and faster)
2. Landscape Context: Serves as a coordinated, consolidated offset site, reducing fragmentation
3. Administrative framework already determined and in place

PA as the preferred Offset Locations

For Companies:

- Quicker
- Administratively clear
- Probably cheaper to achieve the same outcomes

For Governments:

- Ensure highest biodiversity priorities are met
- Contributes to sustainability of current international commitments
- Simplifies investor requirements

Mozambican Context

Legal Basis:

Environment Law, enshrines the principle of 'Responsibility, on the basis of which whoever pollutes or in any way degrades the environment shall always have the obligation to repair or compensate for the resulting damage'

Strategic Environmental Assessment for the Coastal Zone mandates that 'EIAs for the hydrocarbon sector must include a plan for biodiversity compensation in order to neutralize residual impacts

2014 Conservation Areas Law requires that in Protected areas, all projects must be no net loss



Mozambican Context

Practical Insertion – Environmental Impact Assessment (EIA)

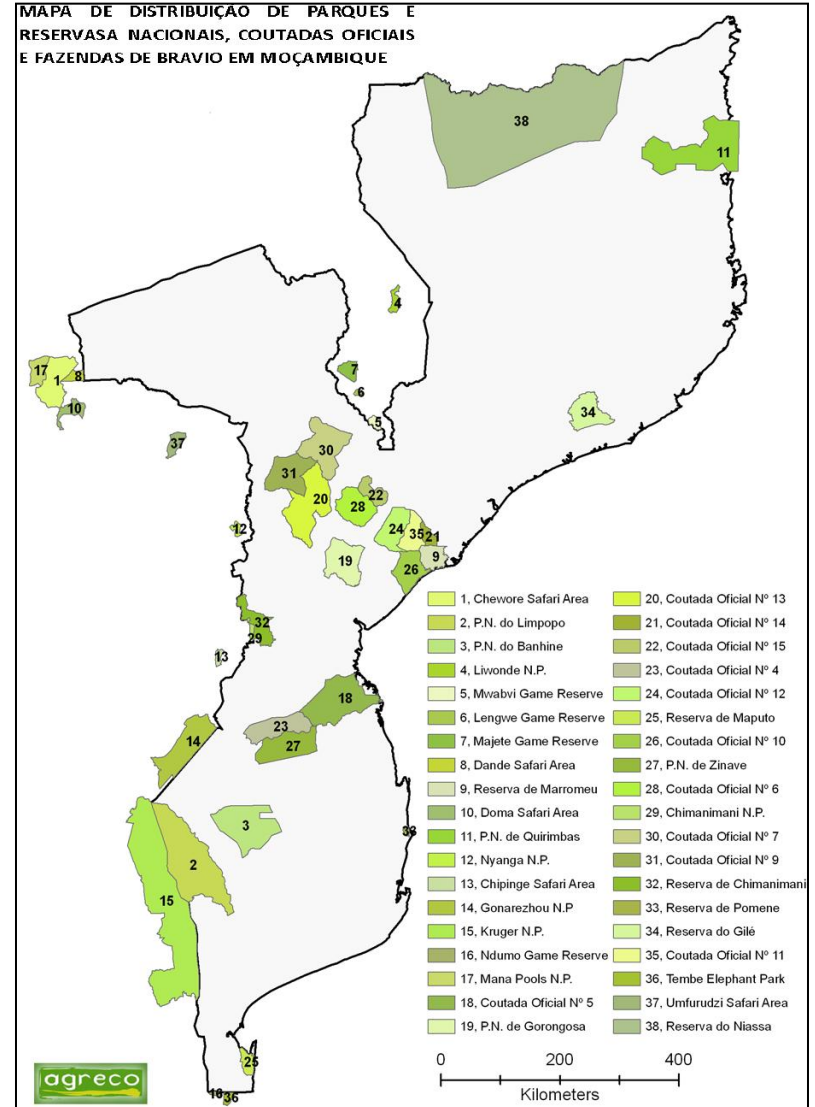
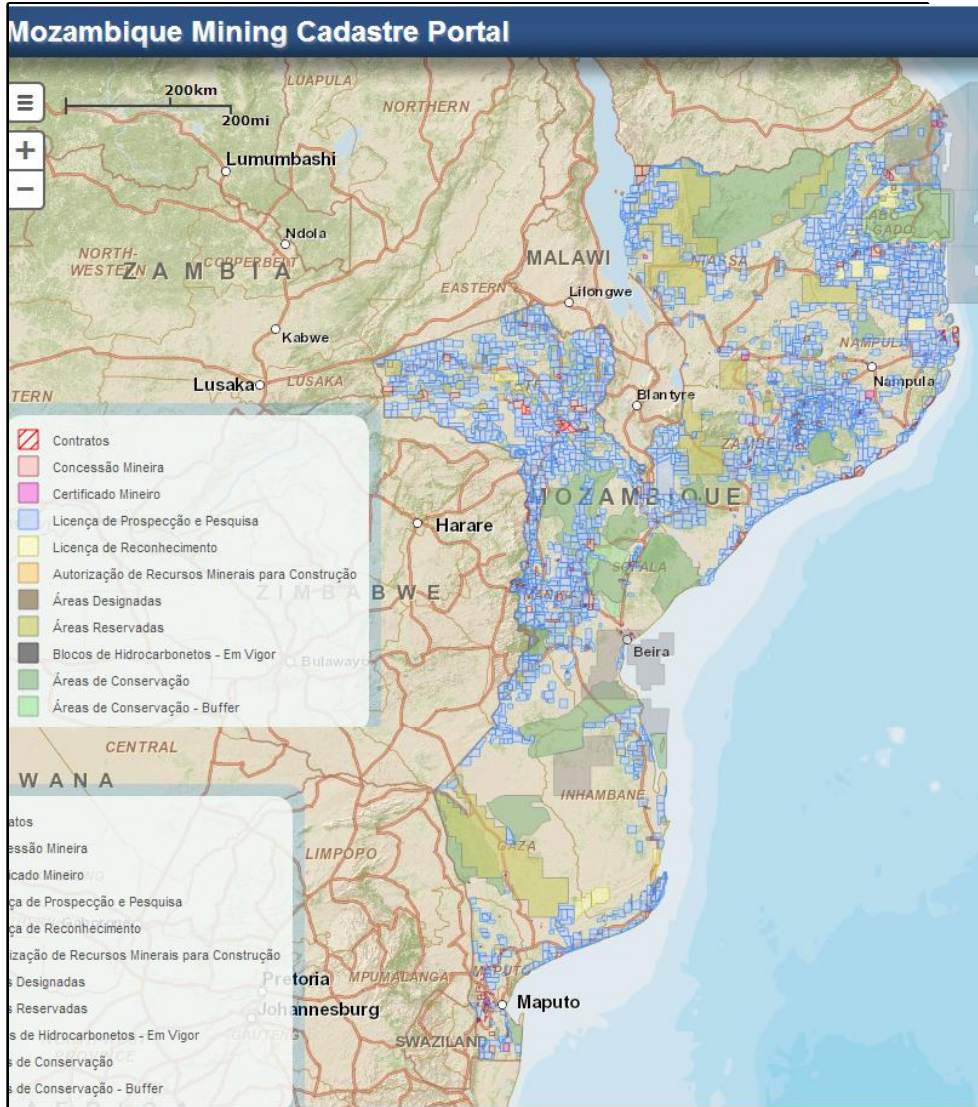
- EIA is Mandatory for all large projects

Reasonably Simple to Incorporate Offsets into current process

- The option is there for voluntary action
- And, If an offset is incorporated into the Environmental Management plan, is **legally binding** and thus enforceable under Mozambican law



Mozambican Reality



Mozambican Context

In these conditions, the role for Conservation Trust Funds is clear.

Their principle purpose is to channel funds to Protected Areas and monitor the impact of these funds

In many cases, already exist, so once again, more efficient to use them



Practical Applicability

Implementation Mechanism

Company endows

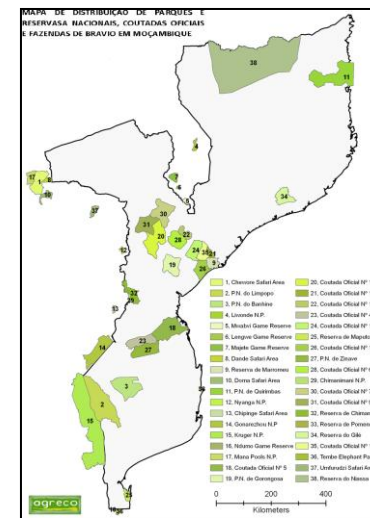
-> BIOFUND funds and monitors

-> Protected Areas deliver conservation



biofund

Fundação para a Conservação da Biodiversidade



(NB Very Rough Calculation)

If just **4-5% of Mozambique** is subject to an offsetting regime, we have enough money for all conservation areas in Mozambique, forever.

% of Country Transformed and Offset

25,000,000
20,000,000
15,000,000
10,000,000
5,000,000
-

1%

2%

3%

4%

USD Generated Per year

