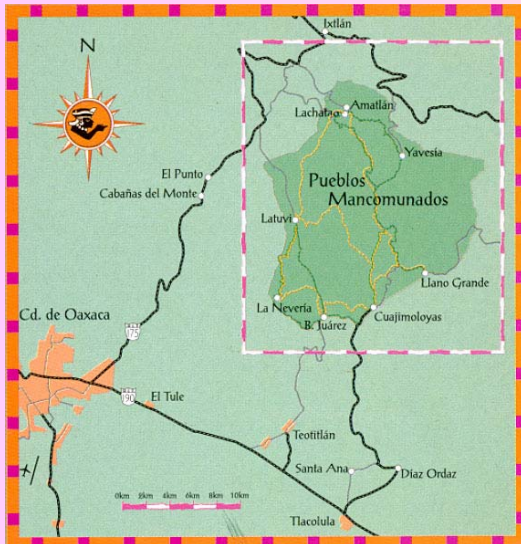


PUEBLOS MANCOMUNADOS



LACHATAO, AMATLAN, YAVESIA Y ANEXOS

WHO WE ARE:



**WE ARE EIGHT COMMUNITIES INTEGRATED
IN THE FOLLOWING WAY:**

THREE MUNICIPALITIES: SANTA MARIA
YAVESIA, SANTA CATARINA LACHATAO
AND SAN MIGUEL AMATLAN.

THREE MUNICIPAL AGENCIES: LATUVI,
BENITO JUAREZ, CUAJIMOLOYAS.

TWO POLICE AGENCIES :
LLANO GRANDE AND LA NEVERIA.



WE ARE LOCATED 60 KMS. FROM THE CAPITAL OF THE STATE OF OAXACA.

TO THE NORTHEAST OF THE CITY OF OAXACA, IN THE SIERRA DE JUAREZ.

**WE BELONG TO THE ZAPOTEC ETHNIC GROUP, WE
CONSERVE CUSTOMS OF OUR ANCESTORS.**

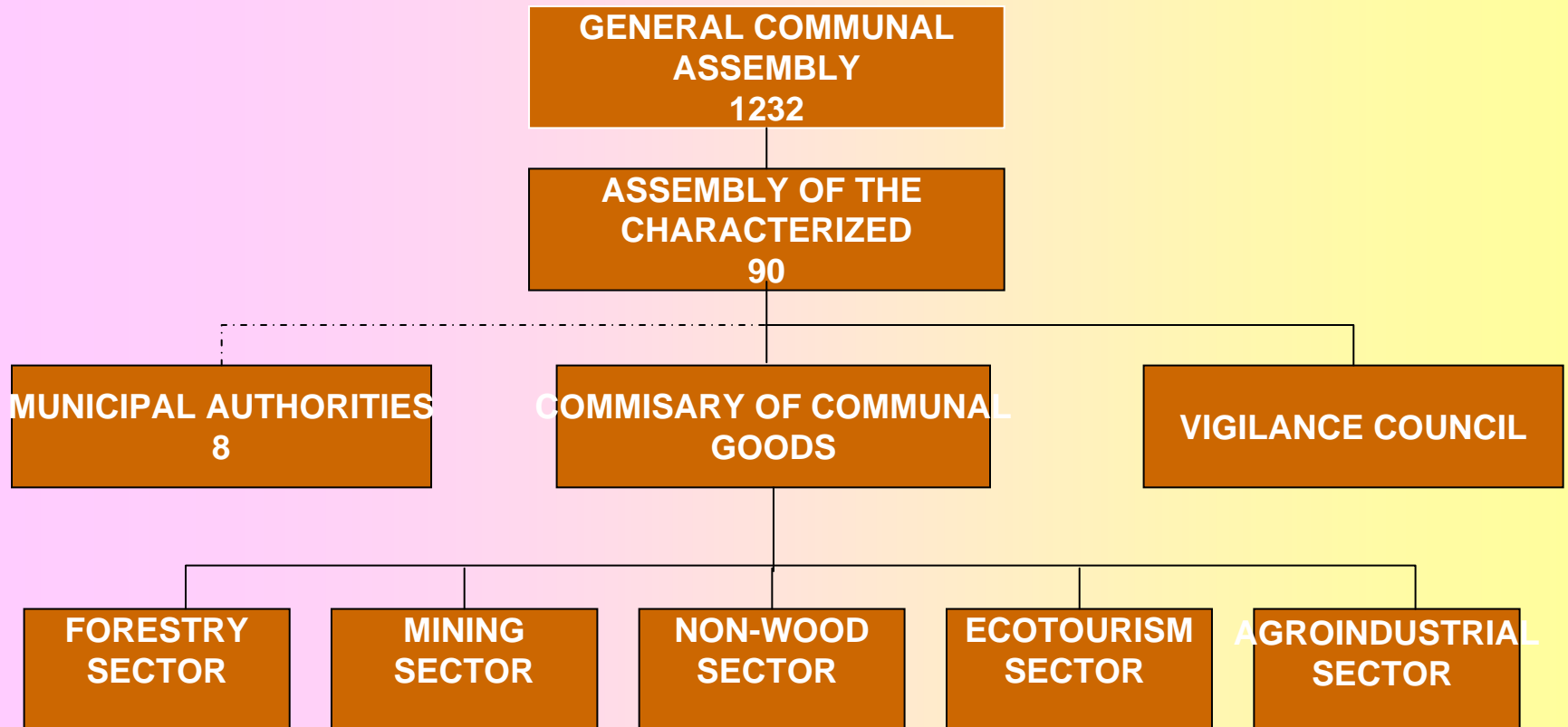
WE CONSERVE OUR VALUES:

**HONESTY, WORK, RESPECT (OF HUMAN LIFE, OF FAMILY, OF NATURE),
THE PRINCIPLE OF AUTHORITY, THE PRACTICE OF “TEQUIO” (JOBS
FOR COLLECTIVE BENEFIT), GUELGUETZA, OUR LOVE FOR EDUCATION.**

**WE COMPRISE AN AREA OF 29,430-86-08
HECTARES OF COMMUNAL LAND WHICH IS
BACKED BY THE PRESIDENTIAL
RESOLUTION OF SEPTEMBER 19, 1961.**



OUR ORGANIZATION:



OBJECTIVE:
SUSTAINABLE
USAGE
OF FOREST
RESOURCES



MINING SECTOR: METALS



**EXPLOITATION
OF GOLD AND
SILVER MINES**

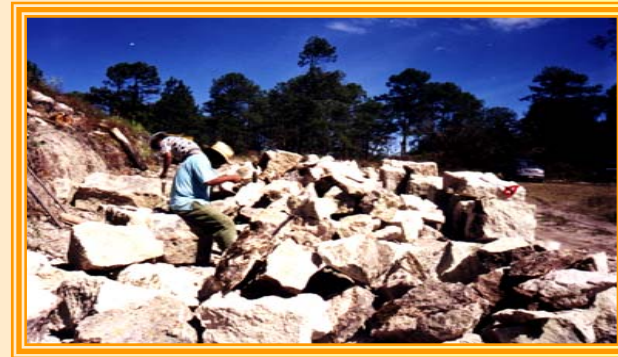
MINING SECTOR: NON-METALS



STONE ADDITIONS



QUARRY BANK



NON-WOOD SECTOR:

WATER BOTTLING COMPANY

**MAKING USE OF SPRINGS
LOCATED IN THE FORESTS OF
OUR TOWNS.**



**OBJECTIVE: GENERATE
EMPLOYMENT FOR WOMEN OF
THE COMMUNITIES.**



NON-WOOD SECTOR:

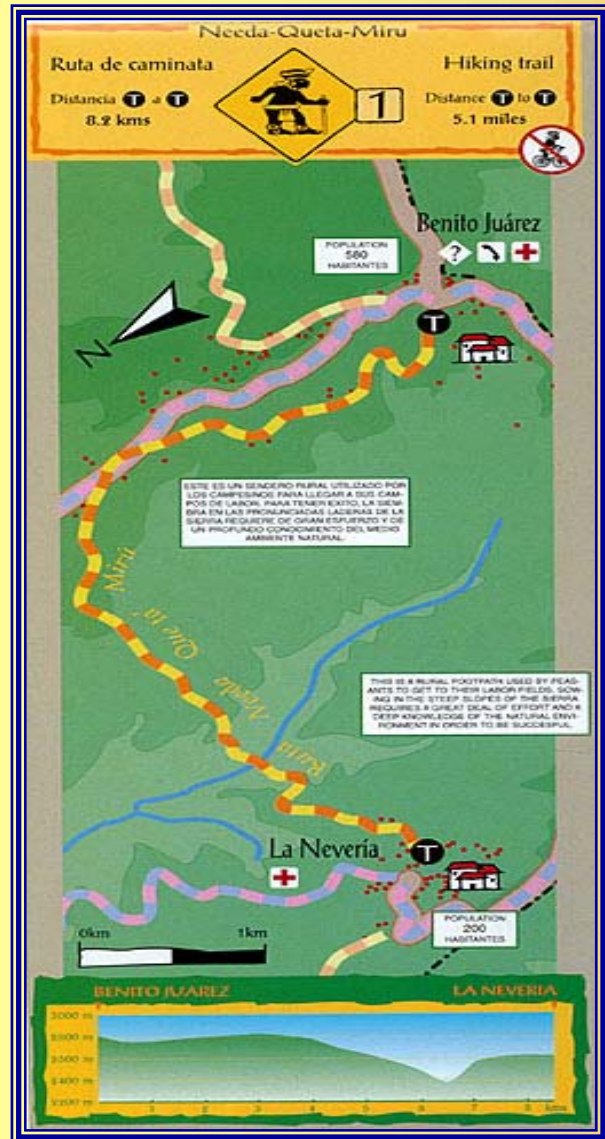
**DRYING OF MUSHROOMS,
PINEAPPLES, MANGOS,
BANANAS, APPLES, PEARS.**



**OBJECTIVE: GENERATE
EMPLOYMENT FOR WOMEN.**



SECTOR: ECOTOURISM



NATURE TRAILS AND CABINS

ECOTOURISM SECTOR



CAMPING AND CYCLING

CABINS



SECTOR: ECOTOURISM



NATURE TRAILS



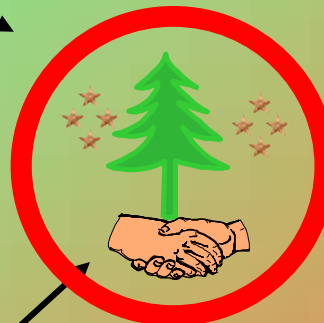
OUR COMPANIES



COMMUNAL



BOTTLING



ECOTOURISM



BACKGROUND:

AT THE LENGTH OF THE HISTORY OF JOINED TOWNS, WE HAVE DEDICATED OURSELVES TO CARRY OUT BUSINESS ACTIVITIES MOSTLY EMPHASIZING THE FOREST AREA.

IN THE EARLY 70'S A NEW PHASE WAS MARKED WITH THE END OF CONCESSIONING FORESTS TO PRIVATE COMPANIES. THE COMMUNITY ORGANIZED ITSELF AND WITH THE EXPERIENCE ACQUIRED OVER MORE THAN 10 YEARS, THE FIRST FOREST COMPANY WAS INITIATED.

FROM THEN ON WE HAVE BEEN DEDICATED TO WORKING IN AND ADMINISTERING OUR COMPANIES WITH DILIGENCE AND HONESTY, WITH HIGH MORAL SOLVENCY AND SERIOUSNESS IN OUR COMMITMENTS, WHICH HAS RESULTED IN A PERMANENT MARKET FOR EACH OF THEM.

FORESTRY ENTERPRISE

FORESTRY SECTOR

BEGINS OPERATING IN 1976

General Objective:

Making use of the forest resources of the community, through studies and programs that ensure sustainability of the same, compliance with ecological norms and rules, as well as the just application of economic benefits generated to benefit the communities.

FOREST ENTERPRISE

Specific objectives:

Through the use of forests generate employment and economic resources as a means to support the socioeconomic development of communities.

Conserve natural resources, particularly ground and water with the purpose of maintaining ecological balance and the permanence of the forest wood resource and its resources associated with flora and fauna.



FOREST ENTERPRISE



WE COUNT ON FOREST
MANAGEMENT PROGRAMS,
WHICH HAVE SERVED AS A
BASE FOR THE USE OF OUR
FORESTS.

**DESPITE THE FACT THAT THE COMMUNITY PARTICIPATES IN THE MAKING OF
THE STUDY ON FOREST MANAGEMENT, THE COMMUNITY MEMBERS ONLY USE
50% OF THE AUTHORIZED VOLUME.**

FOREST ENTERPRISE



THE COMBATTING OF
PLAGUES, REFORESTATION
AND COMPLIMENTARY
TREATMENTS OF THE
FOREST ARE PRIORITIES OF
THE COMMUNITY MEMBERS.

FOREST ENTERPRISE

**IN 1998 A COMPLETELY
MECHANIZED SAWMILL WAS
INSTALLED WITH THE PURPOSE
TO LOWER COSTS AND RESPOND
TO MARKET DEMANDS.**

FOREST ENTERPRISE

**IN 1999 WOOD DRYERS WERE
INSTALLED, WITH THE PURPOSE
OF IMPROVING THE QUALITY OF
THE DRYING OF THE WOOD AND
TO COMPETE WITH PRODUCTS
FROM OTHER COUNTRIES.**

FOREST ENTERPRISE

MARKET:

CURRENTLY 70% OF
OUR PRODUCTION IS
SOLD IN MEXICO
AND 30% IN THE
UNITED STATES AND
EUROPE.

MINING ENTERPRISE

WITH THE EXPERIENCE
OBTAINED WITH THE
FORESTRY UNIT, IN
FEBRUARY OF 1988 THE
MINING UNIT WAS INITIATED,
WITH THE PURPOSE OF
EXPLORING AND EXPLOITING
MINING STATES EXISTING IN
OUR COMMUNITIES.

MINING ENTERPRISE

BECAUSE OF THE MANY PROBLEMS THAT THE MINING SECTOR FACES WE FELT OBLIGATED TO SUSPEND OUR ACTIVITIES WHILE METAL PRICES IN INTERNATIONAL MARKETS RECOVER, CURRENTLY WE ARE RESUMING ACTIVITIES.

BOTTLER AND PACKER OF JOINT COMMUNITIES

**GIVE VALUE TO OUR WORK,
CONSUMING OUR PRODUCTS**

MISSION

ALTERNATIVE SOURCE FOR USE THAN THAT OF FOREST ENTERPRISE, GENERATING EMPLOYMENT AND DEVELOPMENT FOR WOMEN OF THE JOINT COMMUNITY.

BOTTLER AND PACKER JOINT COMMUNITIES



**BEGAN OPERATION IN MAY OF
1997**

**69 JOBS HAVE BEEN CREATED
DIRECTLY AND 150 INDIRECTLY**

**2000 DEMIJOHNS ARE PRODUCED
DAILY FOR CONSUMPTION (4% OF
THE MARKET IN THE CITY OF
OAXACA)**

BOTTLER AND PACKER JOINT COMMUNITIES



IT WORKS FOR THE
IMPLEMENTATION OF THE
HACCP SYSTEM AS A
GUARANTEE OF THE
QUALITY OF THE PRODUCT

A SECOND BOTTLING
PLANT OF WATER IN
DEMIJOHNS WAS SET UP
IN THE CITY OF OAXACA
TO MAKE OPERATIONS
MORE EFFICIENT AND
DECREASE COSTS

BOTTLER AND PACKER JOINT COMMUNITIES

**DRYING OF FRUITS,
MUSHROOMS, AND
AROMATIC HERBS**

**OBJECTIVE:
COMMERCIALIZATION
ALTERNATIVE OF FRUITS
FOR THE PRODUCERS AND
USE OF WILD MUSHROOMS
AND AROMATIC HERBS FROM
THE REGION.**

BOTTLER AND PACKER JOINT COMMUNITIES

**DRYING PROJECT BEGINS
OPERATION IN 2001**

**CREATED 30 JOBS
DIRECTLY AND 200 JOBS
INDIRECTLY FOR FAMILIES
WHO COLLECT
MUSHROOMS AND
PRODUCERS OF FRUIT IN
JOINT COMMUNITIES.**



MUSHROOM COLLECTOR



POTATO FARMER

BOTTLER AND PACKER JOINT COMMUNITIES

VARIETY OF DRIED PRODUCTS



FRESH MUSHROOM



DRIED MUSHROOM

VARIETY OF DRIED PRODUCTS

AROMATIC HERBS
PENNYROYAL
PERICON



FRESH PENNYROYAL



DRIED PENNYROYAL

VARIETY OF DRIED PRODUCTS



FRUITS
MANGO
PINEAPPLE
APPLE
PEAR
BANANA
TOMATO

MARKETS:

CONVENTIONAL PRODUCTS

MEXICO, US, ISRAEL, UK

**20 TONS/YEAR (MANGO,
PINEAPPLE)**

ORGANIC PRODUCTS

**US, FRANCE, ENGLAND,
ITALY, GERMANY**

**10 TONS/YEAR (MANGO,
PINEAPPLE)**

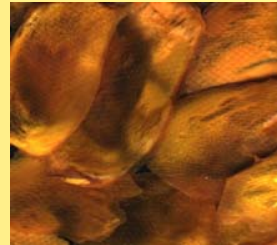
YIELD:

**1 TON OF DRIED MUSHROOM = 10 TONS
OF FRESH MUSHROOM**



YIELD:

1 TON OF DRIED FRUIT = 16 TONS FRESH



CERTIFICATIONS:

KOSHER PAREVE (ISRAEL) OUR PLANT IS ALREADY CERTIFIED

**ORGANIC FOR US, EUROPE (NATURLAND, CERTIMEX, OCIA,
BIOAGRICOOOP)**

FAIR TRADE (GIVES VALUE TO PRODUCER BENEFITS)

The economic well-being of communities and conservation of natural resources are closely related: one is not possible without the other.