

Scaling Up Sustainable Commodity Supply Chains



José Lopez
Executive Vice President,
Operations & GLOBE

Katoomba XIX
Foz do Iguaçu, Brasil'

March 19th 2014

Nestlé in Brazil

First factory 1921

500 Production Lines in 27 Brazilian Cities (8 states)

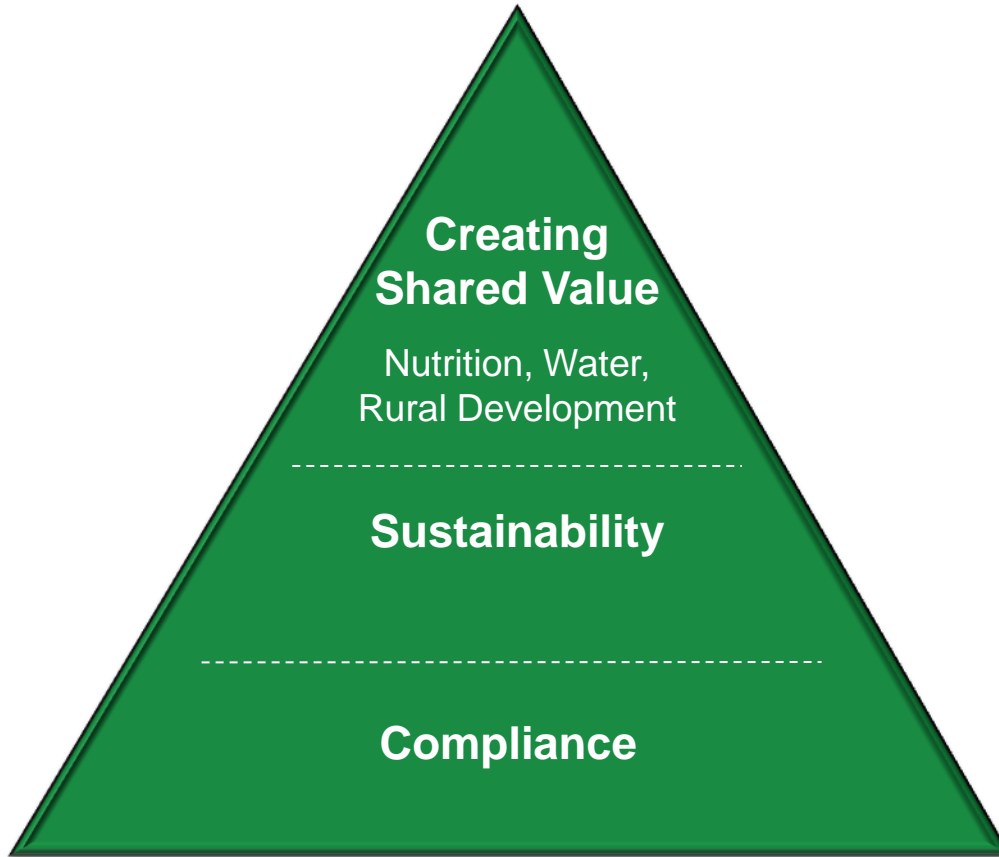


It all starts with a

NESCAFÉ



Nestlé in Society



Transparency & Expectations

Media



FOLHA DE S. PAULO

*** UM JORNAL A SERVIÇO DO BRASIL



facebook



Mobile Technology



NGO Activism



Regulation, Standards



Responsible Sourcing



Compliance & Business Integrity



Communities & Rural Development



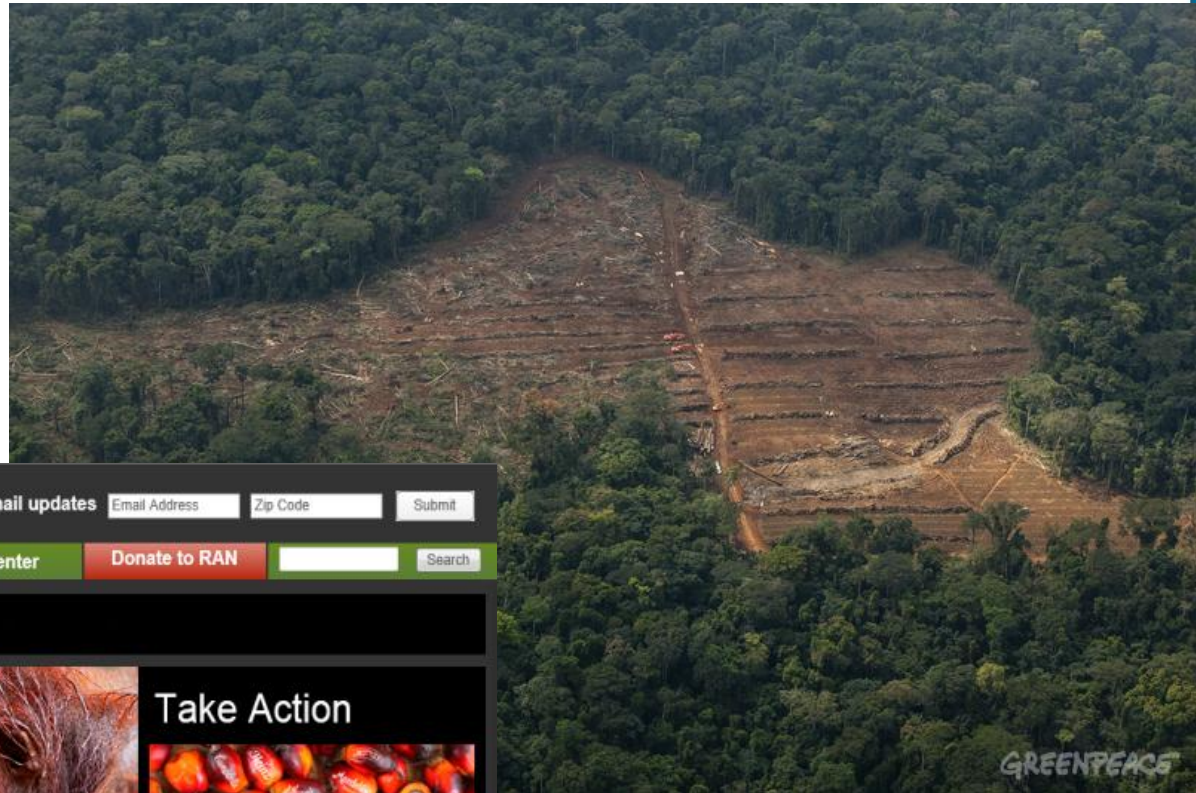
Human Rights & Labour Practices



Environmental Sustainability



Deforestation



RAINFOREST ACTION NETWORK

Get email updates

About Us Our Work Get Involved Blog Media Center **Donate to RAN**

Understory
The RAN Blog *The Power Is In Your Palm*

CONFLICT PALM OIL

How US snack food brands are contributing to orangutan extinction, climate change and human rights violations

[READ MORE](#)

Take Action



**TELL THE SNACK FOOD 20:
NO "CONFLICT PALM OIL"**

No Conflict Palm Oil
Tell the Snack Food 20 to remove "conflict palm oil" tied to rainforest destruction & orangutan extinction from their products.

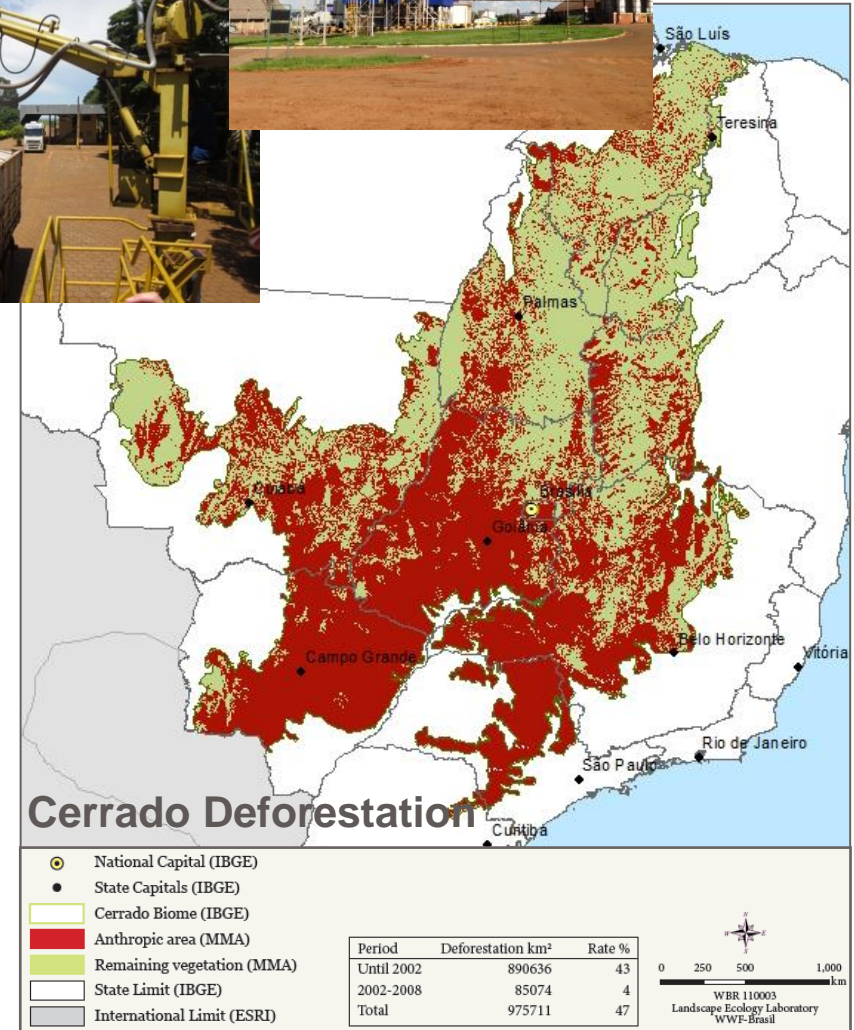
1 2 3 4 5 6 7 8

[More online actions »](#)

Get e-mail updates

And the loss of areas of High Conservation Value

Opportunities on Soya



Nestlé Progress & Experience

- 12 supply chain maps in AR & BR
- Mata Atlantica & Cerrado
- 61% Traceable. 14% Meet our RSGs

Biggest Challenges

- large supply areas
- engagement with vendors & farmers

Biggest Opportunities

- focus on key vendors
- leverage work of certification initiatives

Is Everyone Ready?

Markets have a role

Companies have the ambition

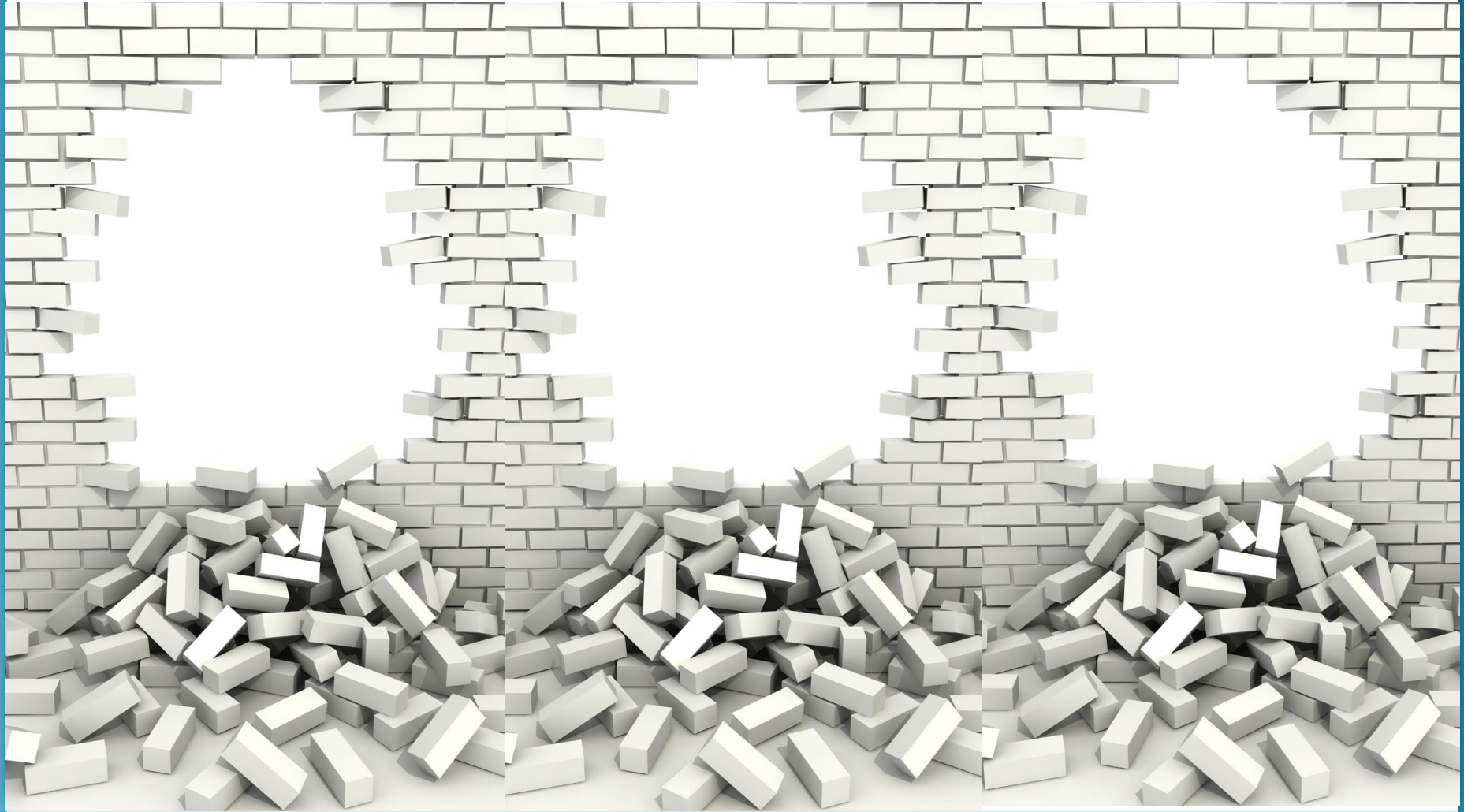
Governments can support, but politicians need the confidence to act

Financial institutions can tilt the balance

Partnerships are crucial and the way forward



Breaking the Silos



Scale Up



Thank You



Nestlé

Good Food, Good Life