



D O O R S

MONTEALBAN DOORS' FACTORY





**ANUAL PRODUCTION
500,000 DOORS**

- **45% LOCAL MARKET**
- **55% EXPORTATION**

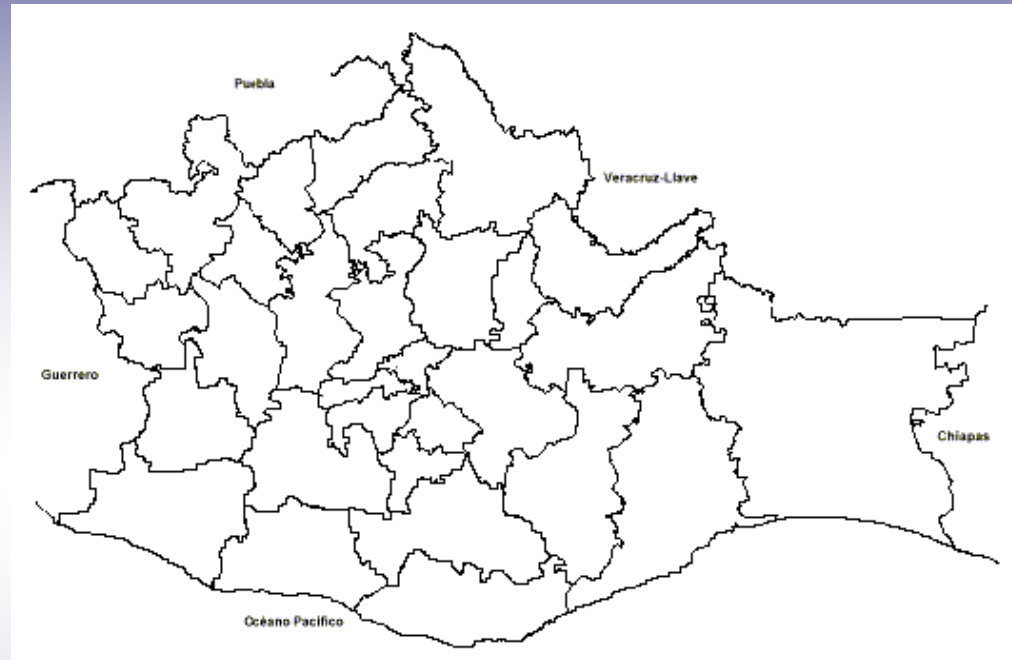


MEXICO

OAXACA



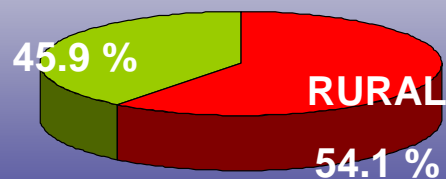
OAXACA



POPULATION

3,438,765

URBAN



570 MUNICIPALITIES

1 OFFICIAL LANGUAGE

19 NATIVE TONGUES

OAXACA

TOTAL AREA 9.3 MILLIONS HA.

FOREST AREA 5.1 MILLIONS HA.

**RAIN FOREST CONIFERAE
AREA 2.7 MILLIONS HA.**



FOREST SITUATION



**90% OF THE WOODS AND
RAIN FOREST ARE IN HANDS
OF INDIGENOUS COMMUNITIES**

PROTECTING THE PLANET



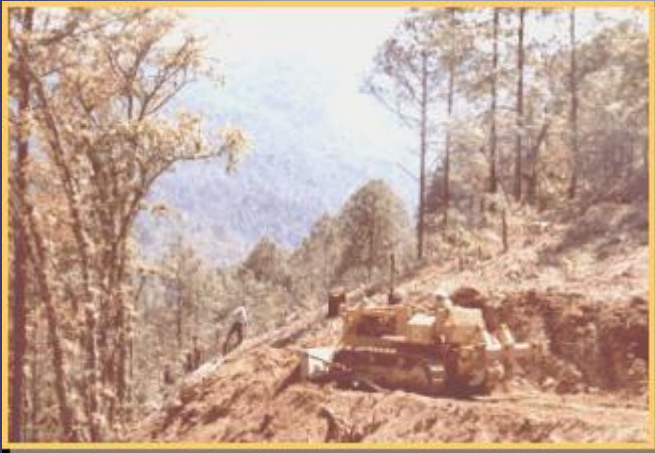
FOREST SITUATION



COMMUNITIES CLASIFICATION

LEVEL	CHARACTERISTICS
I	Communities with forest but without Manageable Forest Plan, therefore they don't take advantage of it.
II	Communities with a Manageable Forest Plan but a third figure takes advantage of it.
III	Communities which take direct advantage of the forest. They own a Communal Forest Enterprise and trains their people but they don't develop any industry. They only sell uncut timber.
IV	Communities which besides of using their forest directly, and have their own Communal Forest Enterprise. They also have their own industry (at least produce and sell sawed timber).

WORKING WITH COMMUNITIES



**OPENING
ROADS**



**TECHNICAL SUPPORT &
INDUSTRIAL KNOWLEDGMENT**





PROTECTING
THE PLANET