



Plate 1 Tree marked for felling. Vines not cut during set-up marking (Key Standard No. 5).



Plate 2 Log Clusters. Breach of Key Standard No. 13.



Plate 3 Old river crossing not decommissioned.

← This is an old disused bridge that should be decommissioned and debris removed from the stream to allow the water to flow freely ((Hihio River).



Plate 4 A fully loaded Jinker without chains.

During the field inspection on 23 rd October 2003, four logging trucks were observed to be driven without chains to secure the logs.



Plate 5 Exposed workshop waste.

This photo illustrates inappropriate disposal of waste at the Base Camp.



Plate 6 One of eight “River Dumps” along the Vailala River, between the Ihu station and the Hepea Base Camp (set-up SO3-04/C21).

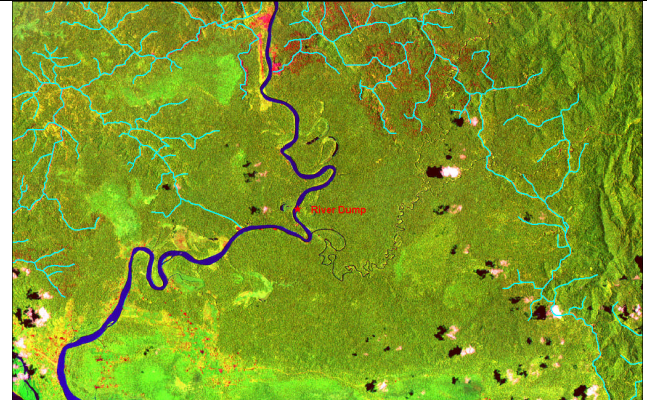


Plate 7 The location of this “dump” on a satellite photo taken in 2002. Blue lines indicate logging roads constructed up to December 2002.



Plate 8 Excess soil and log debris in stream.

This photos shows how a bulldozer has pushed soil and log debris into a stream causing ponding in set-up 02 (contingency 02). This is in breach of Key Standard 6.



Plate 9 This Klinkii pine is over 90 cm dbh age 40 years.

This Klinkii pine (*Araucaria* spp), is estimated to be approximately 40 years old, by the son of the person who planted a few of these trees in the village of Merikera. One of the trees has been converted into sawn timber and used for construction of a house.

To the left of the photo is a stand of betel nut, which is one of the main economic crops of the area.

The photo illustrates the potential productivity of forest plantations and agricultural enterprises in the Vailala Block 1 area.



Plate 10 High quality logs abandoned to rot.

This pile of logs was abandoned after the operations in the Opoa area were disrupted. The logs have been prepared for export, tagged and left to rot (located at GPS 07°51'32" S, and 145°42'44"E).

Many more such logs were seen by the Review Team in the area either at abandoned log landings or along the roadside.

This is a considerable waste of a valuable resource and a loss of tax revenue for the national government, even if royalty has been paid to the landowners.



Plate 11 The Bluff-Mamuro road, a provincial highway.

This part of the Bluff to Mamuro road has collapsed due to inadequate construction standards and maintenance even though this road is noted in the Project Agreement (4.1, (b) (i), to be constructed ...to a standard which;

- (i) is equal or greater than that determined in accordance with the Department of Works Design Manual Part 2, Rural Roads for Medium Traffic Category.
- (ii) incorporates permanent materials for all drainage structure; and
- (iii) is trafficable in all weather conditions by conventional two-wheel drive vehicles.



Plate 12 Breaches of Key Standards 1 and 10.

Another example of excessive disturbance to, and debris in, a Class 2 stream.