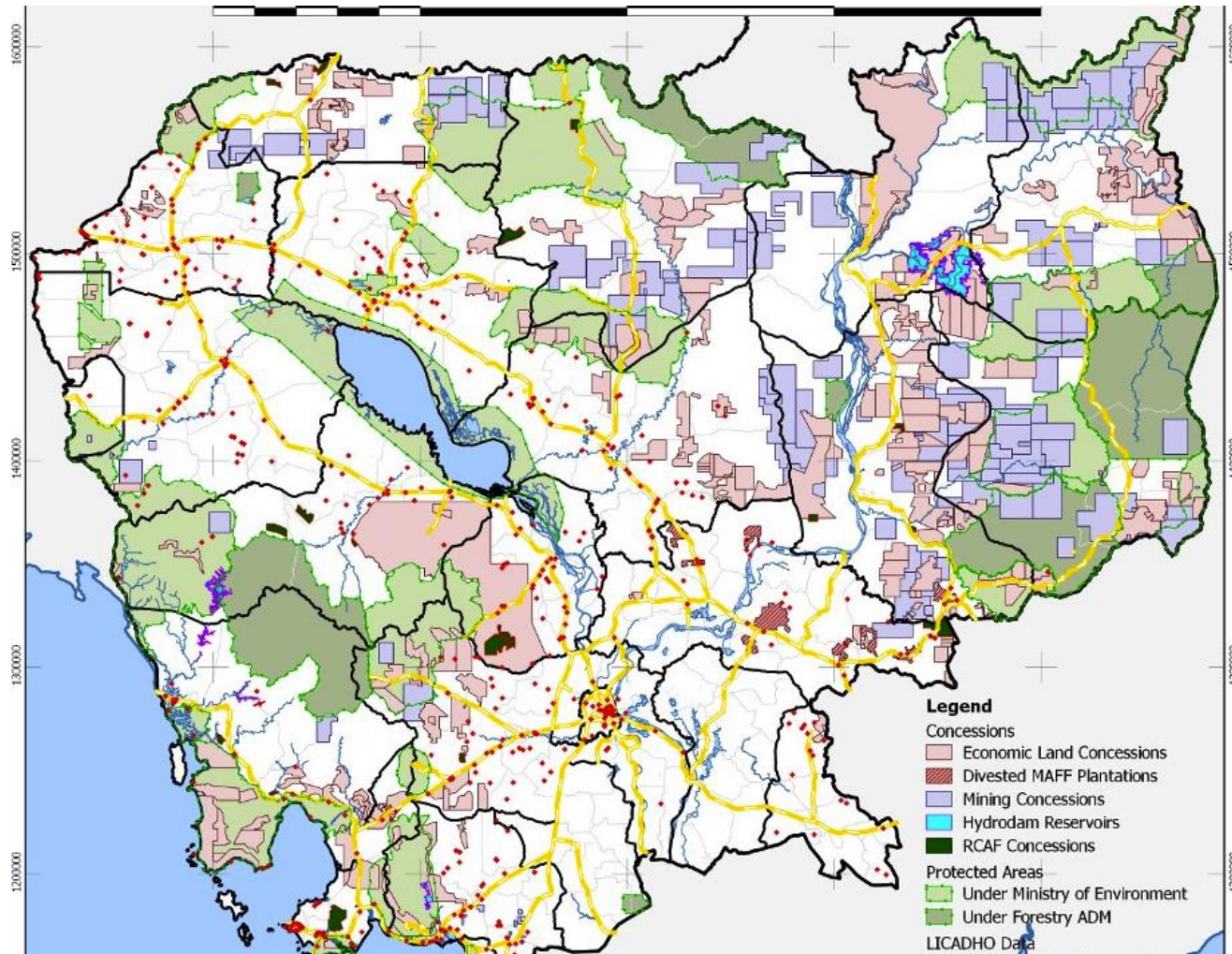


# Cambodian Clean Sugar Campaign

Resisting illegal land grabbing, forest conversion and human rights abuses by the sugar industry in Cambodia



# Literally...



Economic Land Concessions (ELCs) (\*):  
2,036,170 hectares  
Mining Concessions:  
1,900,311 hectares

Cambodia's Ground Area:  
17,650,913 hectares  
Cambodia's Arable Area:  
3,607,847 (20.44%)

ELCs / Arable:  
56.44%

ELCs + Mining / Ground:  
22.30%

(\*) Includes Union Development Group, Try Pheap and LYP SEZs, and Divested MAFF Plantations

# The numbers

- Cambodia's total landmass = 17,650,913 ha
- Cambodia's total arable landmass = 3,607,847 ha
- Agro-industrial concessions = 2,200,000 ha **= 61% of total arable landmass**

+

Mining exploration - 1,900,000 ha

# The costs of the sell-off

- Massive deforestation
  - FAO: 29% of tropical forest cover lost in 5 years (2003-2008)
  - Destruction of forests means the destruction of livelihoods for hundreds of thousands of people
- Massive displacement and dispossession
  - At least 700,000 displaced and dispossessed since 2003
- Indigenous Peoples particularly hard hit by rapid agro-industrial development and mining



# Fueling the crisis



# The sugar boom



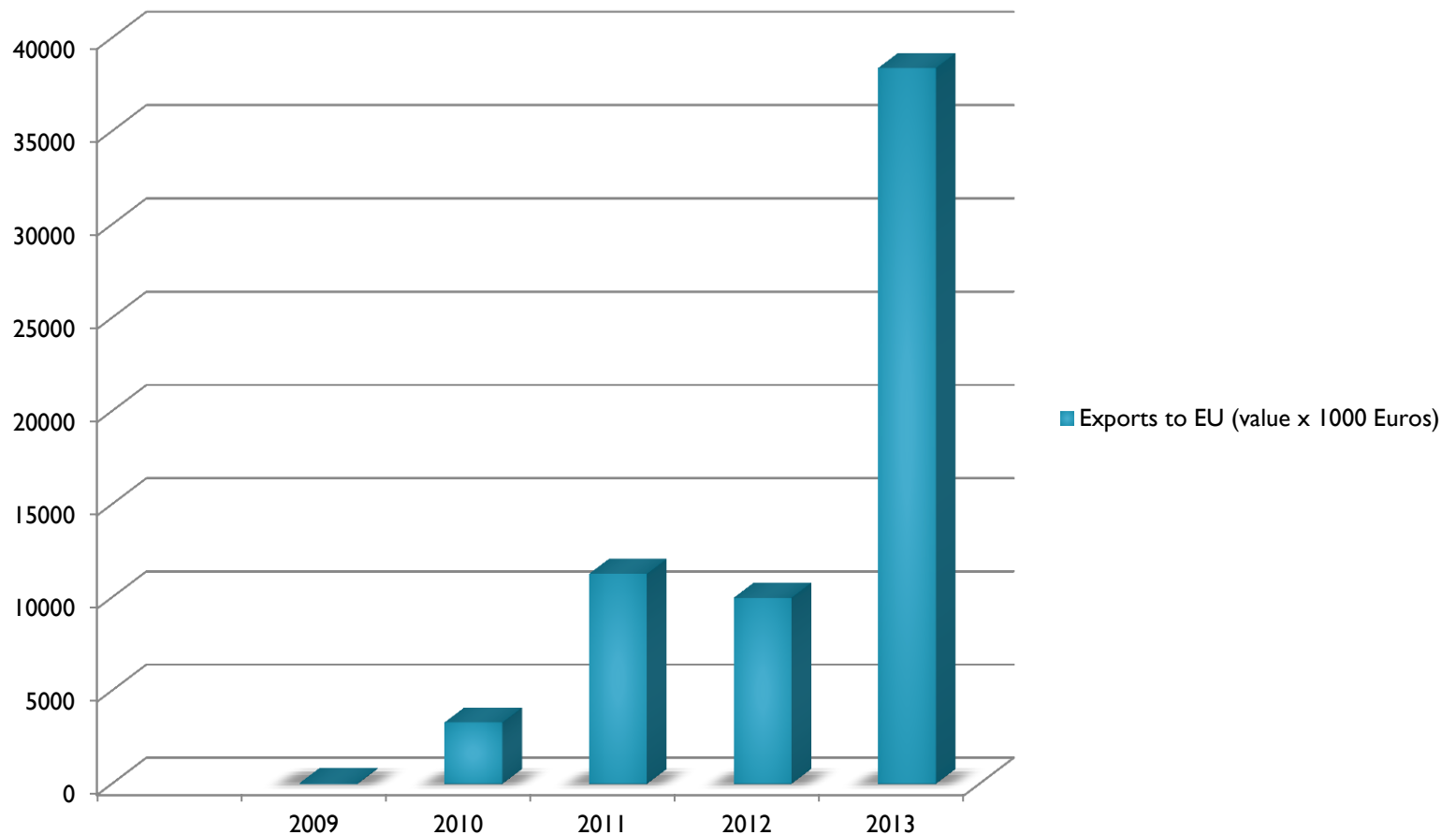


# Everything But Arms

- Cambodian sugar exports to the EU currently benefit from special status under a preferential trade scheme called Everything But Arms (EBA).
- This initiative permits goods produced in Cambodia to be exported to the EU without import duties or quotas and, in the case of sugar, at a guaranteed minimum price.

# Cambodia's exports to EU

Cambodia, Exports to EU (2008-2012)





# Bittersweet harvest





# Clean Sugar Campaign

- Stop human rights abuses and environmental damage caused by the sugar industry in Cambodia;
- Bring about a just resolution for the individuals and communities that have been harmed by the industry; and
- Ensure that the agricultural development and trade policies benefit smallholder farmers and local communities.



# Targeting producer companies, their investors and major buyers



MITR PHOL



Deutsche Bank





# Actions taken to demand accountability

- Filed Complaints against Tate & Lyle and Mitr Phol with Bonsucro, alleging non-compliance with Bonsucro Code of Conduct
  - **Result: Tate & Lyle was suspended and then withdrew; Mitr Phol withdrew. Both companies now deprived of the benefits of Bonsucro membership.**
- Complaints against KSL and Mitr Phol with Thai HR Commission
  - **Investigations pending**

# Actions taken to demand accountability

- Complaint filed against American Sugar Refining (parent co. of Tate & Lyle Sugars) with US National Contact Point for the OECD Guidelines on Multinational Enterprises
  - Result: ASR refused to cooperate in dispute resolution process facilitated by NCP so case was closed with recommendation that ASR adopt a comprehensive human rights policy and establish grievance mechanism.

# Actions taken to demand accountability

- Exposure and engagement with investors/financiers: Deutsche Bank and ANZ
  - Deutsche Bank exposed in major German media
  - ANZ exposed in major Australian media
  - **Result: Both banks have divested and failed to take responsibility for the harms caused by their investments.**
  - **We will continue to hold them accountable to their policies and human rights responsibilities**

# Actions taken to demand accountability

- Exposure and engagement with buyers: Tate & Lyle, Coca Cola and Pepsi
  - **Tate & Lyle exposed on front page of The Guardian. They have refused to engage in dialogue.**
  - **Coke and Pepsi both committed to zero tolerance for land grabs in supply chain**
  - **Coke undertook human rights impact assessment of its supplier, Mitr Phol.**
  - **Dialogue with Coke ongoing**



# Actions taken to demand accountability

- Transnational legal action:
  - Lawsuit filed in the UK High Court by displaced Cambodian villagers against Tate & Lyle / Tate & Lyle Sugars
    - Claim alleges Tate & Lyle is peddling fruits of stolen land and the villagers have a claim on part of the value of the raw sugar that Tate & Lyle purchased and sold.
    - UK court granted jurisdiction and trial to be held in October.
  - Other legal actions currently being explored against different firms in various jurisdictions.

# EU-EBA Campaign

- European Commission has the means under the GSP regulation to suspend EBA preferences on a product-specific basis on the basis of serious and systematic violations of human rights.
- Petition with over 60,000 signatures
- Two supportive resolutions from the European Parliament
- Until it does take action, the EU will be complicit in these violations.



For more info: visit  
[www.cleansugarcampaign.org](http://www.cleansugarcampaign.org)

Thank you for your attention!