



**Policy Practice on Sustainable Timber  
Trade of Chinese Government**

**Song Wei-ming**

**Beijing Forestry University**



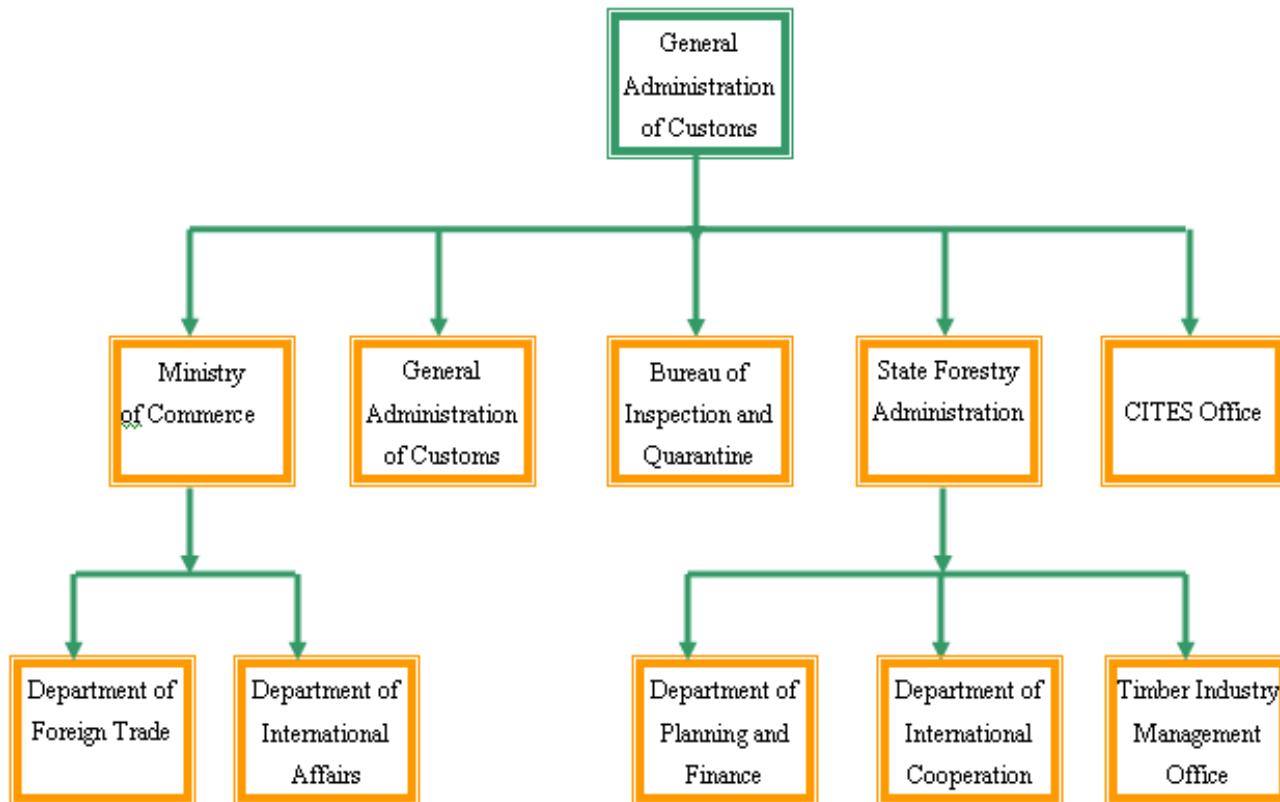
## **Research Background**

---

- **Sustainable development problems of international timber trade**
- **Concerns on sustainable timber trade of international community**
- **Challenges of rapid development of China's timber trade**
- **Irreplaceable role of policy in promoting sustainable timber trade**

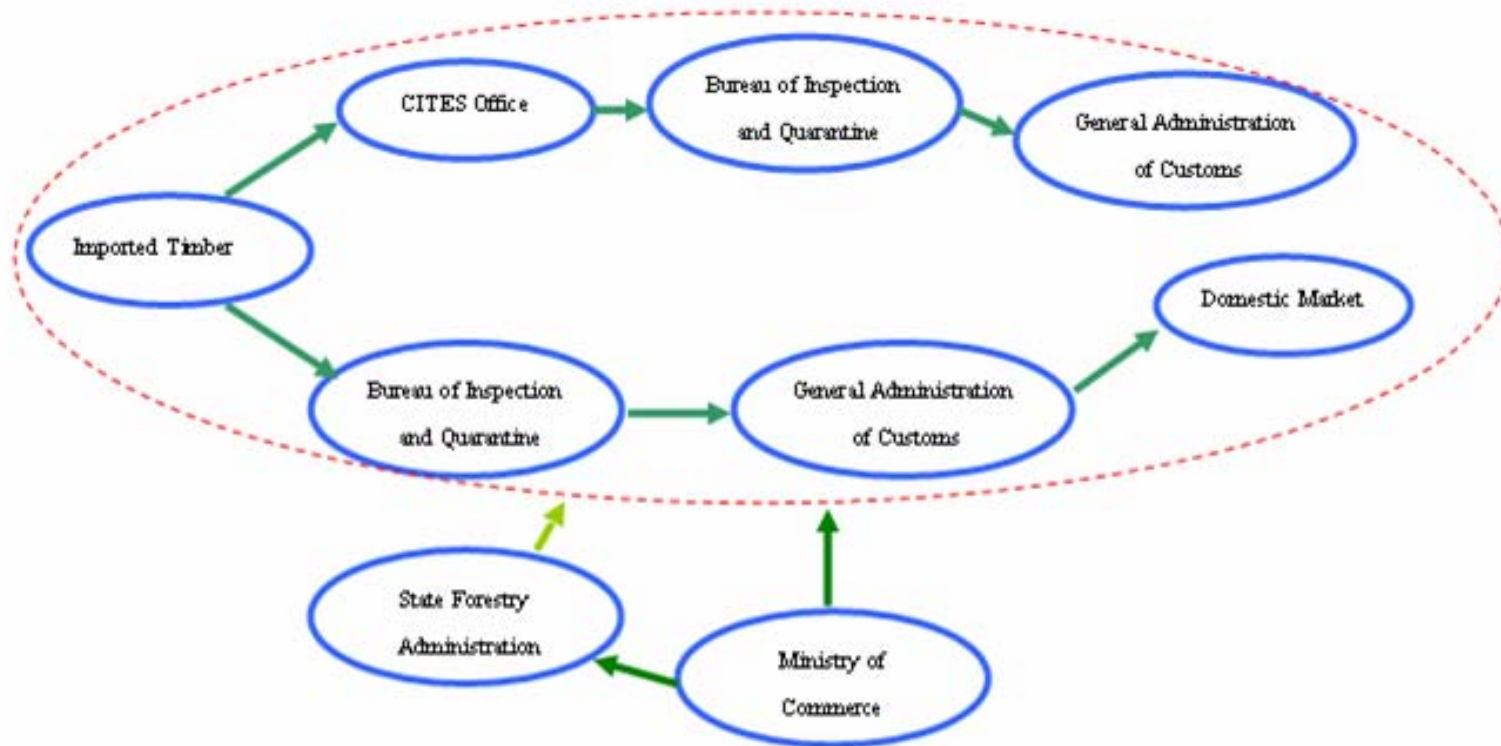
# Management Framework and Sustainable Development Policy of Central Government

- Management framework of timber trade



---

- **Management process of timber trade**



---

- **Policy practice on promoting sustainable timber trade of central government**

- Domestic Level**

- Re-export of sawnwood processed by imported log
    - Small border trade
    - Subsidy on foreign economic and technological cooperation
    - Taxation adjustment on some wooden products
    - Implementation of inspection and supervision on wooden products and wooden furniture export

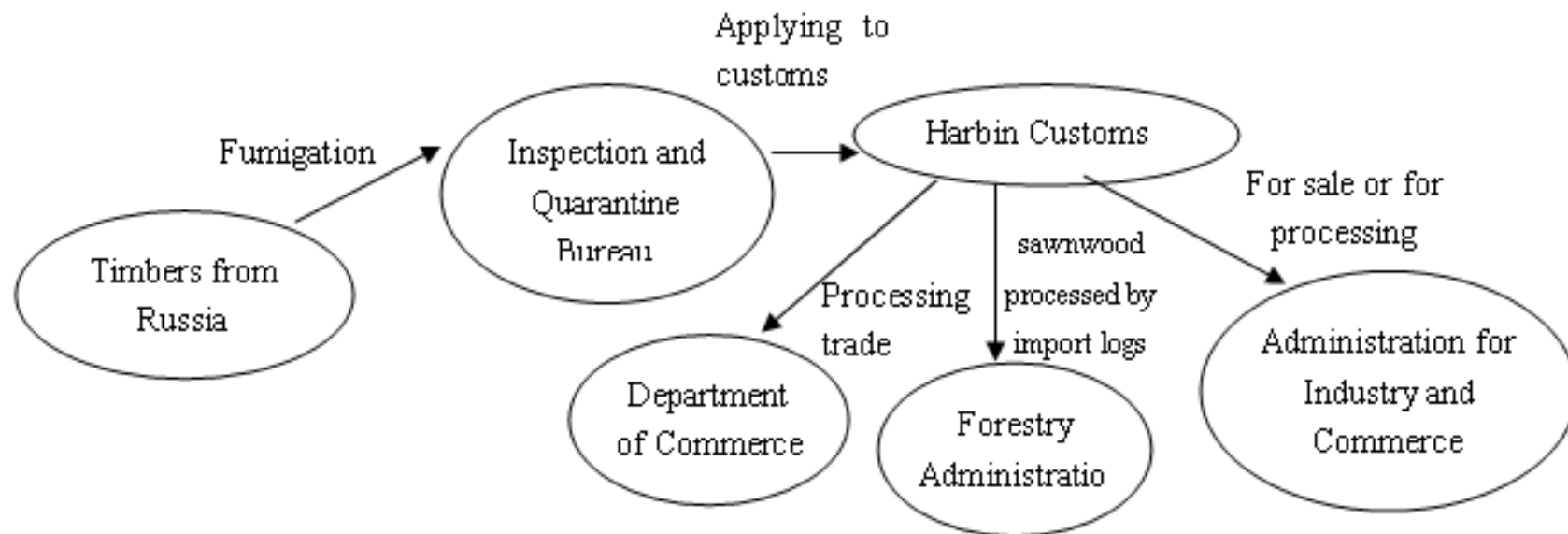
---

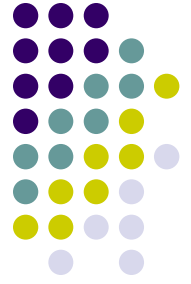
## -- International Level

- Managers Training program from timber producing countries
- Forest protection and reforestation project with neighboring developing countries
- Mutually beneficial forest fostering and use with timber producing countries
- Attacking on illegal logging by way of international cooperation

# Trade Management and Sustainable Development Policy of Local Government

- Heilongjiang Province
- Management process

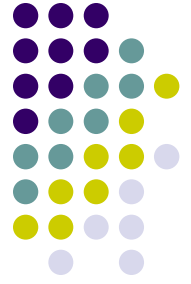




## -- Policy practice of provincial government

- 1. Department of Commerce**
- 2. Department of Forestry**
- 3. General Bureau of Forest Industry**
- 4. Harbin Customs**



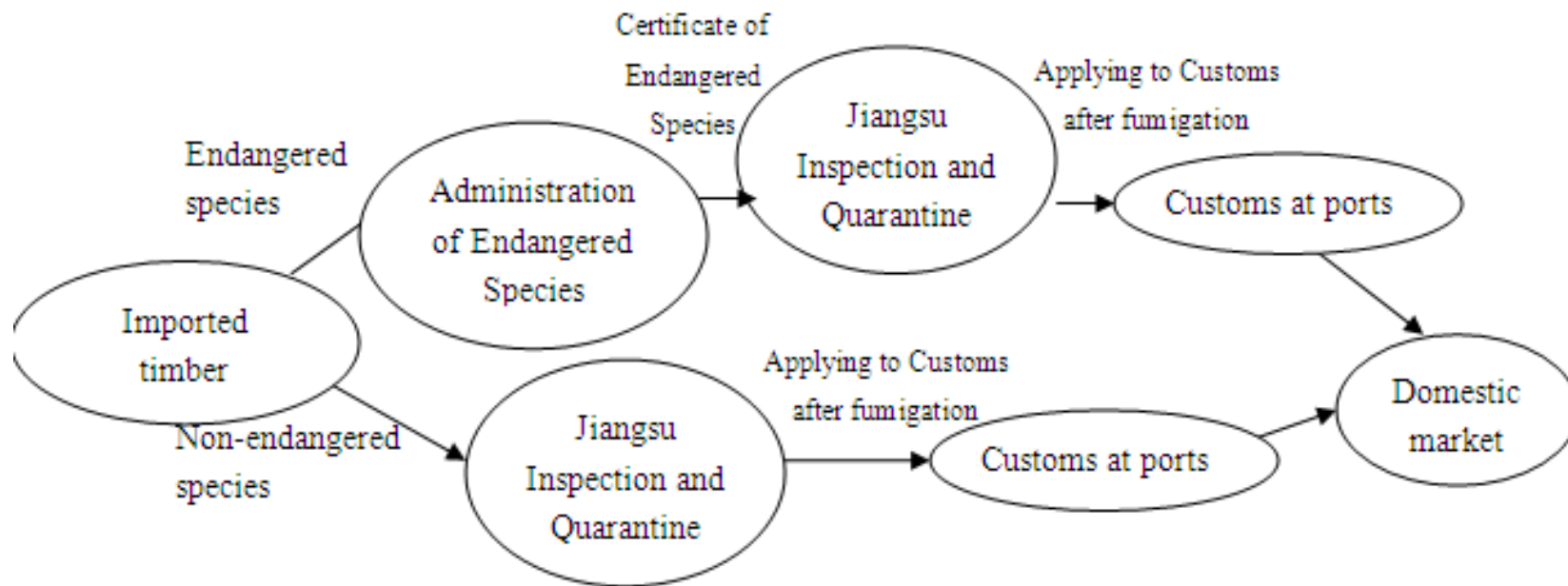


## -- Policy practice of gateway government

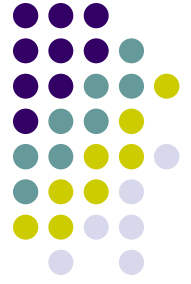
- **Preferential policies for foreign trade enterprise**
- **Preferential policies for attracting foreign investment in the field of timber industry**
- **Constructing timber processing park with local government of Russia**

# Policy practice of Jiangsu province

## -Management process



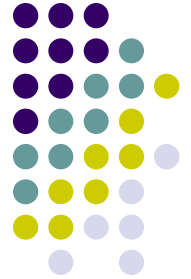
## **Policy practice of provincial government**



- ◆ **Use of trade policy and ecological construction to promote the comprehensive development of forestry**
- ◆ **Use of finance policy to promote scale business of forestry industry**
- ◆ **Use of technology policy to enhance development level of timber industry**
- ◆ **Use of forest certification to promote forest management and timber trade in an orderly manner and standardization**

# The role of enterprise in promoting sustainable timber use

## Dare global group



1. Using domestic timber resource
2. Participating forest certification

Branches of Dare group certified by COC

<b>Branches</b>	<b>Year</b>
<b>MDF factory in Jiangsu</b>	<b>2006</b>
<b>Particleboard factory in Fujian</b>	<b>2007</b>
<b>MDF factory in Guangdong</b>	<b>2007</b>
<b>MDF factory in Jiangxi</b>	<b>2007</b>

3. Comprehensive timber use



## **Main Conclusions**

- ◆ **China's rapid timber import is caused not only by domestic fast economy but also by unreasonable international division**
- ◆ **The root cause of unsustainable problems of international timber trade lie in in low efficient forest resource management. Not only timber processing countries but also timber consuming countries should be responsible for sustainable development of global forest.**
- ◆ **Chinese government highly emphasizes sustainable timber trade and has formulated sustainable development policies.**



## **Main Conclusions**

- ◆ **Policies of central government is being actively implemented, although there are some imperfect aspects.**
- ◆ **Forest certification is an effective measure to realize sustainable timber trade. Chinese government and some enterprises are positively practicing. However, there are many problems in specific certification to be solved. Thus, both international community and Chinese government have many things to do.**

**Thanks**

