



# Complex supply chains: Sourcing through multiple countries

October 25<sup>th</sup> 2017

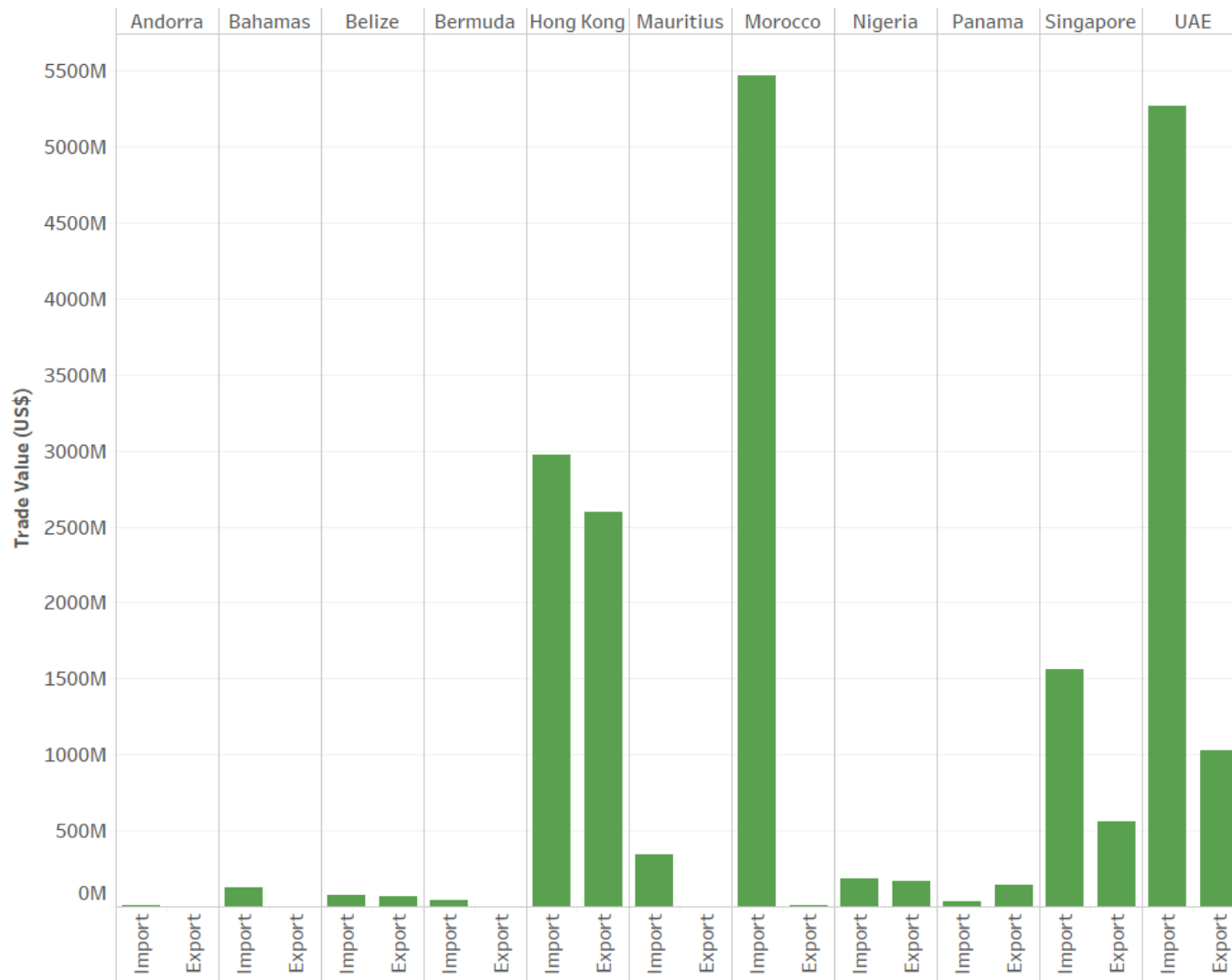
## Complex supply chains

- The complexity of the supply chain is one key consideration in assessing the level of risk in a supply chain.
- “Risk” means the risk of buying illegal wood, not simply the risk of illegal logging.
- EUTR guidance suggests that complexity of the supply chain increases :
  - with the number of processors and intermediaries between the place of harvest and the operator.
  - If there several processors and/or steps in the supply chain before a particular timber product was placed on the EU market.
  - If timber and/or timber products have been traded in more than one country before they were placed on the EU market.



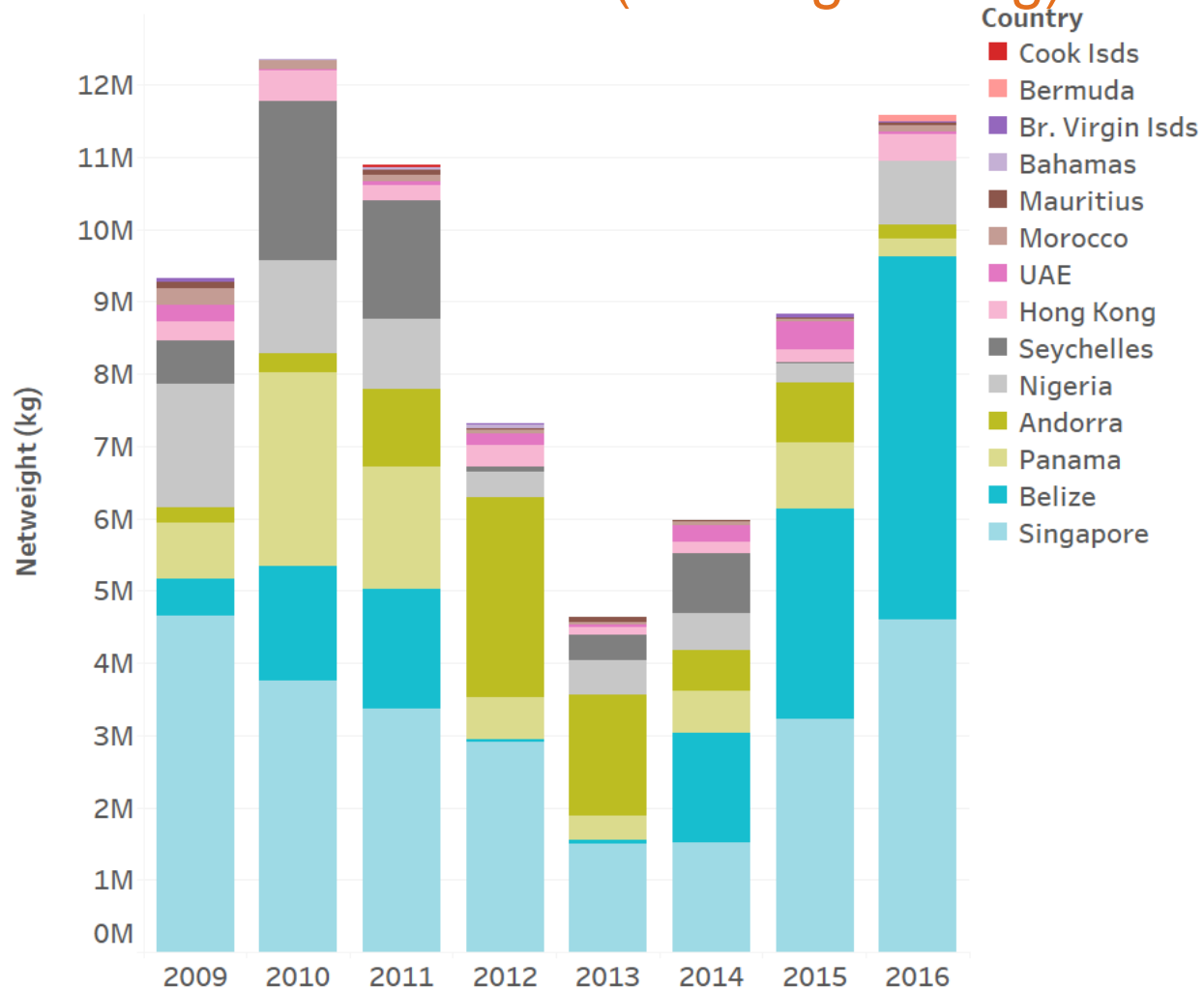
FOREST  
TRENDS

# Imports and exports of countries



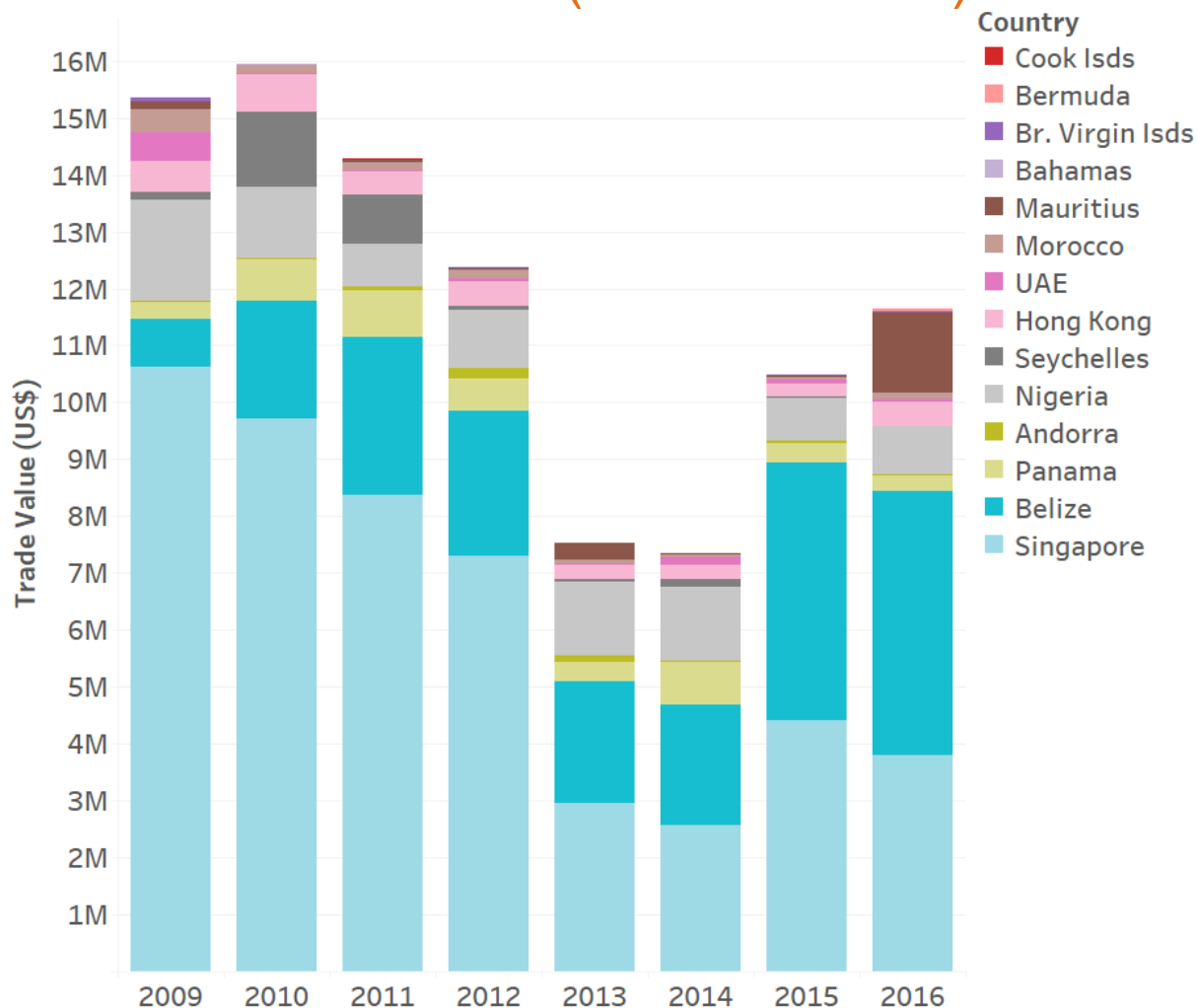
Source: Data from UN Comtrade, 2017. Compiled by Forest Trends, 2017

# Regulated market imports of logs and sawn wood between 2009 and 2016 (netweight in kg)



Source: Data from UN Comtrade, 2017. Compiled by Forest Trends, 2017

# Regulated market imports of logs and sawn wood between 2009 and 2016 (value in USD)

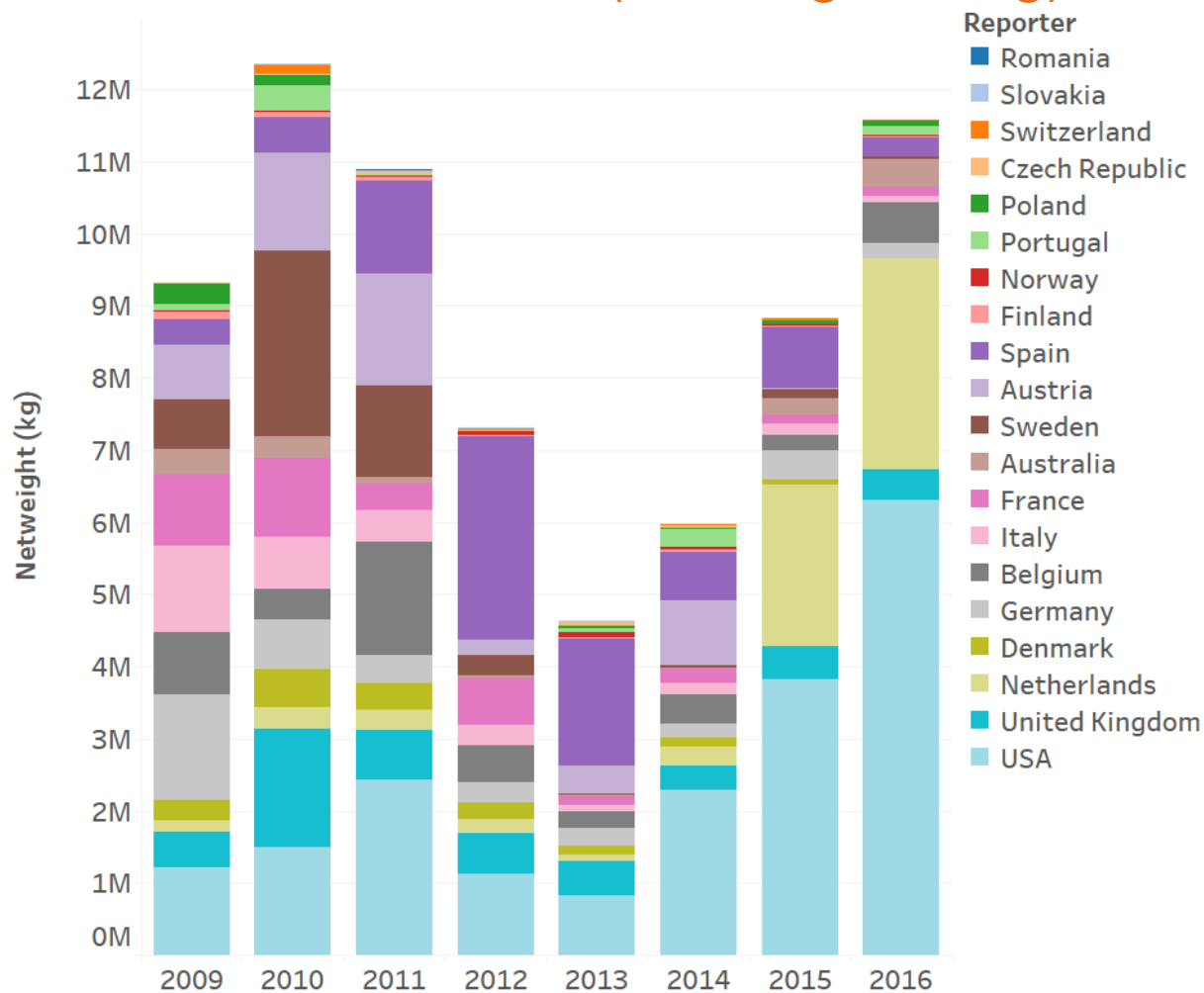


Source: Data from UN Comtrade, 2017. Compiled by Forest Trends, 2017



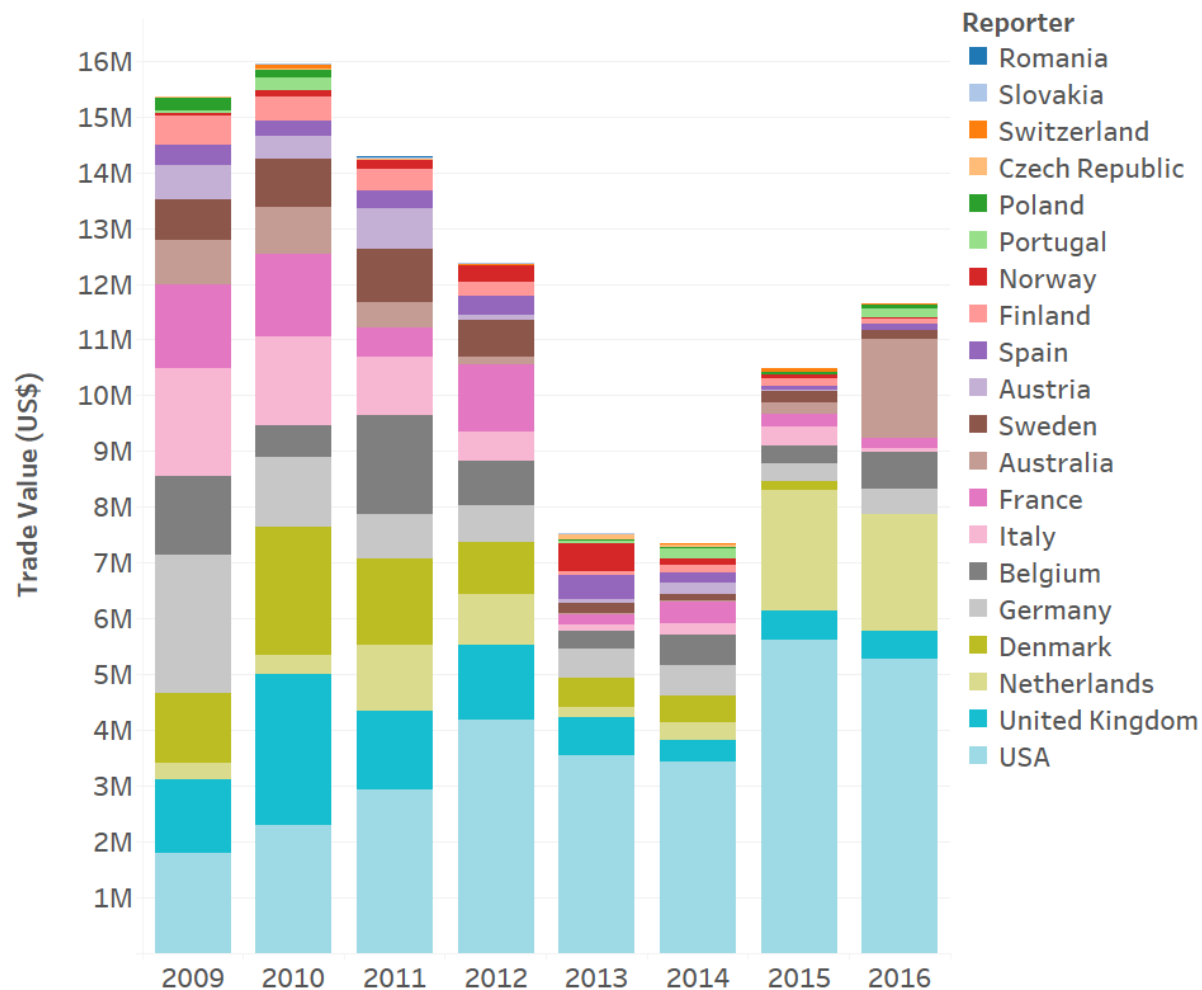
**FOREST  
TRENDS**

# Regulated market imports of logs and sawn wood between 2009 and 2016 (netweight in kg)



Source: Data from UN Comtrade, 2017. Compiled by Forest Trends, 2017

# Regulated market imports of logs and sawn wood between 2009 and 2016 (value in USD)

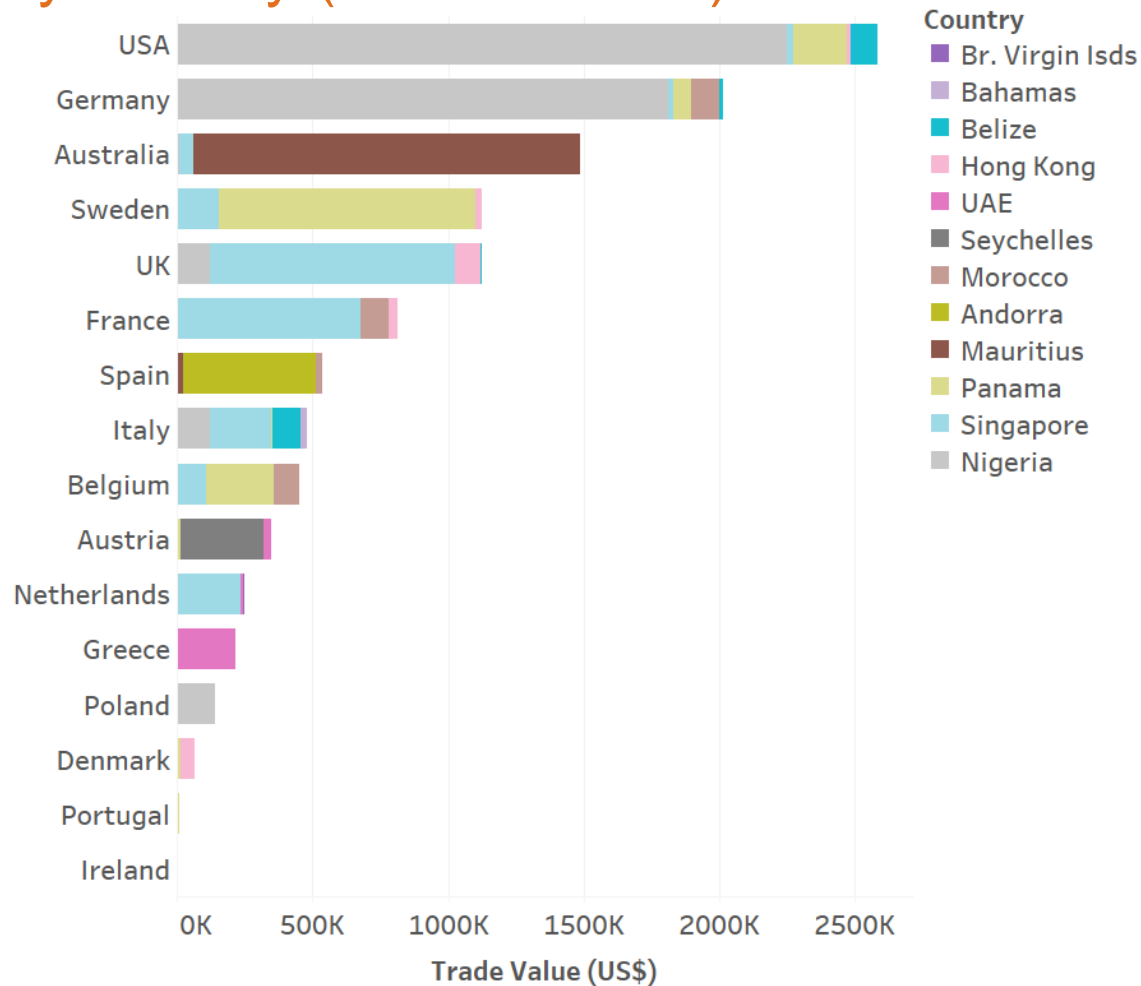


Source: Data from UN Comtrade, 2017. Compiled by Forest Trends, 2017



**FOREST  
TRENDS**

# Regulated market imports of logs between 2009 and 2016 by country (value in USD)



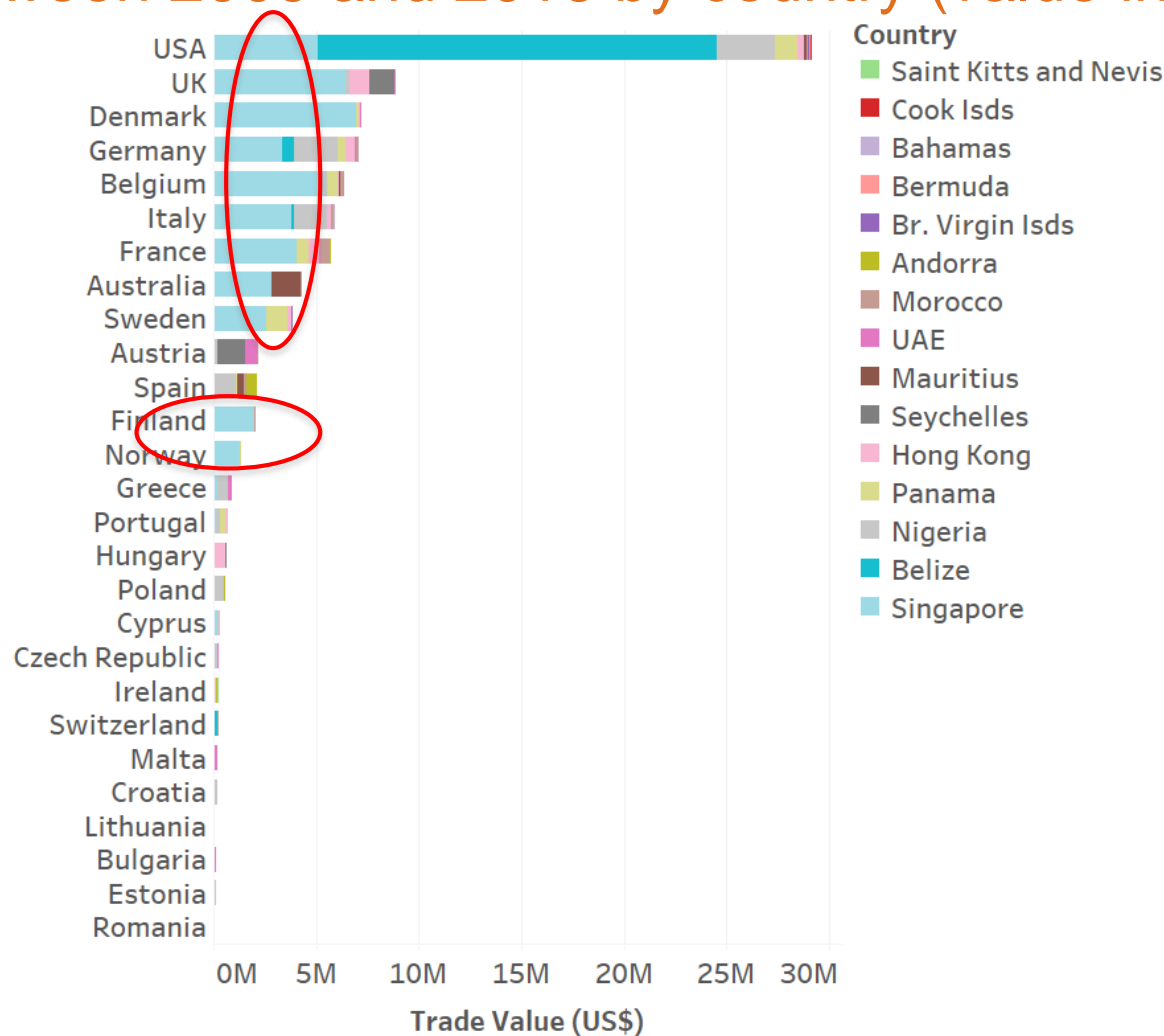
Source: Data from UN Comtrade, 2017. Compiled by Forest Trends, 2017



**FOREST  
TRENDS**



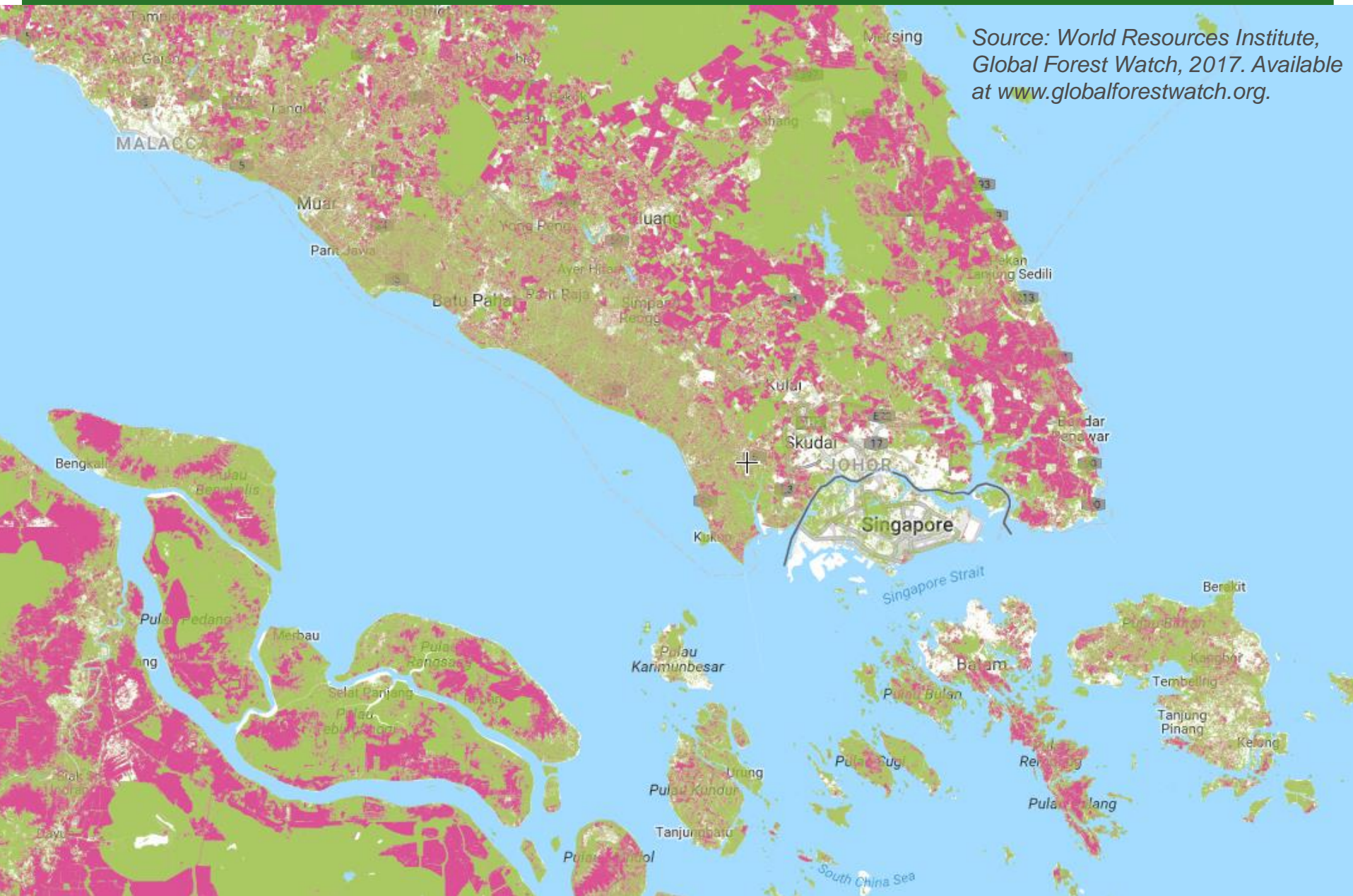
# Regulated market imports of logs and sawn wood between 2009 and 2016 by country (value in USD)



Source: Data from UN Comtrade, 2017. Compiled by Forest Trends, 2017

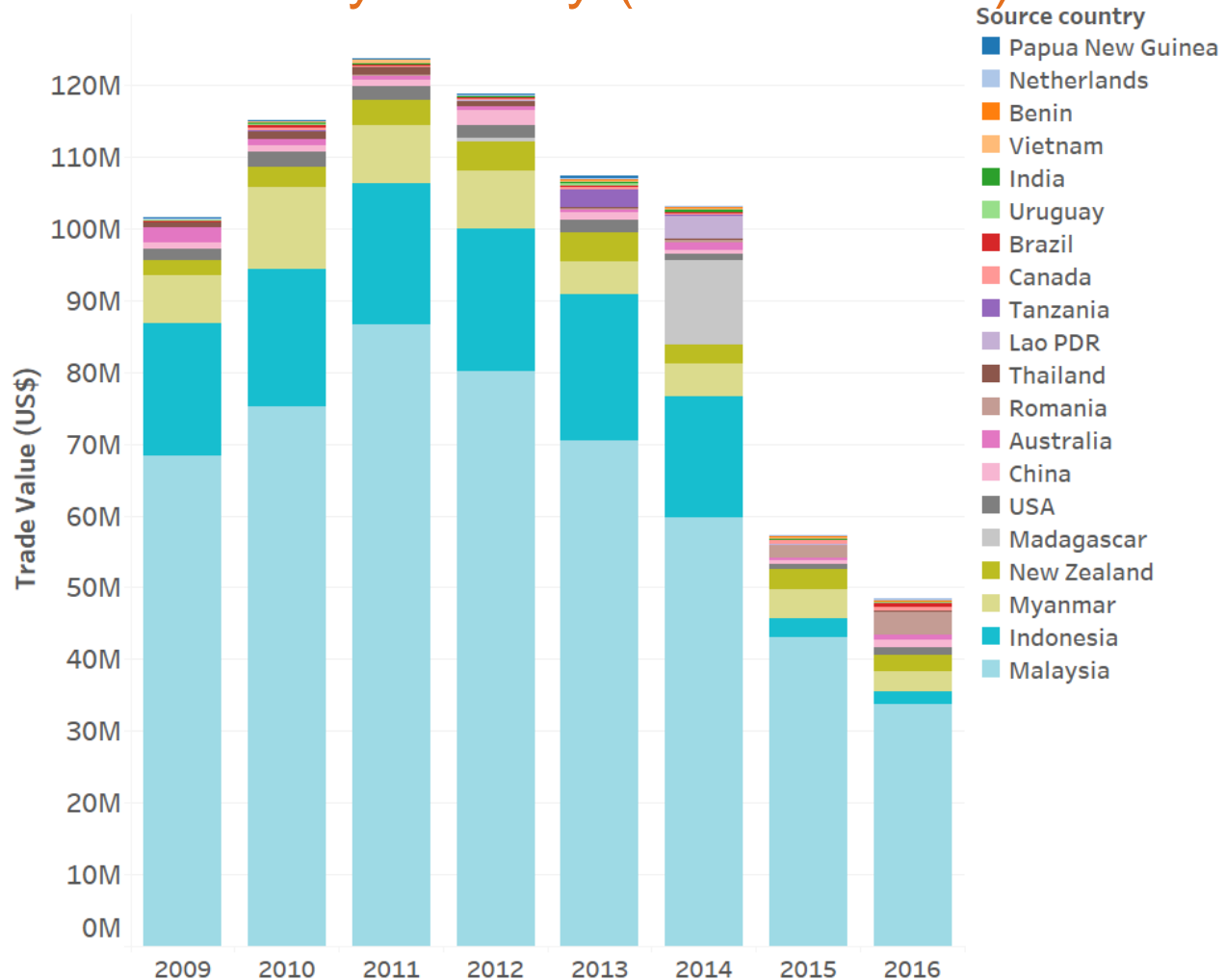


FOREST  
TRENDS



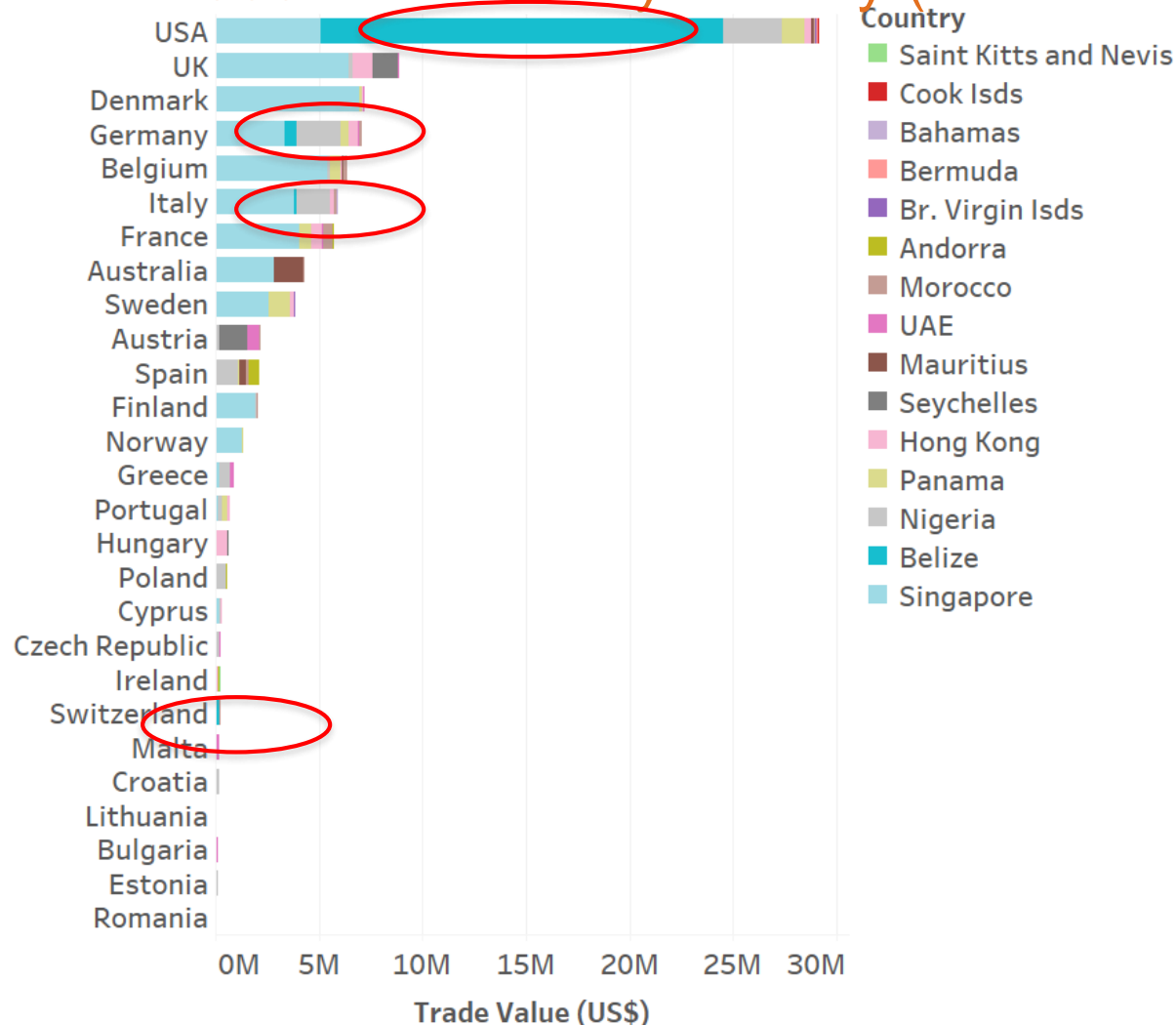
Source: World Resources Institute, Global Forest Watch, 2017. Available at [www.globalforestwatch.org](http://www.globalforestwatch.org).

# Singapore's imports of logs and sawn wood between 2009 and 2016 by country (value in USD)



Source: Data from UN Comtrade, 2017. Compiled by Forest Trends, 2017

# Regulated market imports of logs and sawn wood between 2009 and 2016 by country (value in USD)



Source: Data from UN Comtrade, 2017. Compiled by Forest Trends, 2017

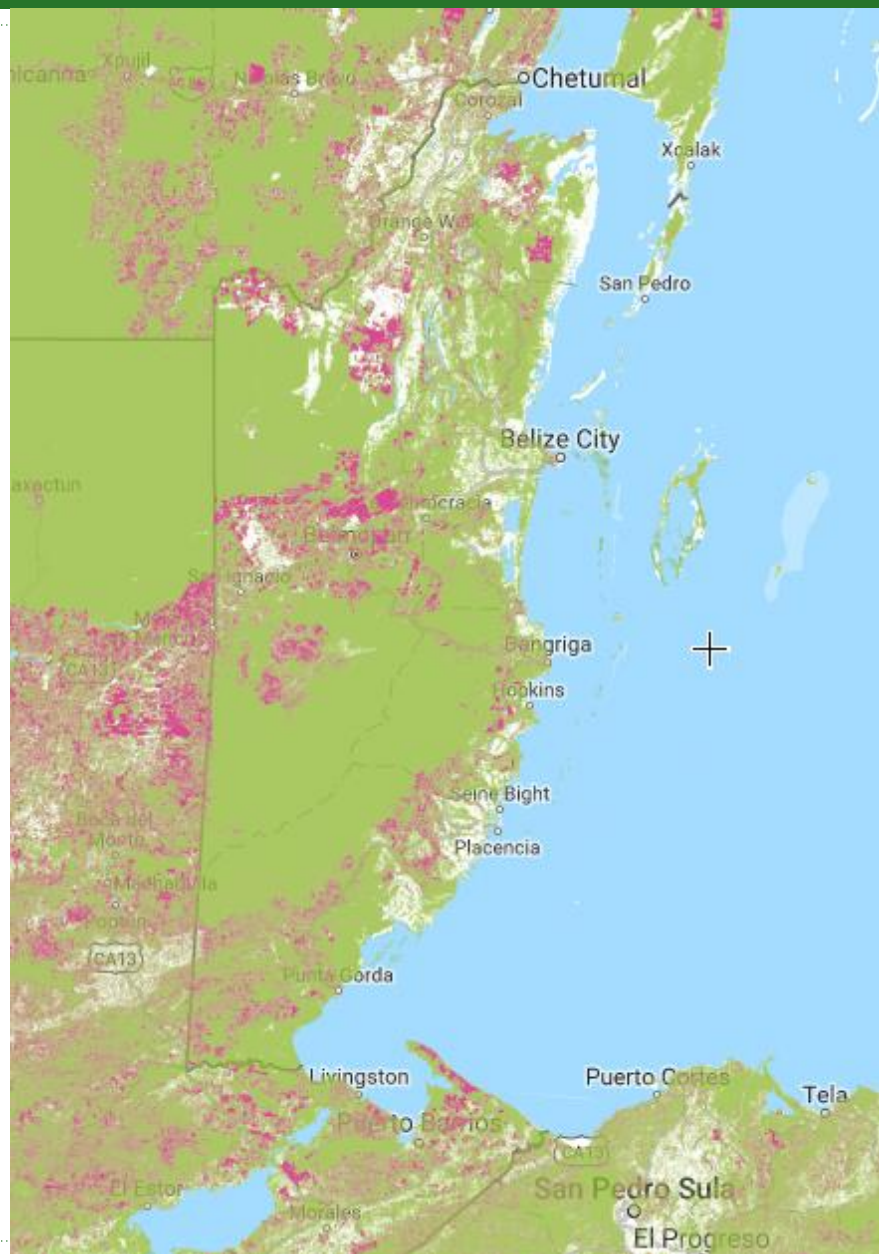


FOREST  
TRENDS



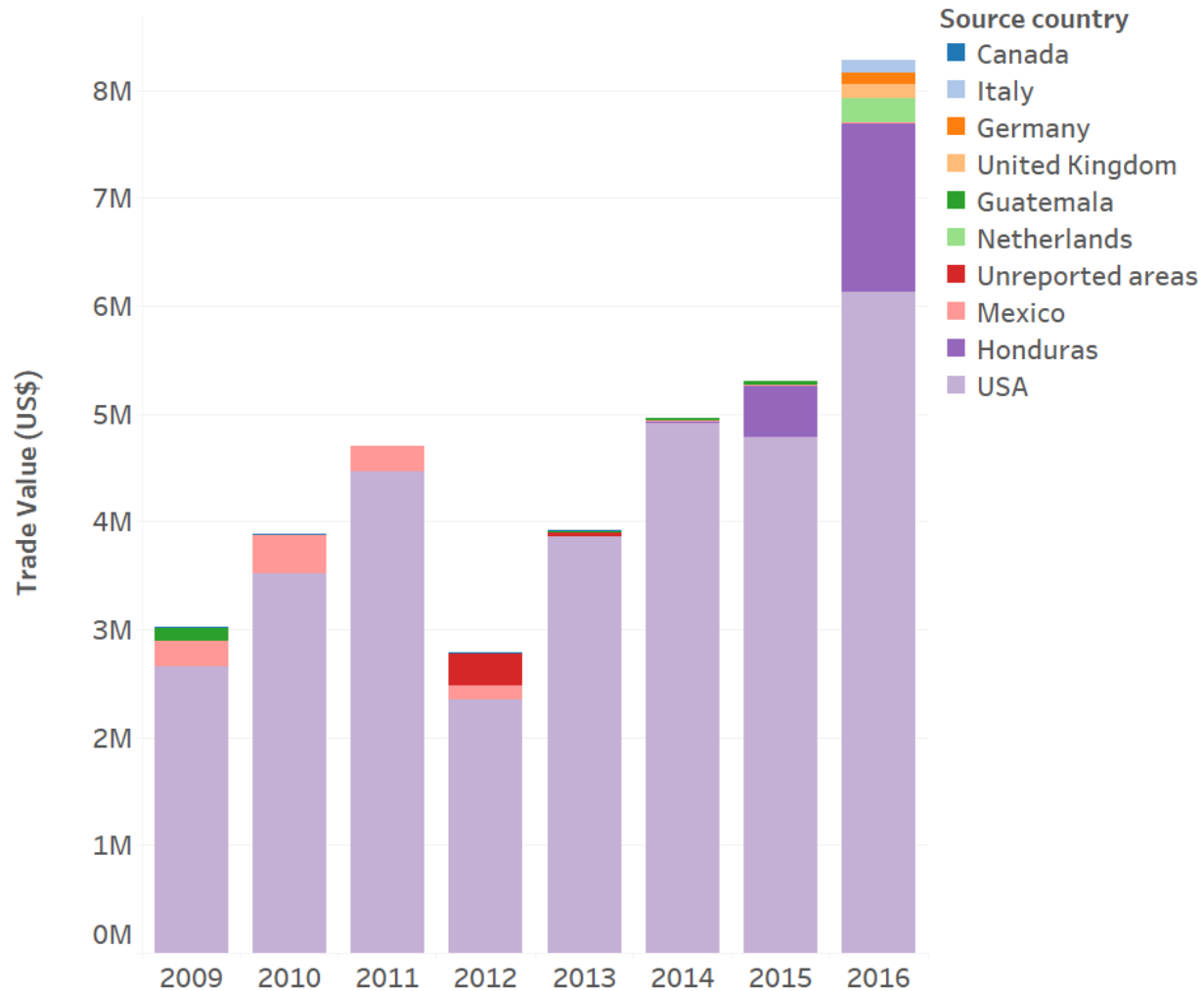


**FOREST  
TRENDS**



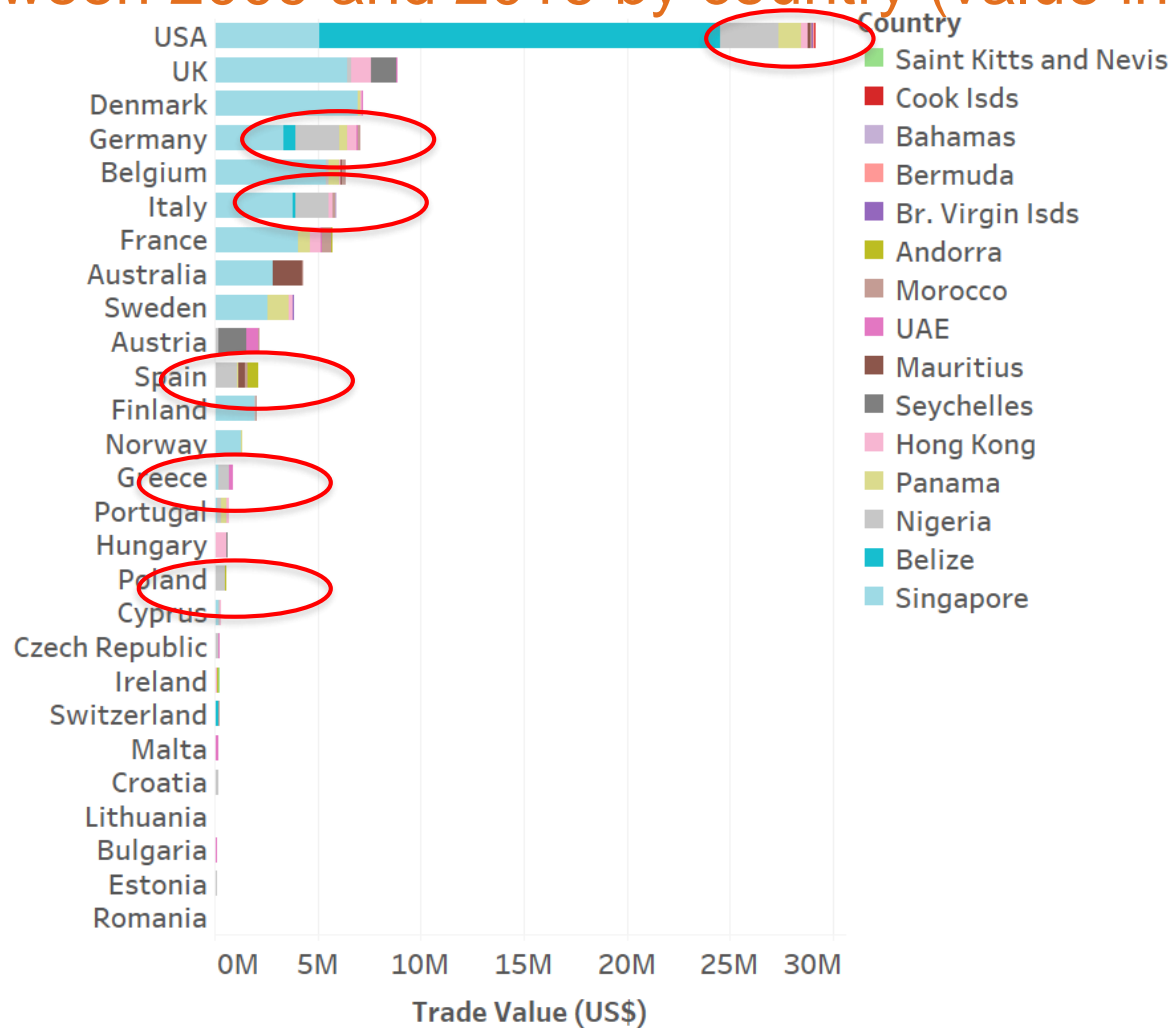
Source: World Resources  
Institute, Global Forest Watch,  
2017. Available at  
[www.globalforestwatch.org](http://www.globalforestwatch.org).

## Belize's imports of logs and sawn wood between 2009 and 2016 by country (value in USD)



Source: Data from UN Comtrade, 2017. Compiled by Forest Trends, 2017

# Regulated market imports of logs and sawn wood between 2009 and 2016 by country (value in USD)



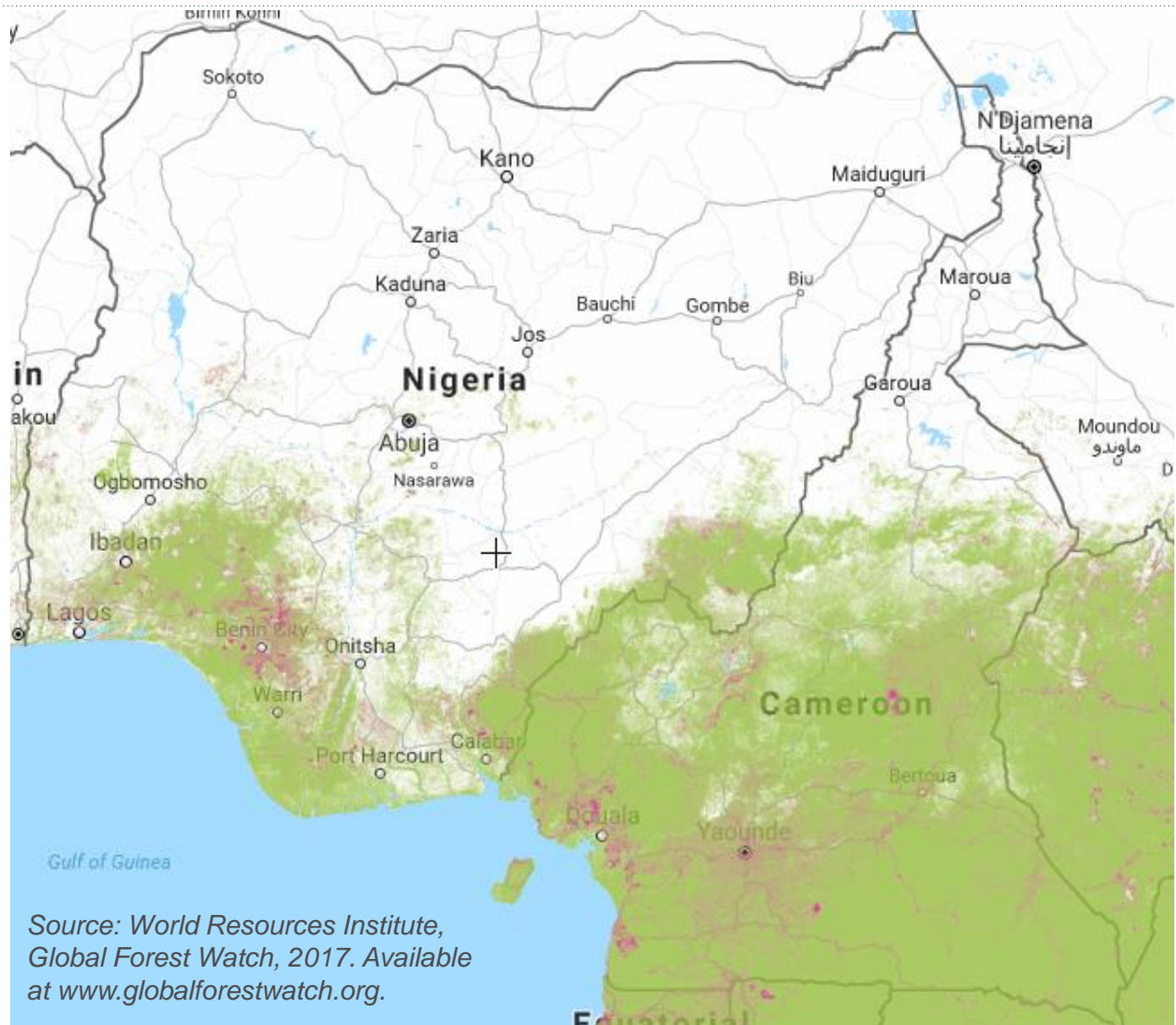
Source: Data from UN Comtrade, 2017. Compiled by Forest Trends, 2017



FOREST  
TRENDS



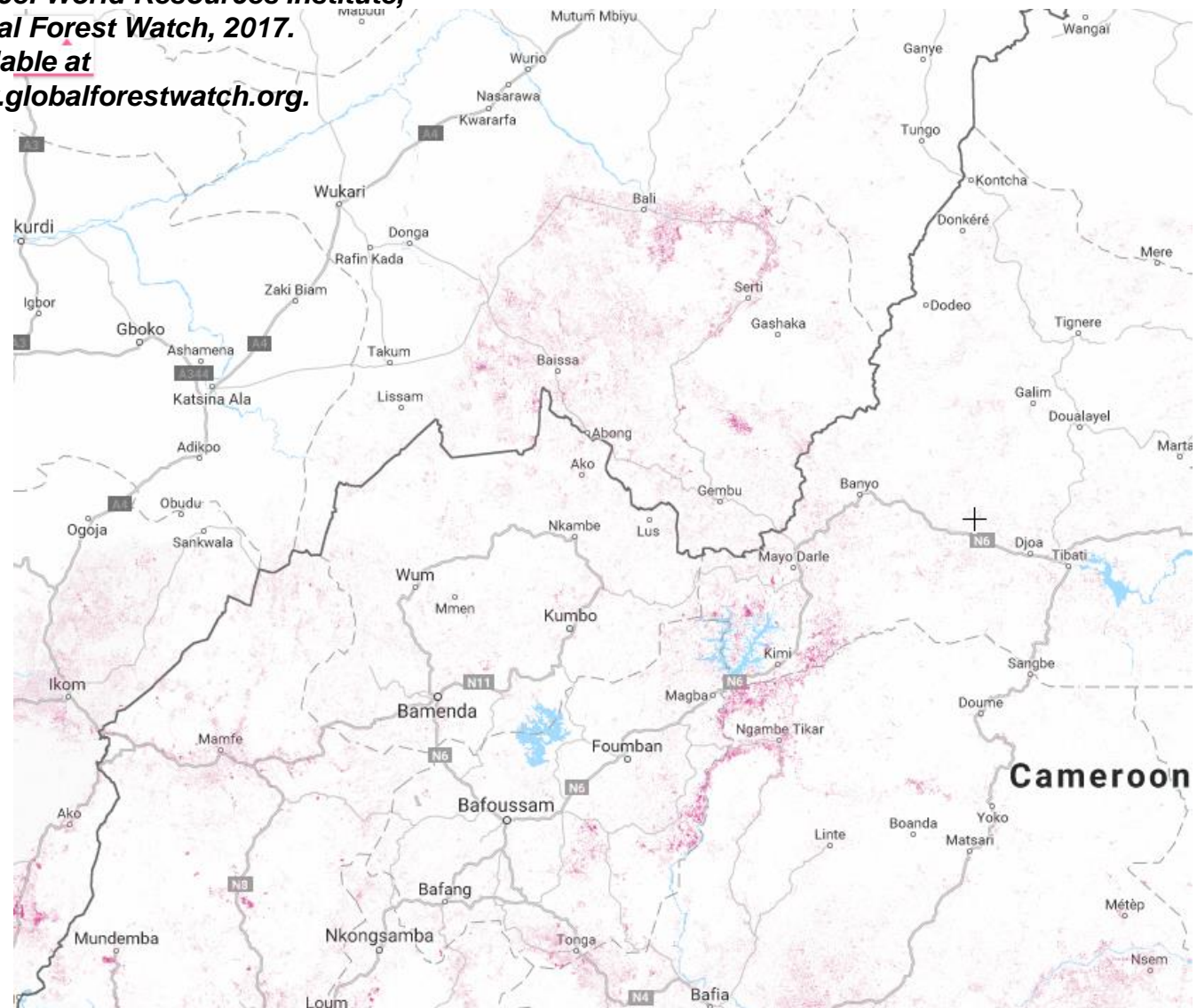
**FOREST  
TRENDS**



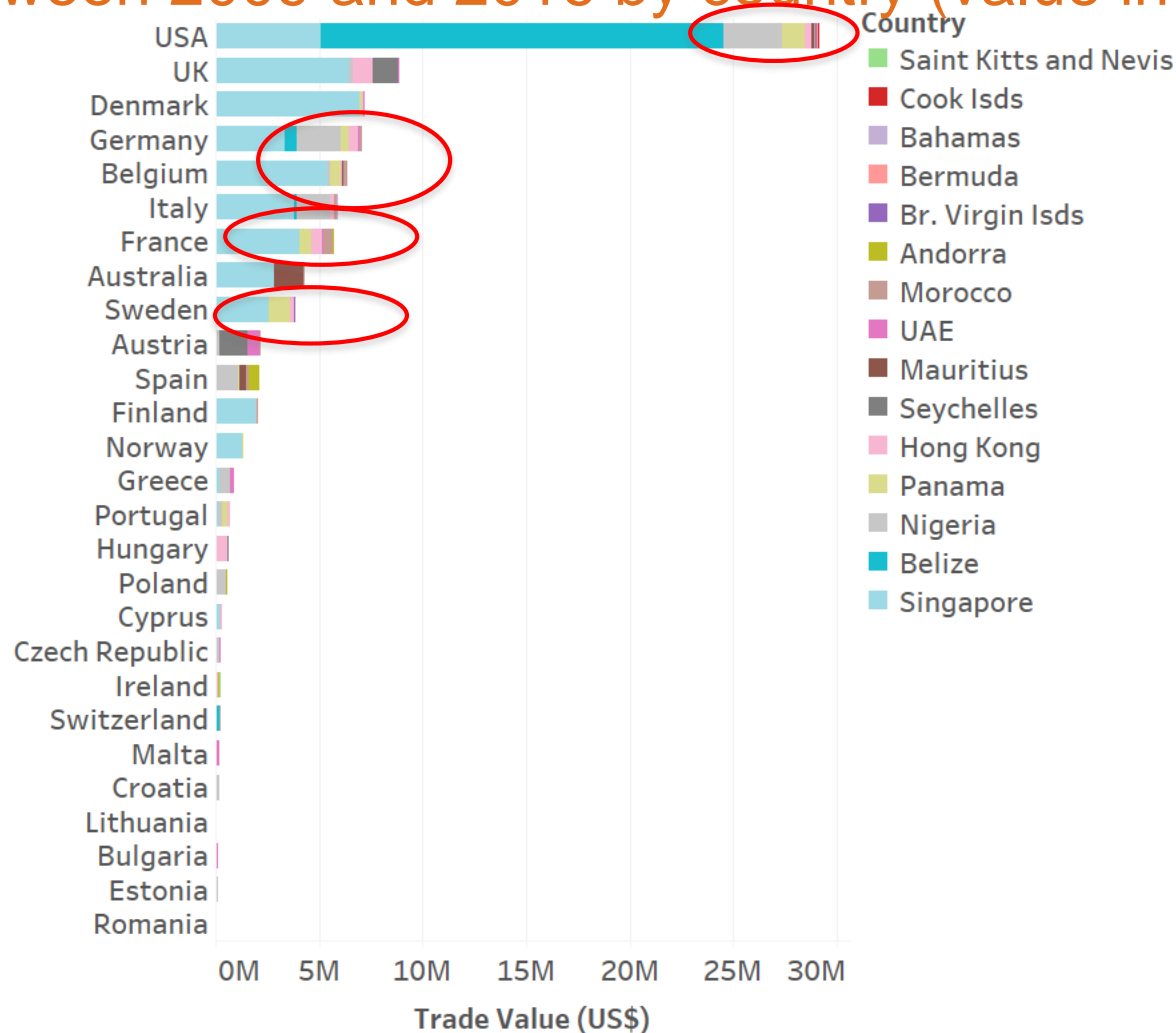
Source: World Resources Institute,  
Global Forest Watch, 2017. Available  
at [www.globalforestwatch.org](http://www.globalforestwatch.org).



**Source: World Resources Institute,  
Global Forest Watch, 2017.  
Available at  
[www.globalforestwatch.org](http://www.globalforestwatch.org).**

FOREST  
TRENDS

# Regulated market imports of logs and sawn wood between 2009 and 2016 by country (value in USD)



Source: Data from UN Comtrade, 2017. Compiled by Forest Trends, 2017



FOREST  
TRENDS

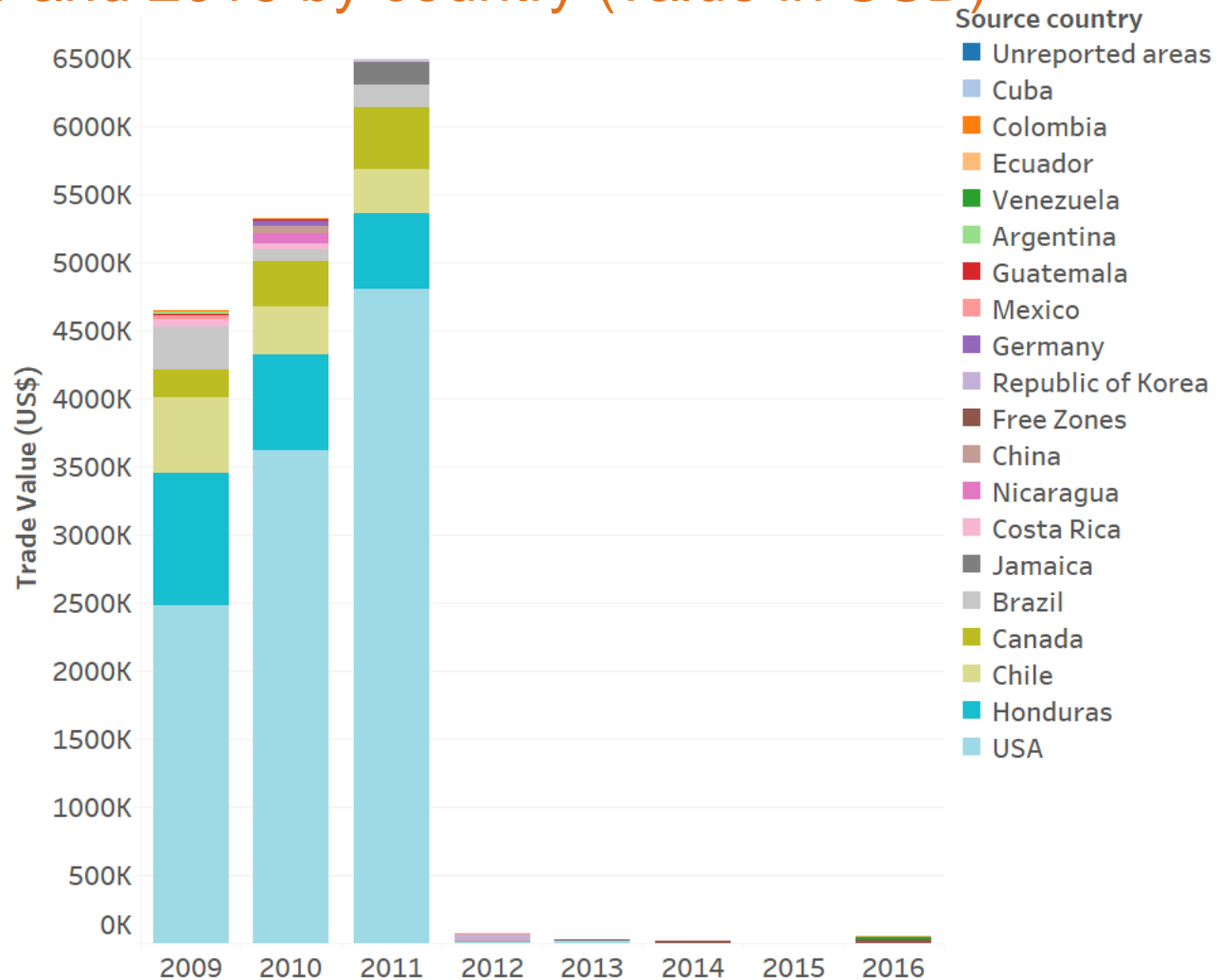


**FOREST  
TRENDS**



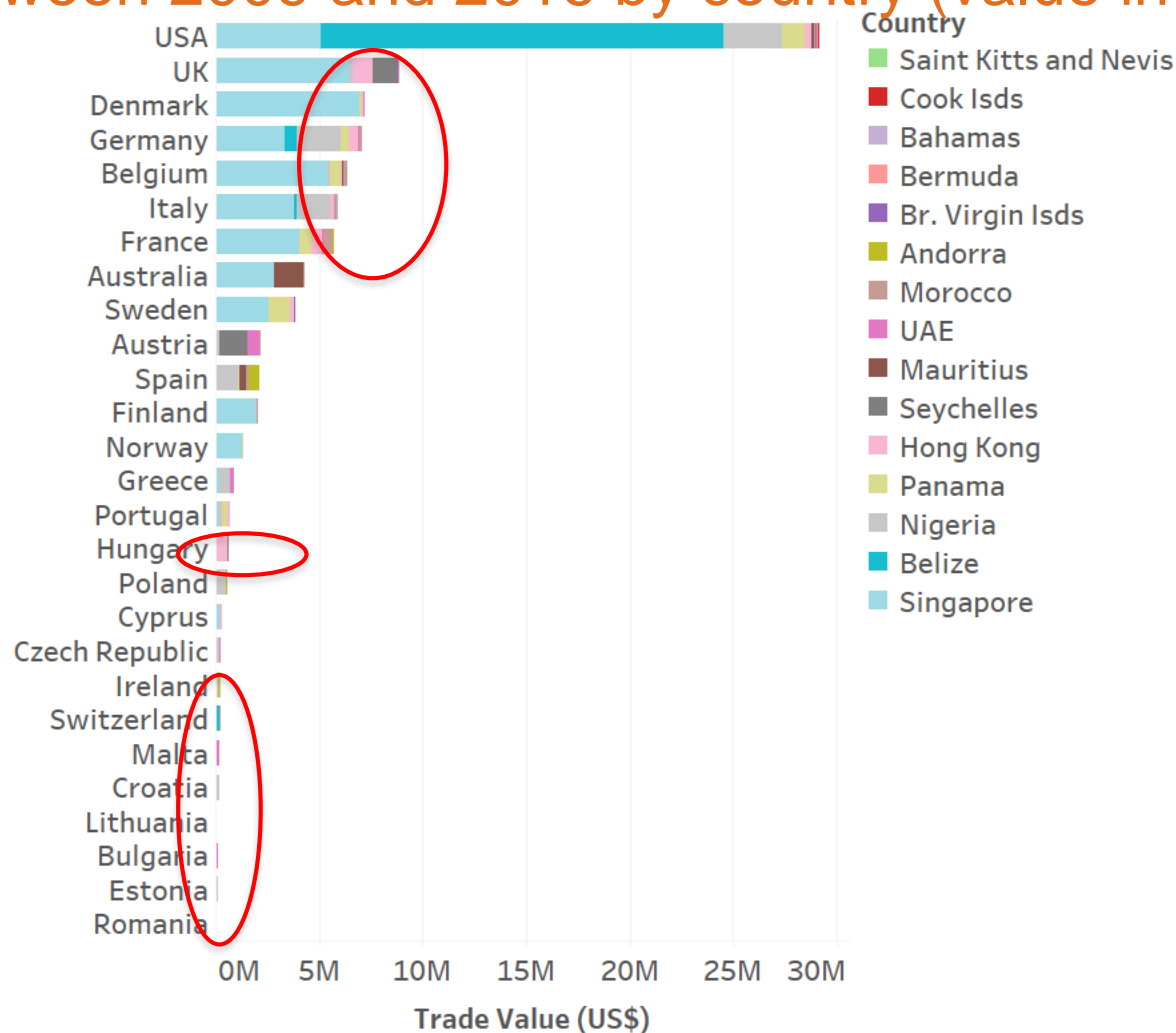
*Source: World Resources Institute,  
Global Forest Watch, 2017. Available  
at [www.globalforestwatch.org](http://www.globalforestwatch.org).*

# Panama's imports of logs and sawn wood between 2009 and 2016 by country (value in USD)



Source: Data from UN Comtrade, 2017. Compiled by Forest Trends, 2017

# Regulated market imports of logs and sawn wood between 2009 and 2016 by country (value in USD)



Source: Data from UN Comtrade, 2017. Compiled by Forest Trends, 2017



FOREST  
TRENDS



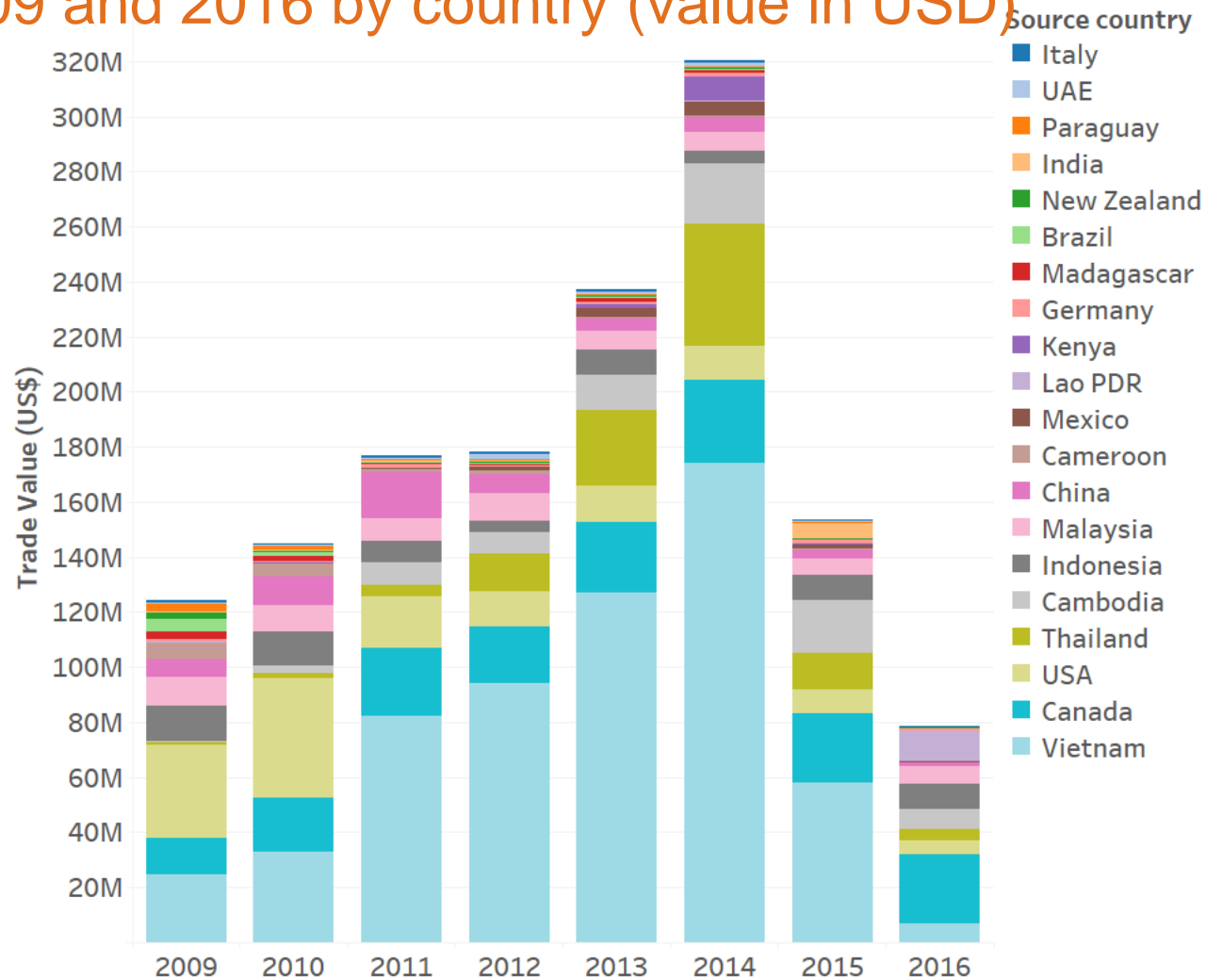


FOREST  
TRENDS



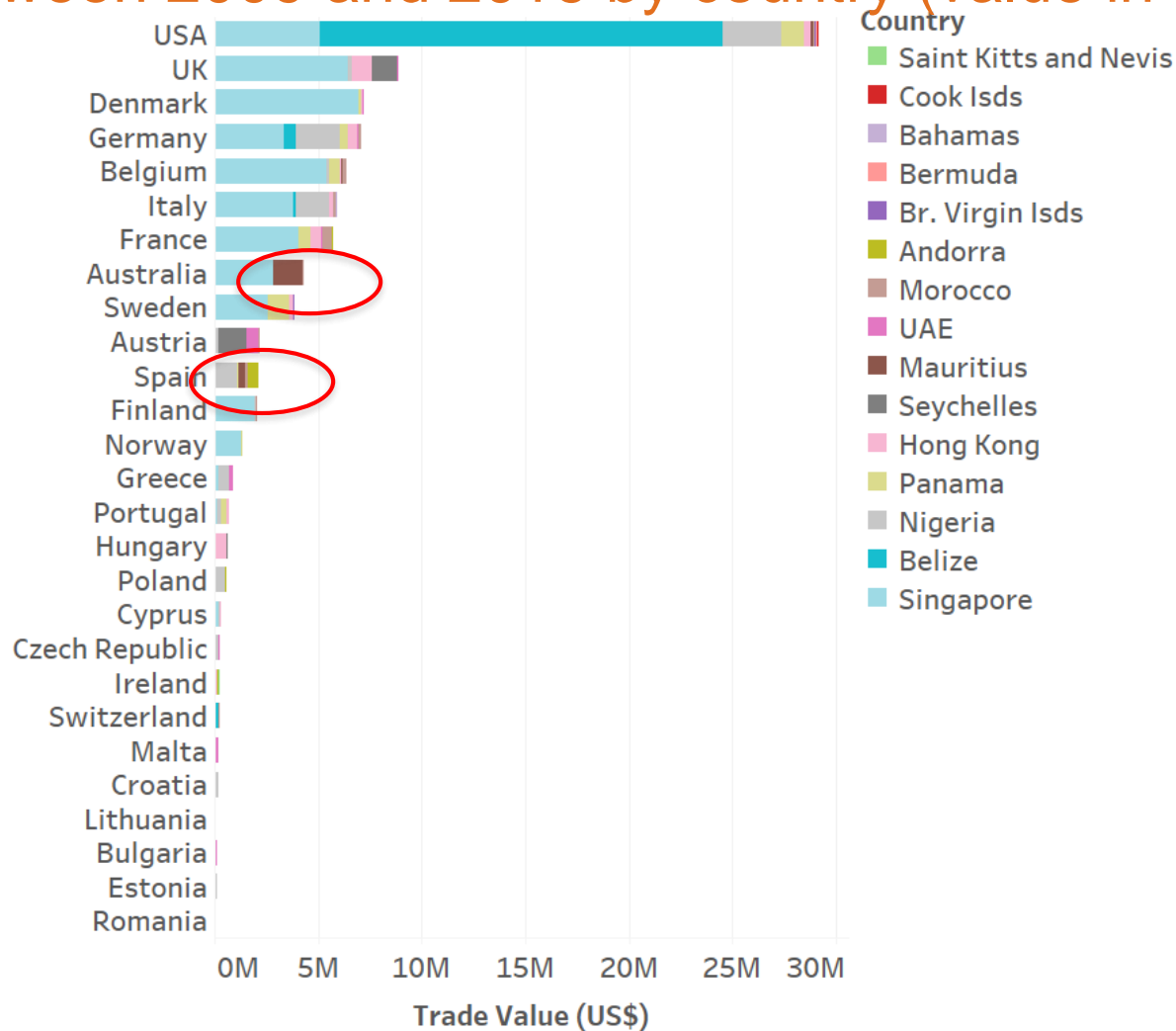
Source: World Resources Institute,  
Global Forest Watch, 2017. Available  
at [www.globalforestwatch.org](http://www.globalforestwatch.org).

# Hong Kong's imports of logs and sawn wood between 2009 and 2016 by country (value in USD)



Source: Data from UN Comtrade, 2017. Compiled by Forest Trends, 2017

# Regulated market imports of logs and sawn wood between 2009 and 2016 by country (value in USD)



Source: Data from UN Comtrade, 2017. Compiled by Forest Trends, 2017



FOREST  
TRENDS

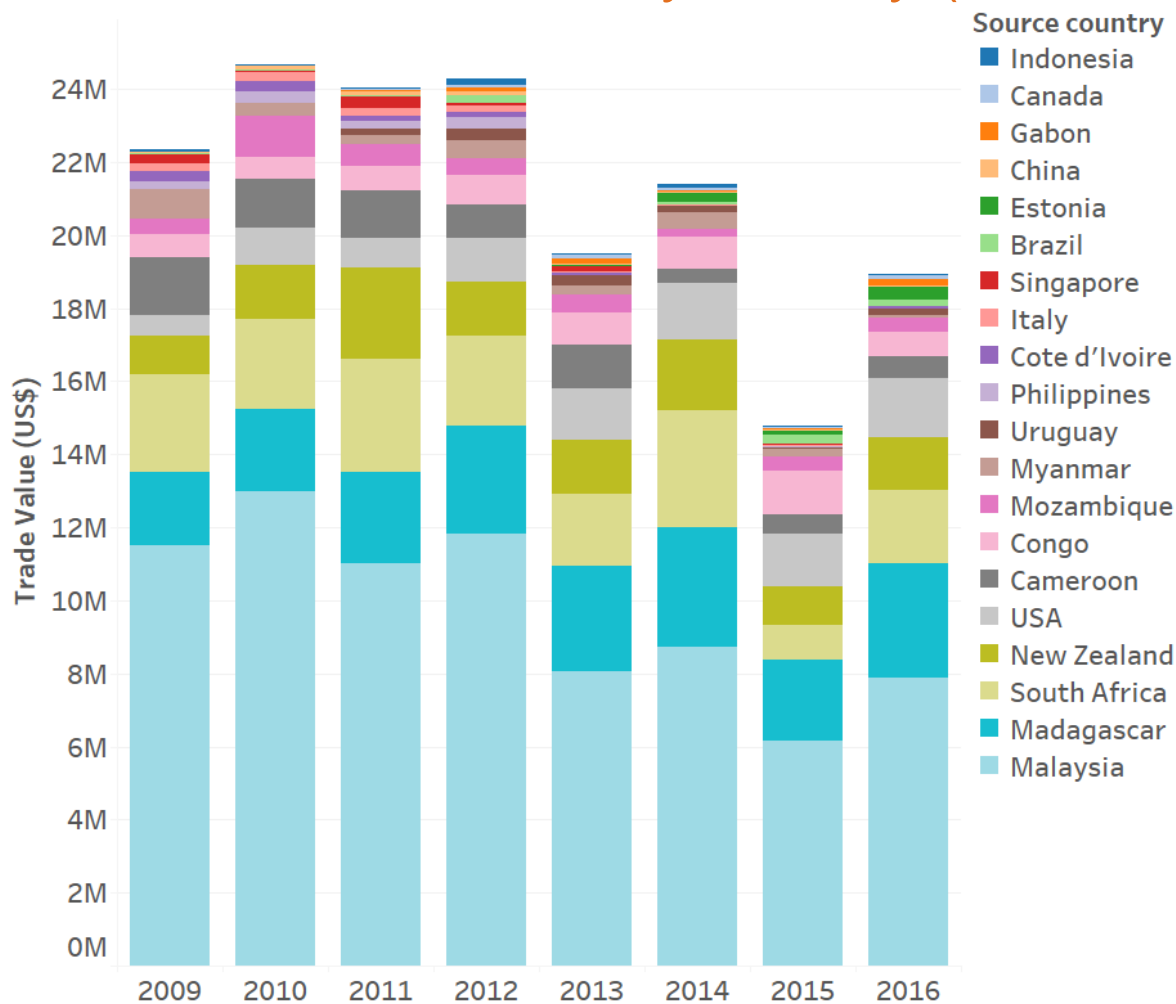


Source: World Resources Institute,  
Global Forest Watch, 2017. Available  
at [www.globalforestwatch.org](http://www.globalforestwatch.org).



**FOREST  
TRENDS**

# Log and sawn wood imports into the Seychelles between 2009 and 2016 by country (value in USD)

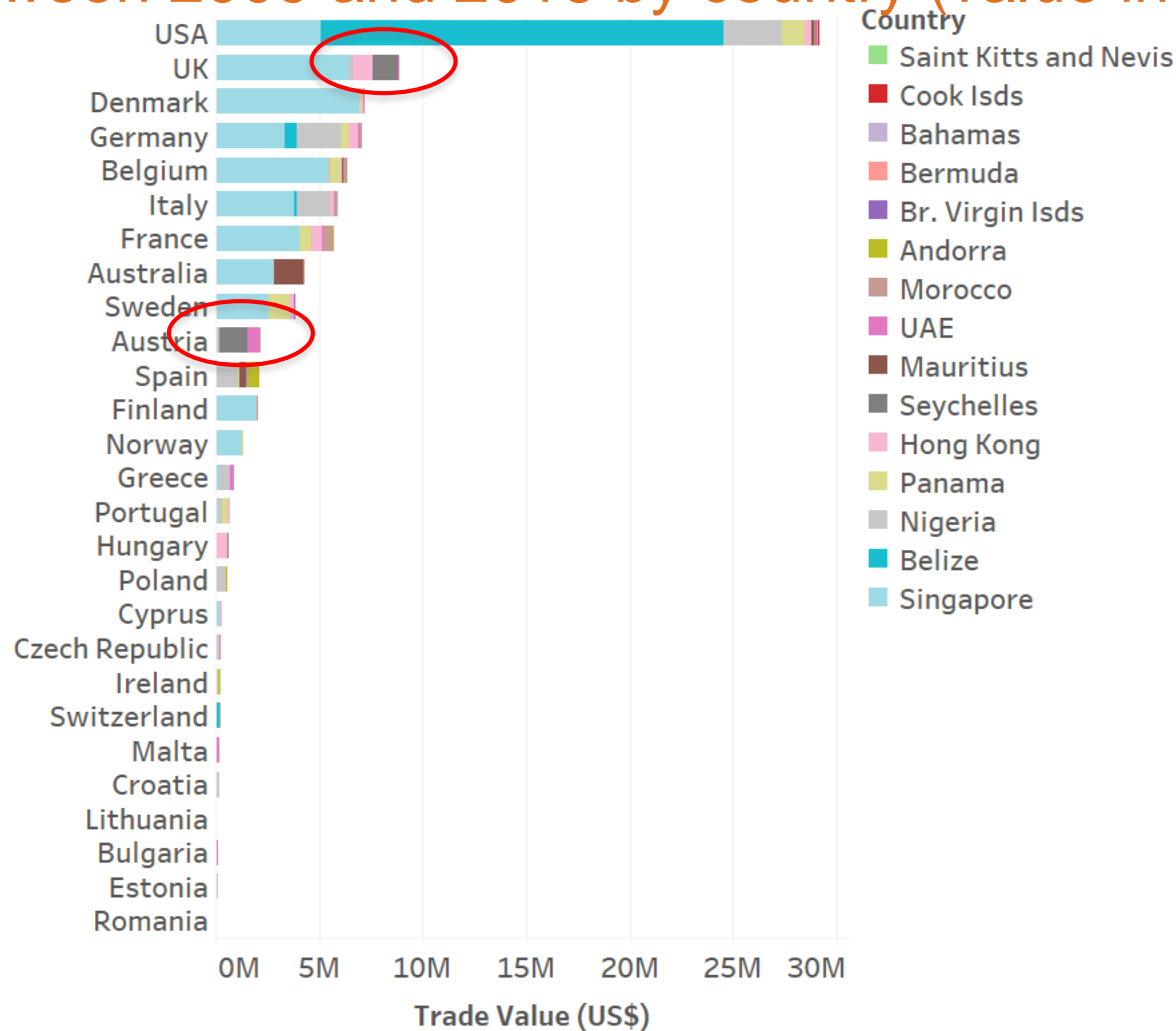


Source: Data from UN Comtrade, 2017. Compiled by Forest Trends, 2017



FOREST  
TRENDS

# Regulated market imports of logs and sawn wood between 2009 and 2016 by country (value in USD)



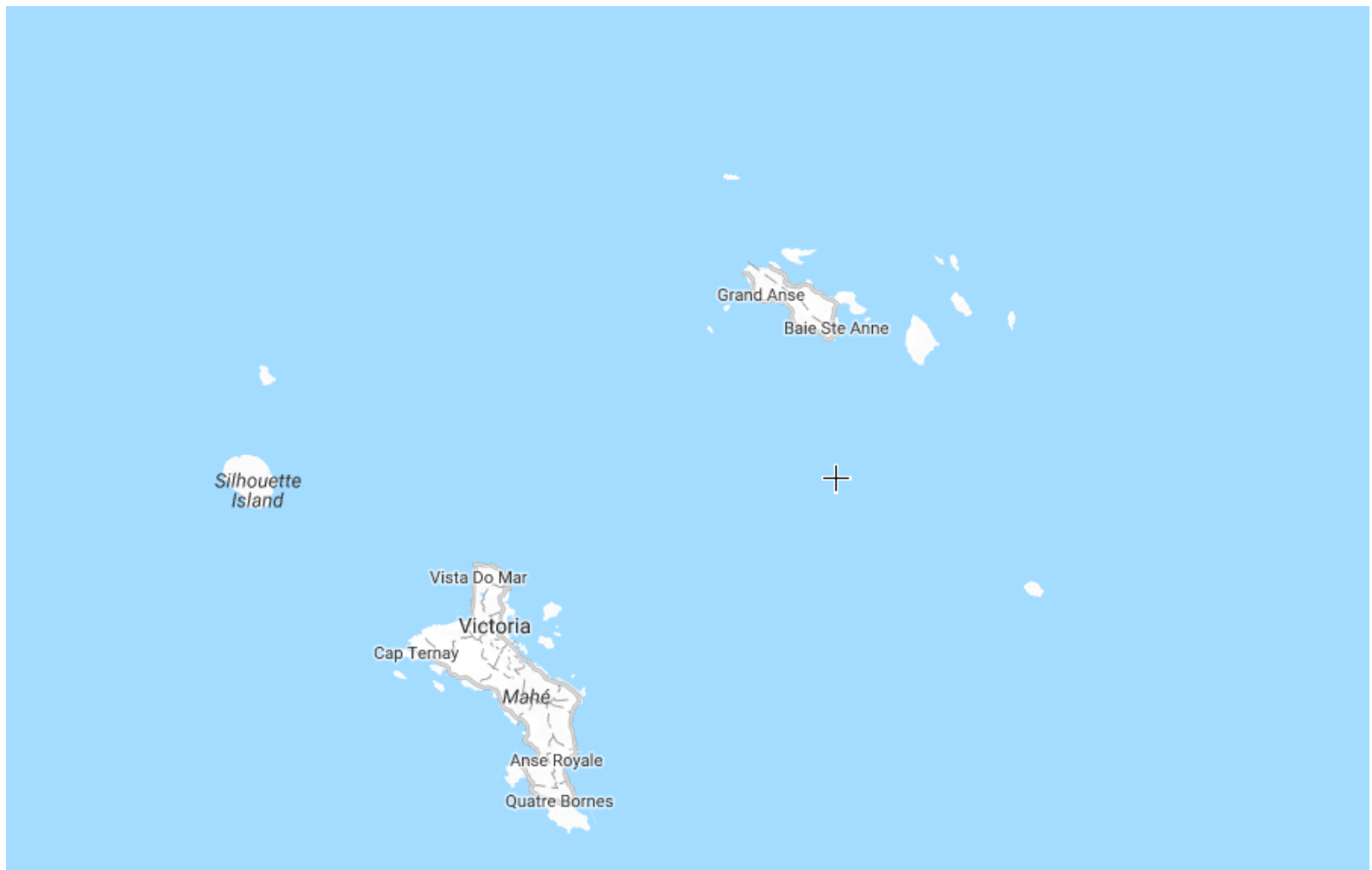
Source: Data from UN Comtrade, 2017. Compiled by Forest Trends, 2017



FOREST  
TRENDS

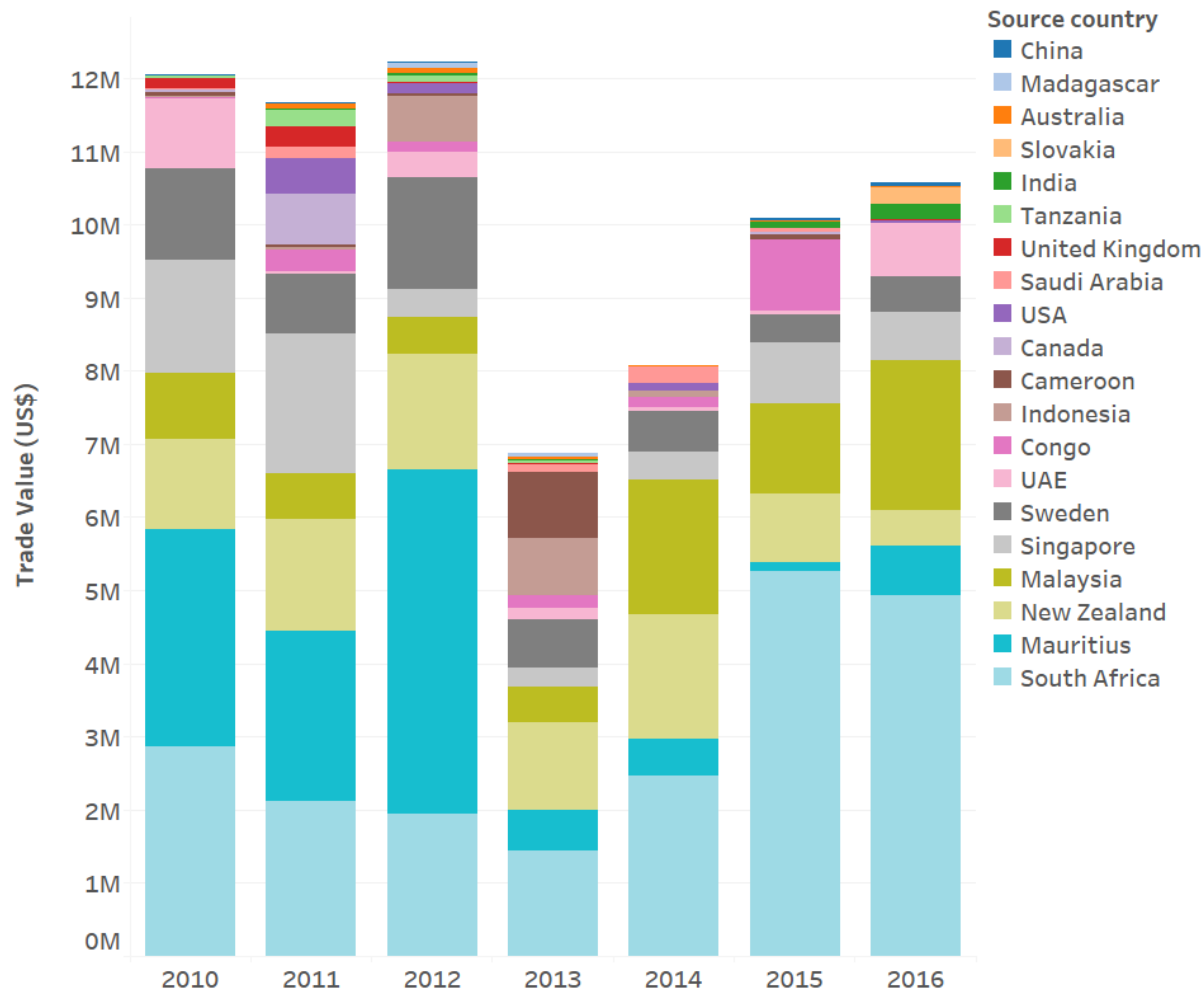


**FOREST  
TRENDS**



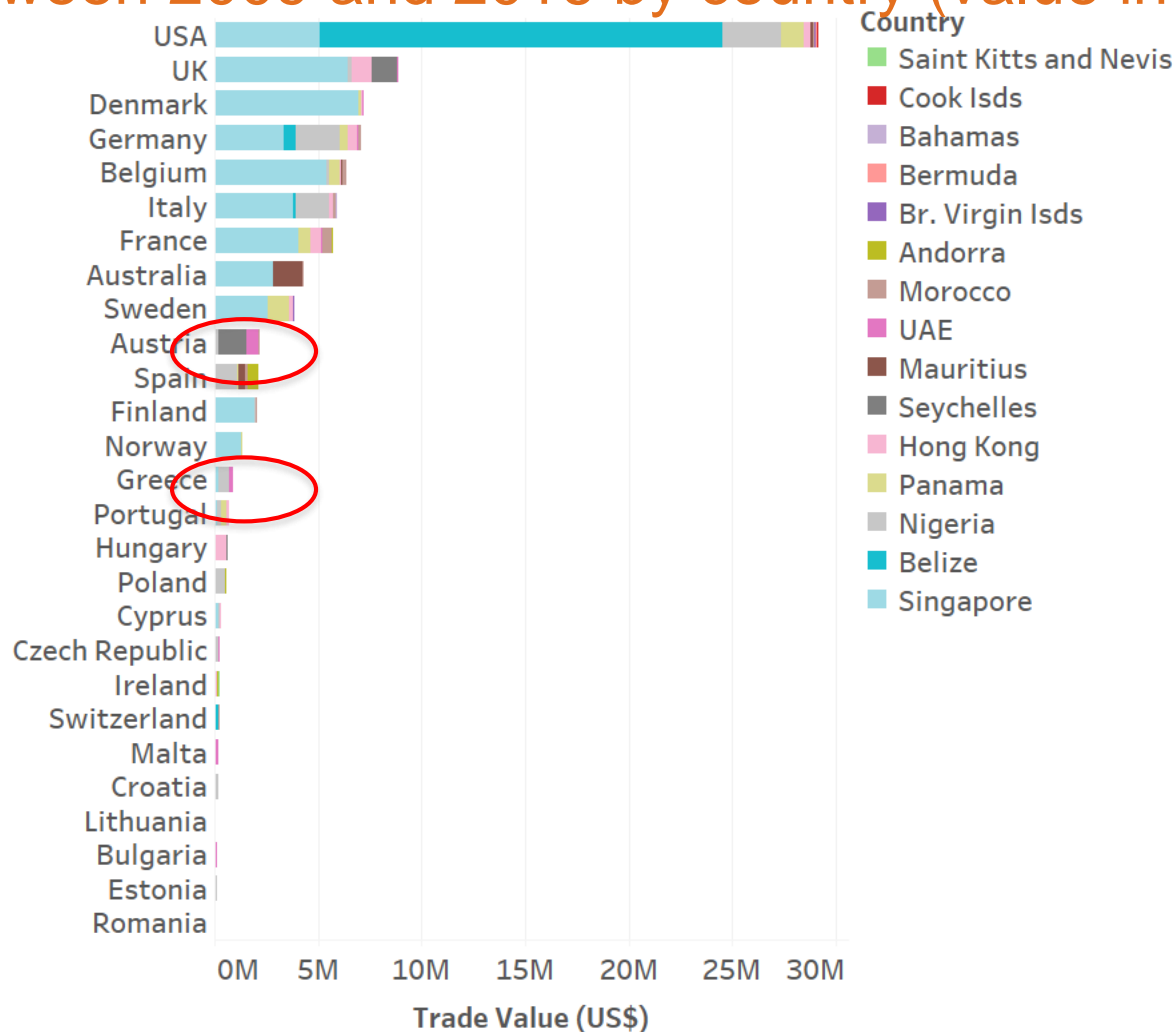
*Source: World Resources Institute,  
Global Forest Watch, 2017. Available  
at [www.globalforestwatch.org](http://www.globalforestwatch.org).*

# Log and sawn wood imports into the Seychelles between 2009 and 2016 by country (value in USD)



Source: Data from UN Comtrade, 2017. Compiled by Forest Trends, 2017

# Regulated market imports of logs and sawn wood between 2009 and 2016 by country (value in USD)



Source: Data from UN Comtrade, 2017. Compiled by Forest Trends, 2017

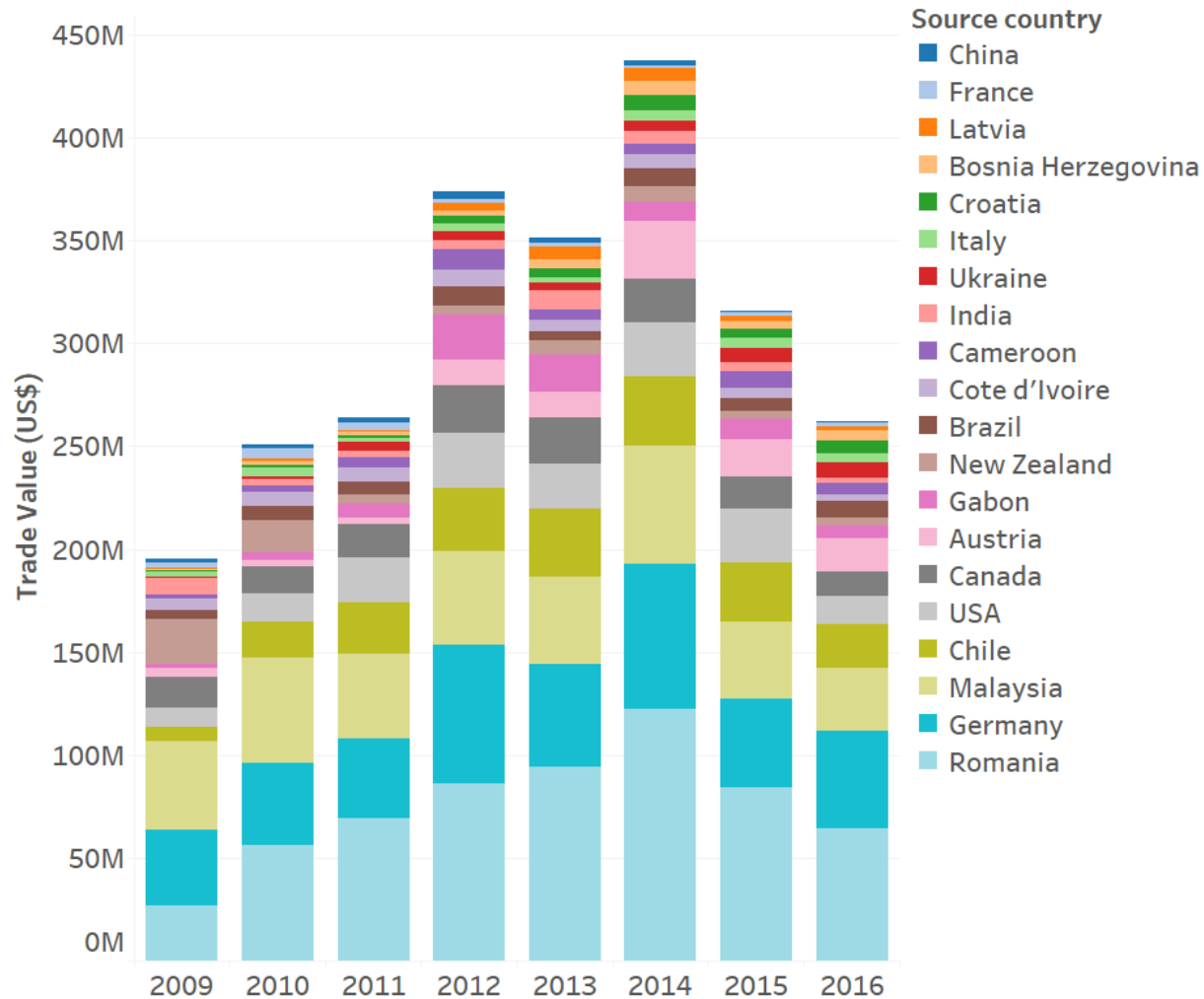


FOREST  
TRENDS

Source: World Resources Institute, Global Forest Watch, 2017. Available at [www.globalforestwatch.org](http://www.globalforestwatch.org).



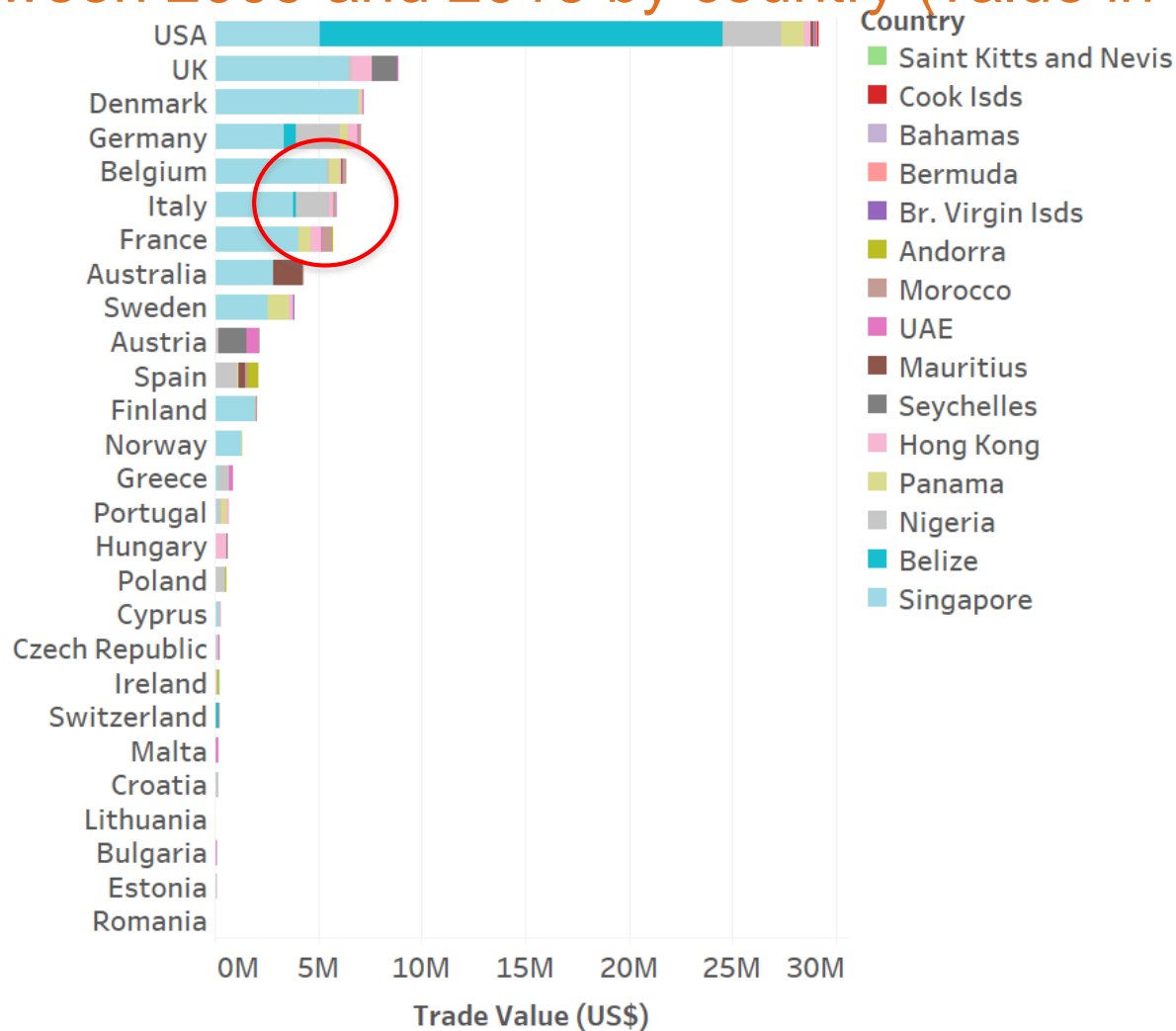
# UAE imports of logs and sawn wood between 2009 and 2016 by country (value in USD)



Source: Data from UN Comtrade, 2017. Compiled by Forest Trends, 2017



# Regulated market imports of logs and sawn wood between 2009 and 2016 by country (value in USD)

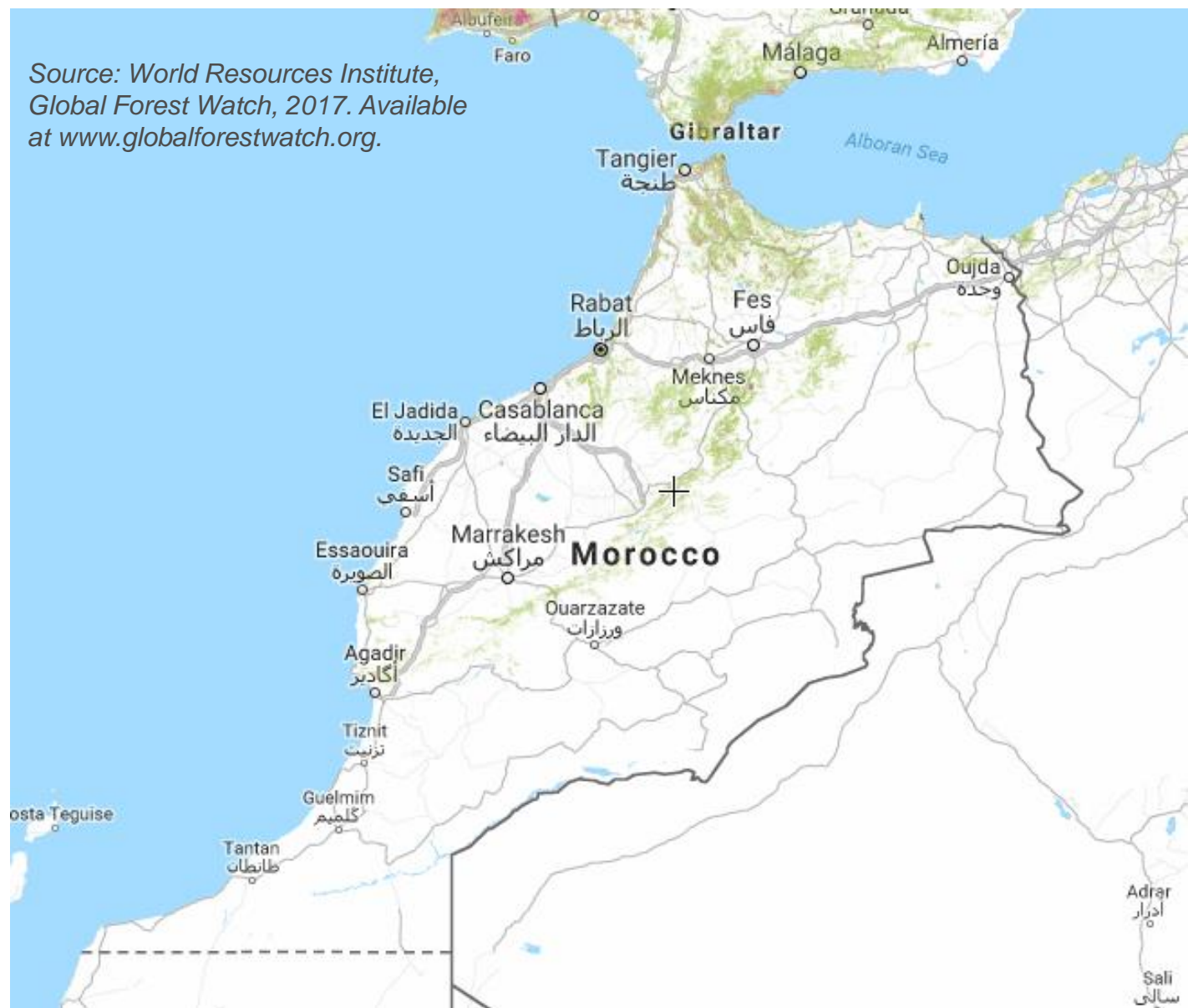


Source: Data from UN Comtrade, 2017. Compiled by Forest Trends, 2017



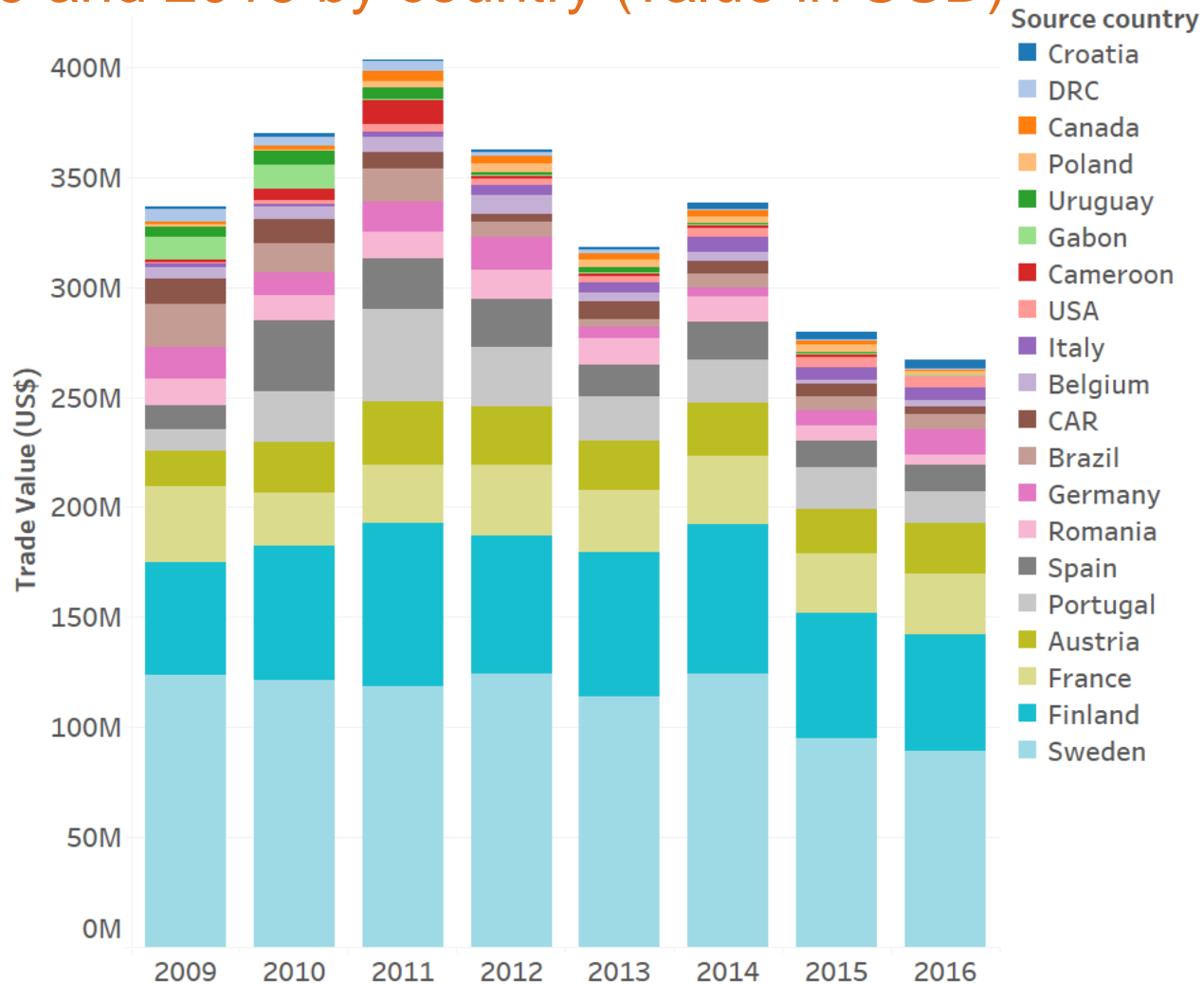
FOREST  
TRENDS

Source: World Resources Institute,  
Global Forest Watch, 2017. Available  
at [www.globalforestwatch.org](http://www.globalforestwatch.org).



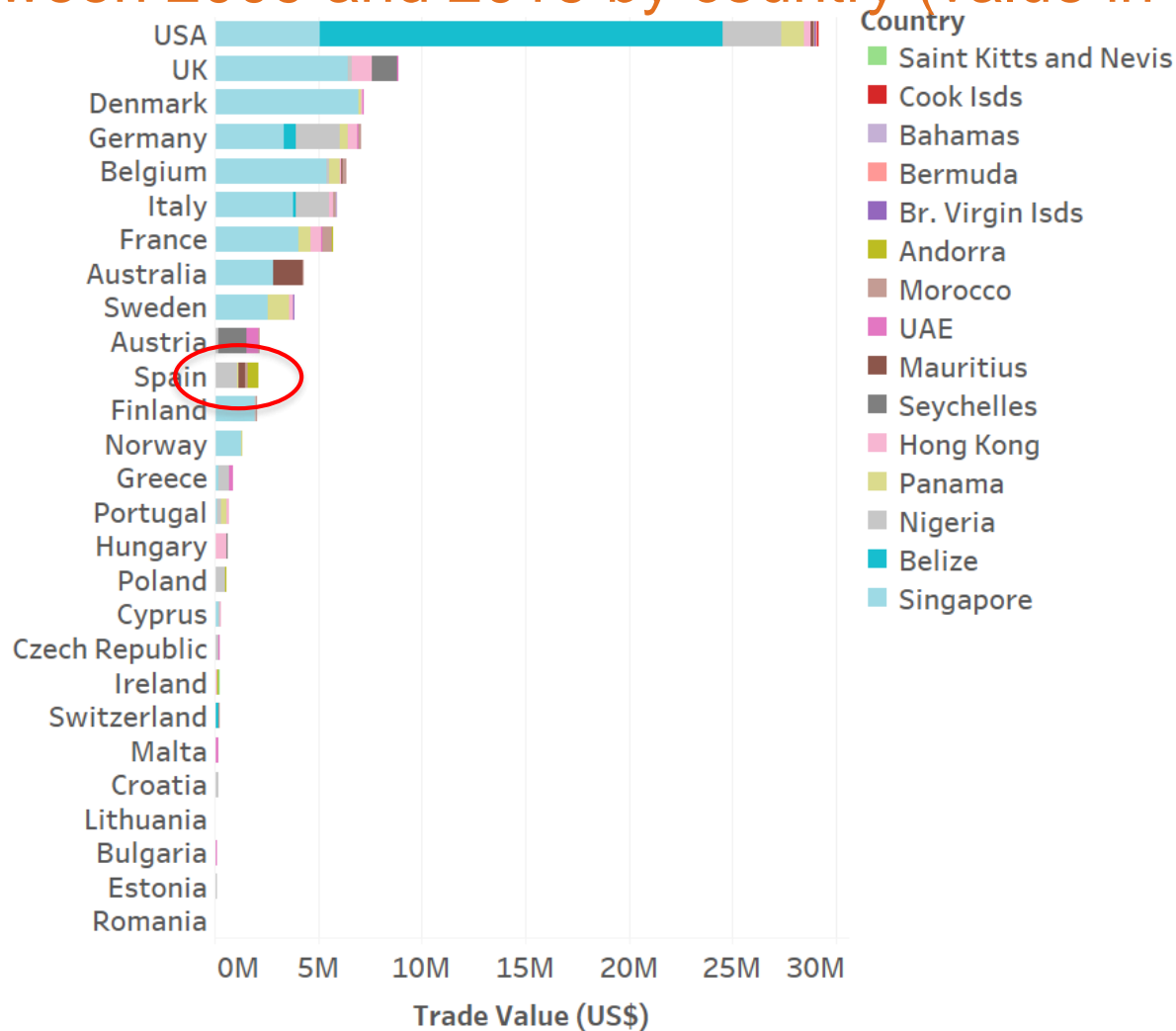
**FOREST  
TRENDS**

# Morocco's imports of logs and sawn wood between 2009 and 2016 by country (value in USD)



Source: Data from UN Comtrade, 2017. Compiled by Forest Trends, 2017

# Regulated market imports of logs and sawn wood between 2009 and 2016 by country (value in USD)



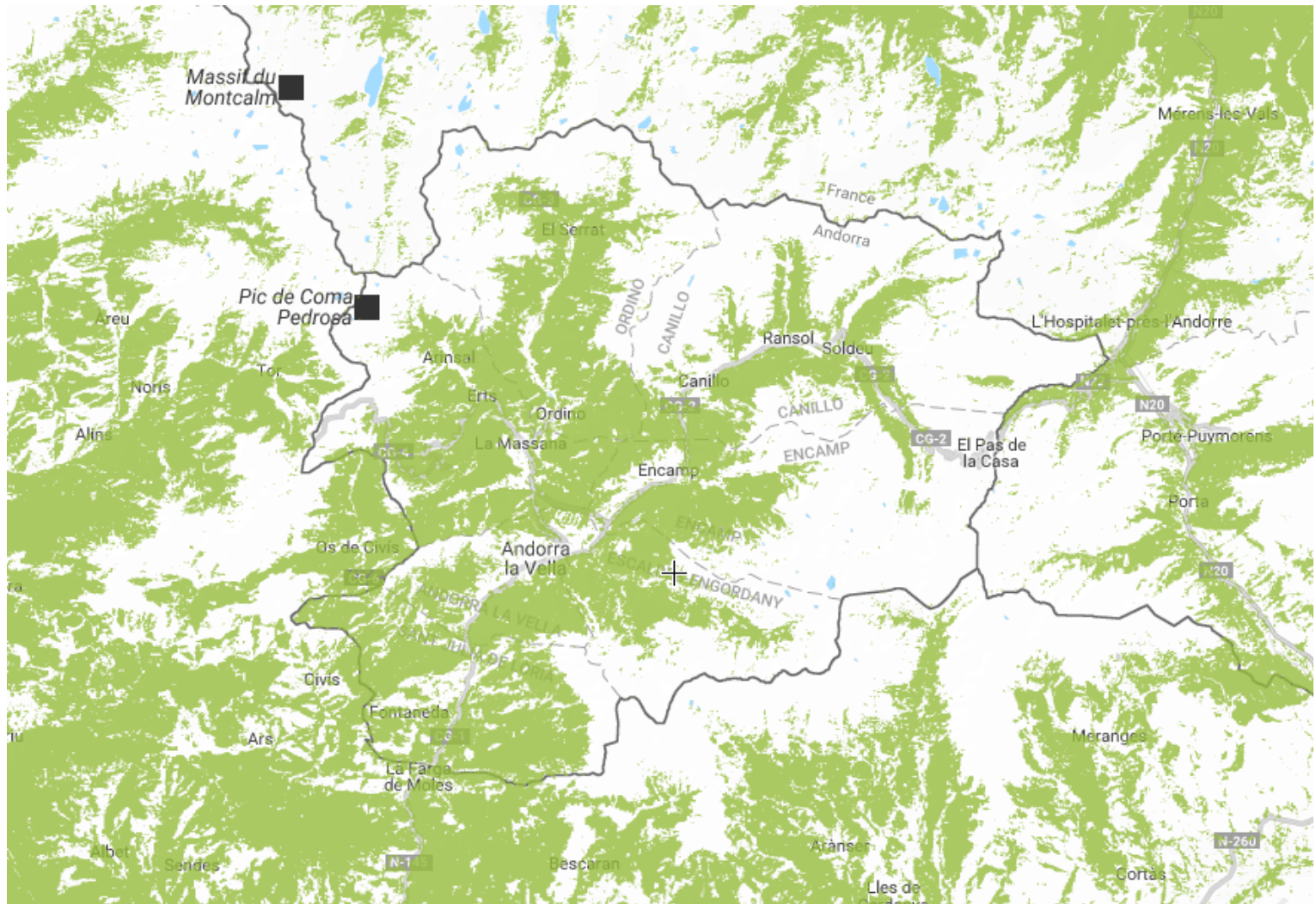
Source: Data from UN Comtrade, 2017. Compiled by Forest Trends, 2017



FOREST  
TRENDS

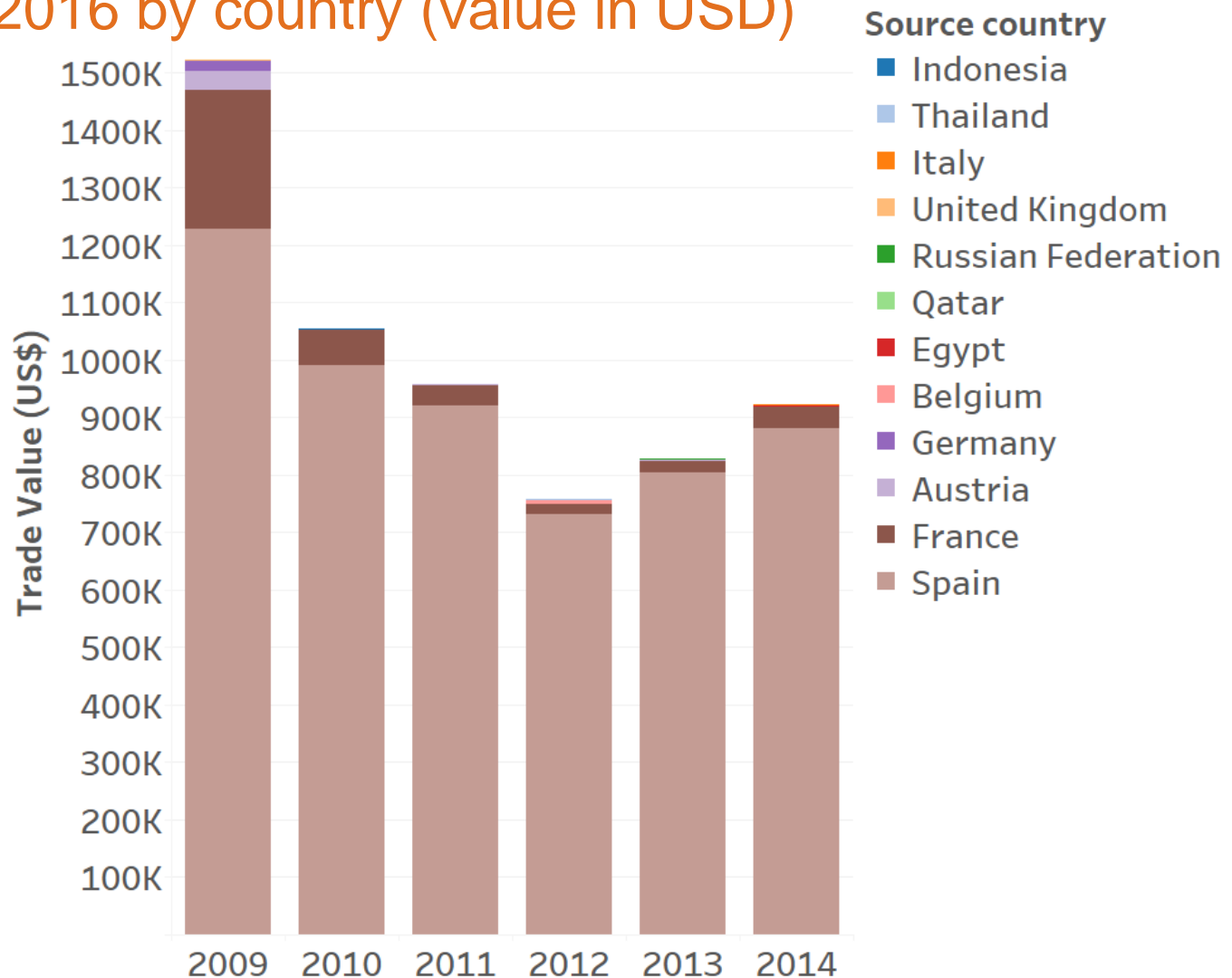


**FOREST  
TRENDS**



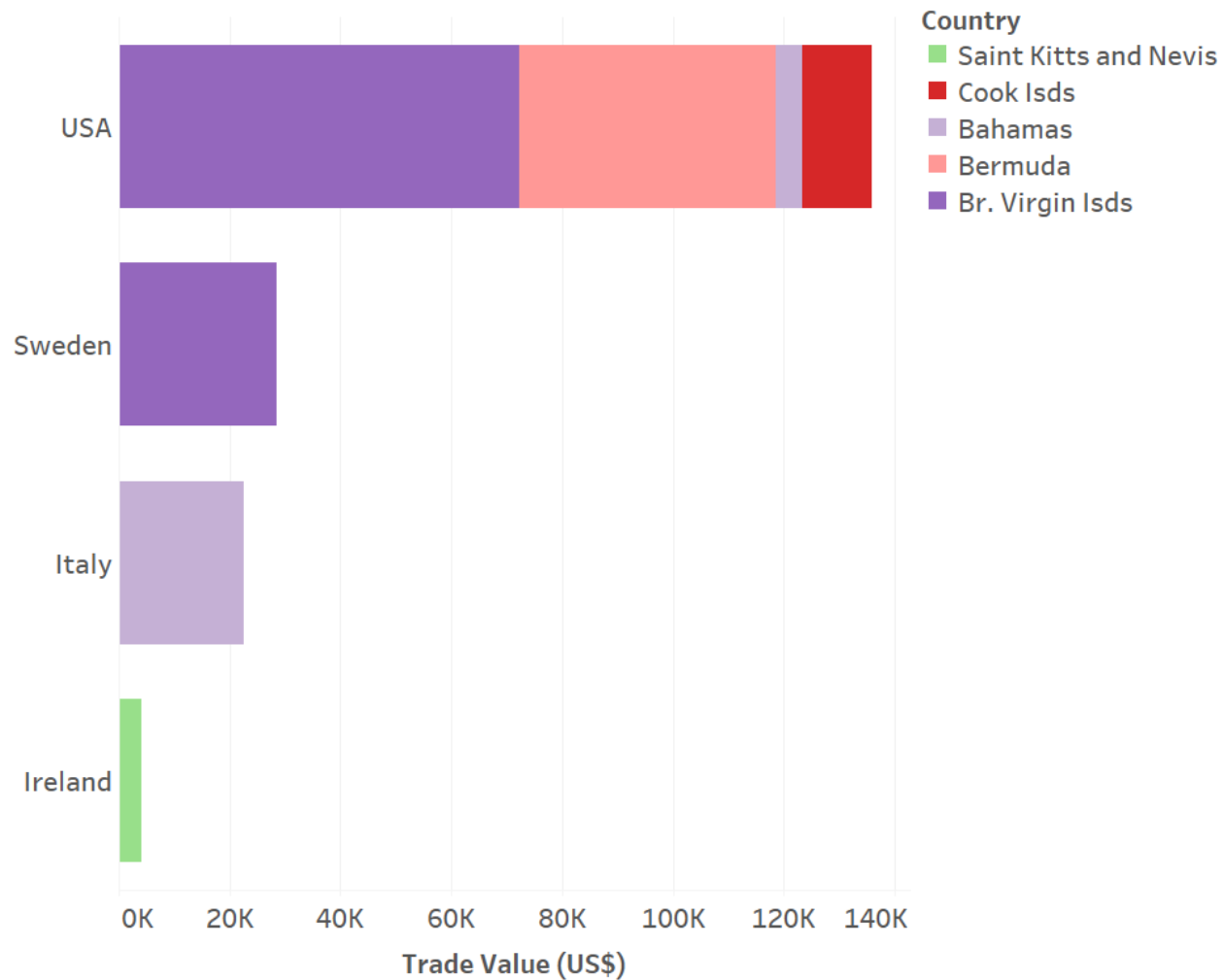
Source: World Resources Institute,  
Global Forest Watch, 2017. Available  
at [www.globalforestwatch.org](http://www.globalforestwatch.org).

# Andorra's imports of logs and sawn wood between 2009 and 2016 by country (value in USD)



Source: Data from UN Comtrade, 2017. Compiled by Forest Trends, 2017

## Regulated market imports of logs and sawn wood between 2009 and 2016 by country (value in USD)

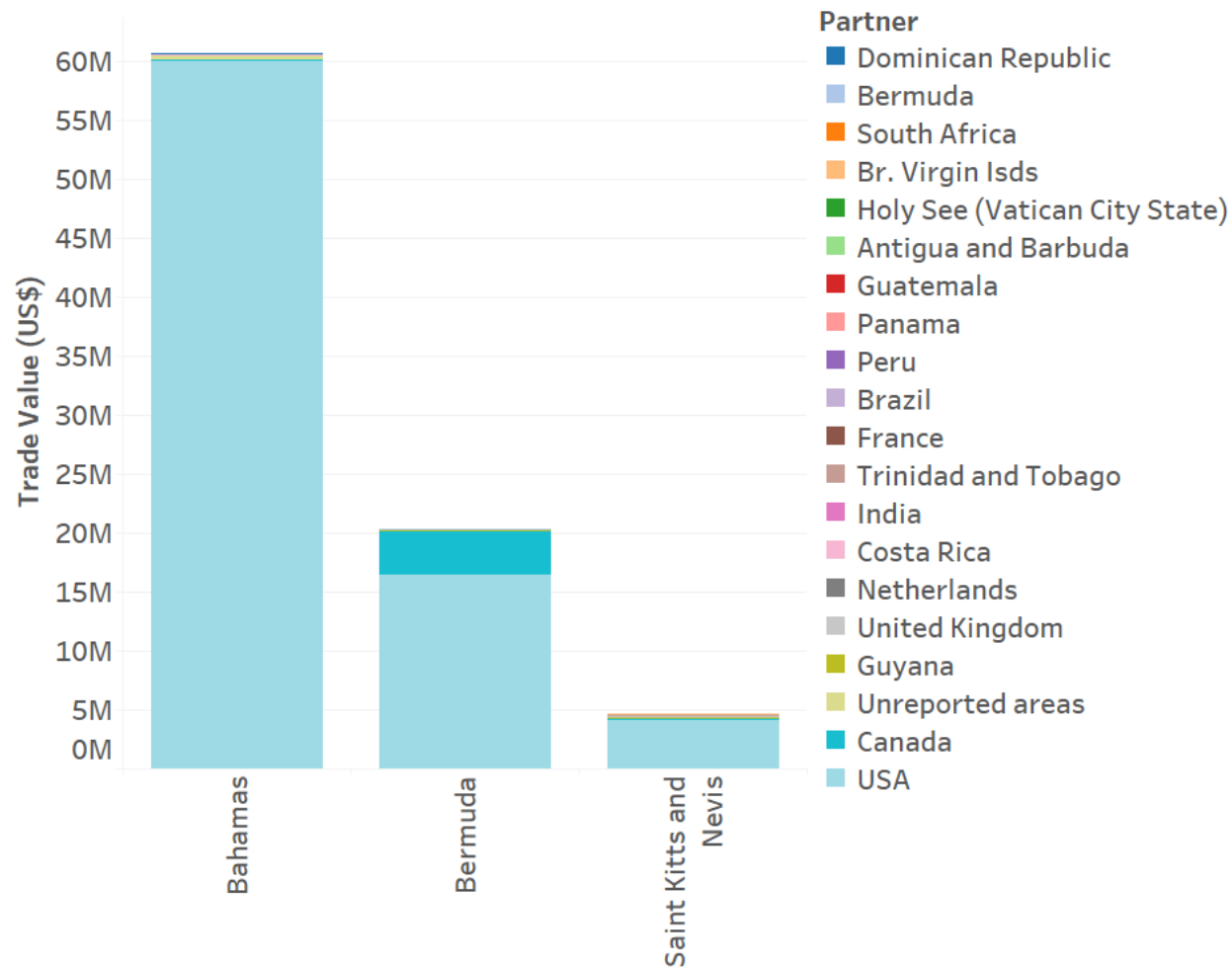


Source: Data from UN Comtrade, 2017. Compiled by Forest Trends, 2017



FOREST  
TRENDS

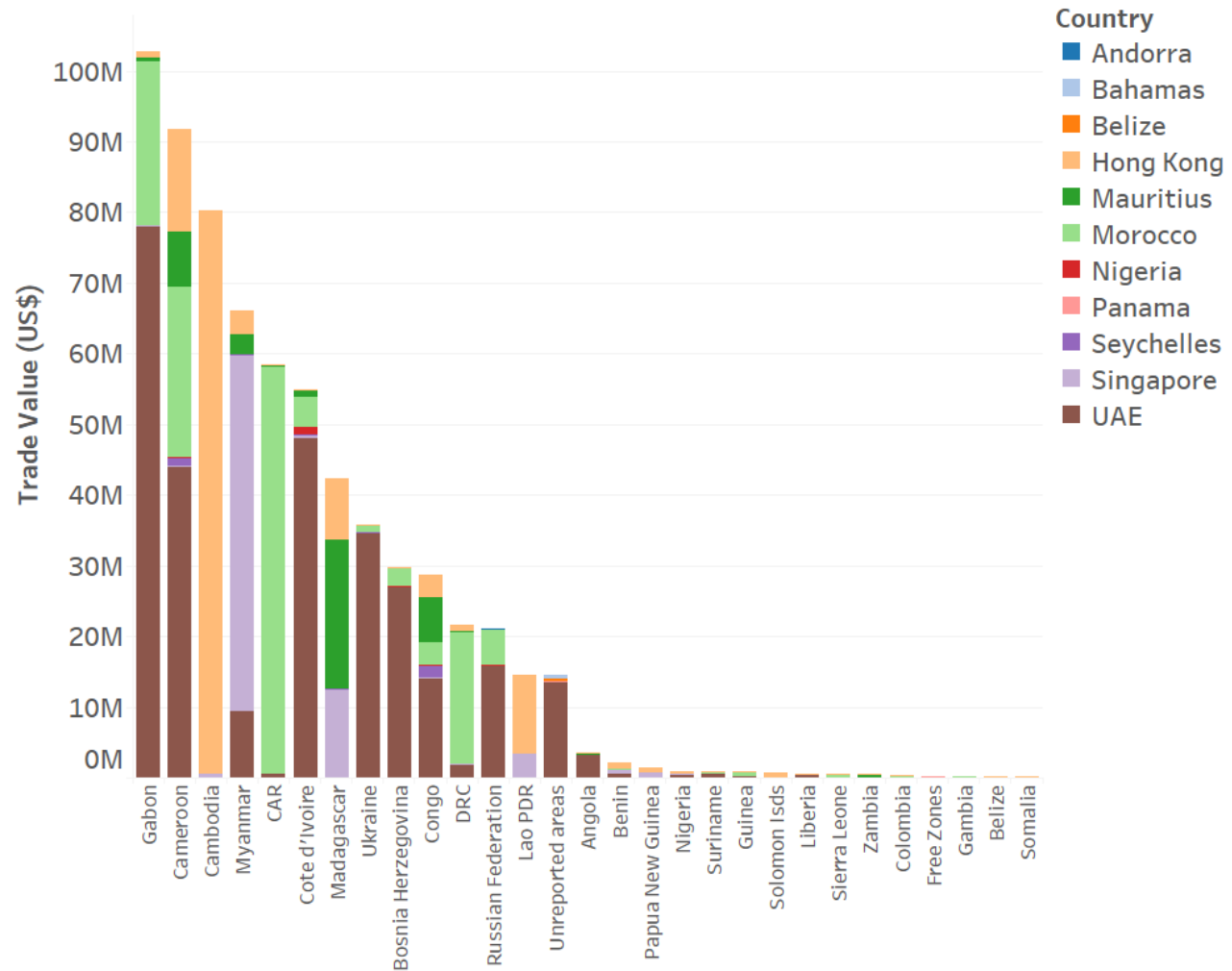
# Imports of logs and sawn wood between 2009 and 2016 by country (value in USD)



Source: Data from UN Comtrade, 2017. Compiled by Forest Trends, 2017



# Higher-risk source countries for logs and sawn wood 2009-2016 (value in USD)



Source: Data from UN Comtrade, 2017. Compiled by Forest Trends, 2017