



FAO- EU FLEGT Programme

IMPROVING AND VALUATING TIMBER TRACEABILITY
SYSTEMS USING MOBILE TECHNOLOGIES

Presented by J. Soh Ndeh

GFBC profile



**Groupement
de la Filière Bois
au Cameroun**

The **GFBC** is the Cameroon Wood industry body

Its members represent 75 % of the turnover of this business sector.

It intends to defend the interests of its members and represent them everywhere it turns out useful.

These last years, the GFBC put a lot to support its members on the way of certification and responsible forest management.

The Project Background

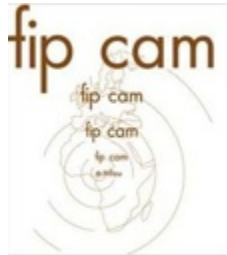


The **GFBC** initiates the project regarding :

- ❖ legality and traceability requirements
- ❖ hardness and numerous errors related to manual data recording
- ❖ difficulties for its members to justify the origin, even the legality of their supplies

So, It decided to bring sustainable and reliable solutions with the support of EU
FAO

The Project Background



The selection of four wood traders for the experimental phase.

The logging companies have been chosen based on the fact that:

□ they were all using an online traceability system named **PALLITRACKS**

- ❖ owing a centralized database
- ❖ web-based system

Timber Traceability and Mobile Technologies



Logs labelling in FIPCAM at Mfou (Yaounde)

The main objective:

Improve and value timber traceability using mobile technologies by:

- ▶ Providing Smartphone applications to record information in the field (even out of range)
- ▶ Improving the communication on forestry traceability by connecting the customer with the trader via a website

Timber Traceability and Mobile Technologies



More information on SIGIF Can be found here <http://www.minfoc.cm/>

Besides, the initiative will allow to constitute a database which will be tipped over in the **SIGIF 2** at the time of its deployment.

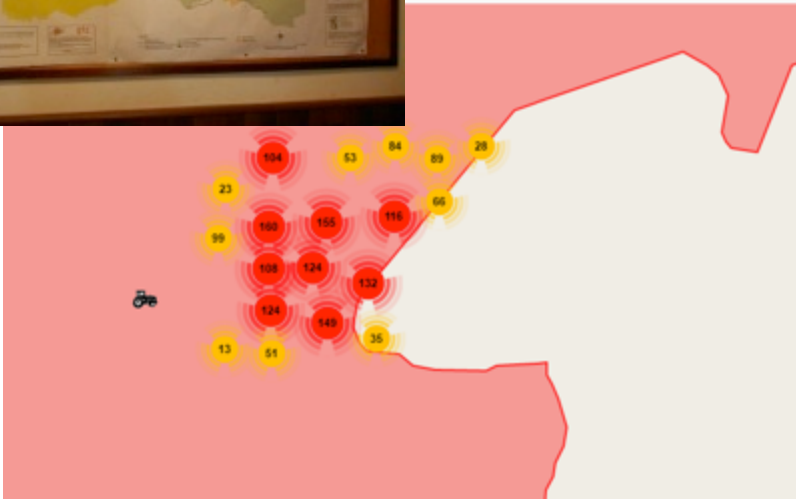
SIGIF 2 is the government project part of the FLEGT program to centralize all wood traders data to fight against illegal exploitation and secure forestry taxes recovery.

Started some few years ago is still under development and is supposed to be completed by the end of this year



Project Achievements

Reliable Tool for Managers



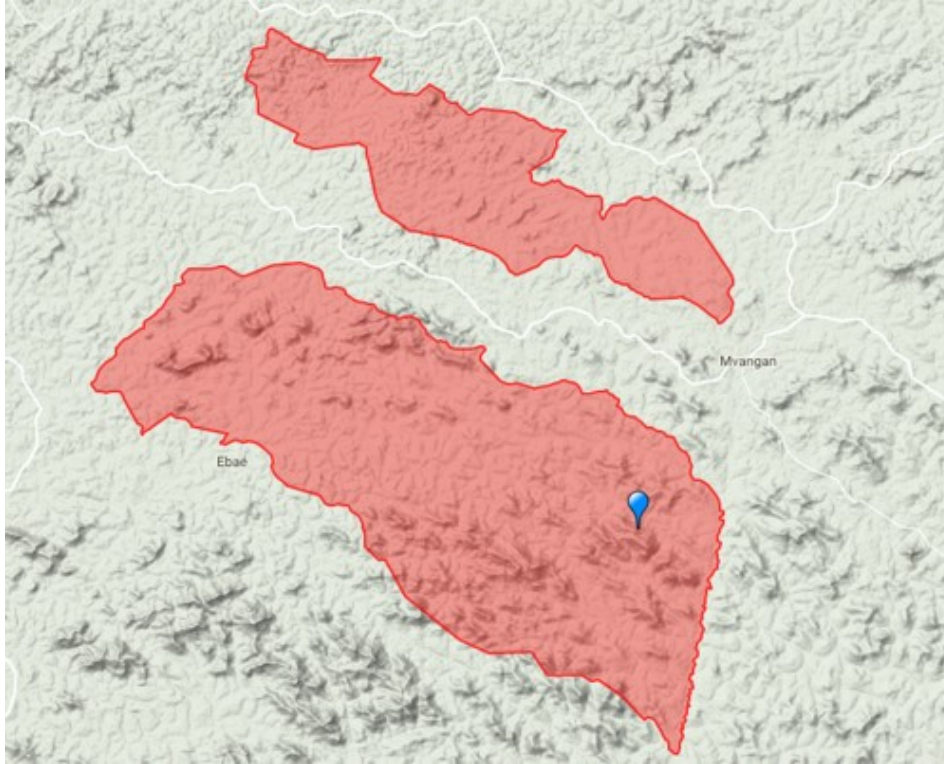
From his office, the manager can see on a map view how exploitation goes on

- Where logs are harvested
- The status of every tree along the harvesting process

This is the a simple tool to insure that his employee do not mismanage the forest.

Map previously used in manager offices compared to the online map used thanks to the FAO project

Reliable Tools for Traders

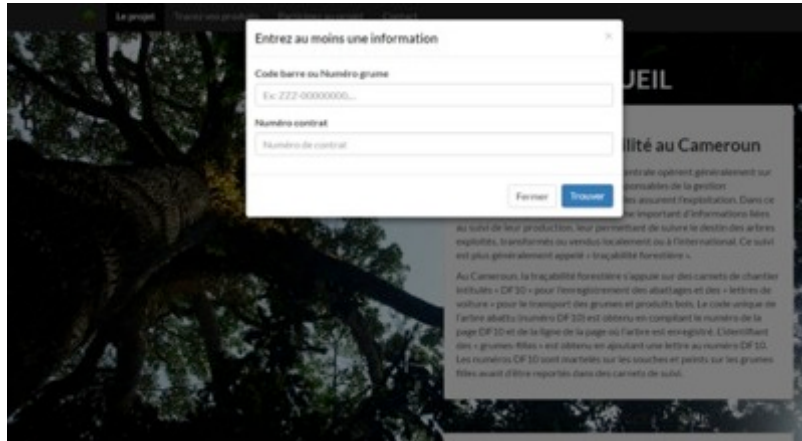


All labelled logs can be tracked on the project website: tracabilite.gfbcam.com

An **online application** on the GFBC website tracabilite.gfbcam.com and a app in Google play

- ❑ to track every tree or log wherever it comes
- ❑ to improve the communication on timber legality and origin
 - ❑ You can check that a log is harvested within the boundaries of the authorized exploitation
 - ❑ You can confirm that traceability is maintain during the exploitation process from inventory to exportation

For EU traders how to check if a log comply with due diligence



The screenshot shows a web browser window with a search form titled "Entrez au moins une information". The form has three input fields: "Code barre ou Numéro grume" (with an example "Ex: 222-00000000..."), "Numéro contrat", and "Numéro de contrat". Below the fields are "Fermer" and "Trouver" buttons. The background of the website shows a forest scene and text about timber traceability in Cameroon.

Method 1 : An **online application** on the GFBC website tracabilite.gfbcam.com

- ❑ Click on “Tracez vos produits bois”
- ❑ In the opened window, type down the barre code of the log or the contract number
- ❑ Click on “Trouver”

Method 2 : On google play

- ❑ Search and download “Geo timber” app on an android phone
- ❑ Whenever you see a log anywhere in the world with a barre code like the one in illustration
- ❑ Scan it and you will see on a map where the original tree was harvested.



Reliable Tools for Customers

The screenshot shows a mobile application interface titled "Réception client". It features several input fields and sliders for logging data: "Numéro de la grume", "Longueur (en m)" with a slider, "Diamètre moyen (en cm)" with a slider, "Poids", "Volume réel", and "Volume commercial". At the bottom, there are three buttons: "Ignorer" (with a red circle containing the number 9), "Prendre la grume" (with a red circle containing the number 10), and "Voir les données" (with a red circle containing the number 11). A summary bar at the bottom displays "Nombre de grumes réceptionnées: n grumes" and "Volume total: xxx metres cubes". The interface is designed with an orange and white color scheme.

A Mobile application for the customer to select the logs in the timber yard

In real-time, the customer knows the quantity and volume of the selection

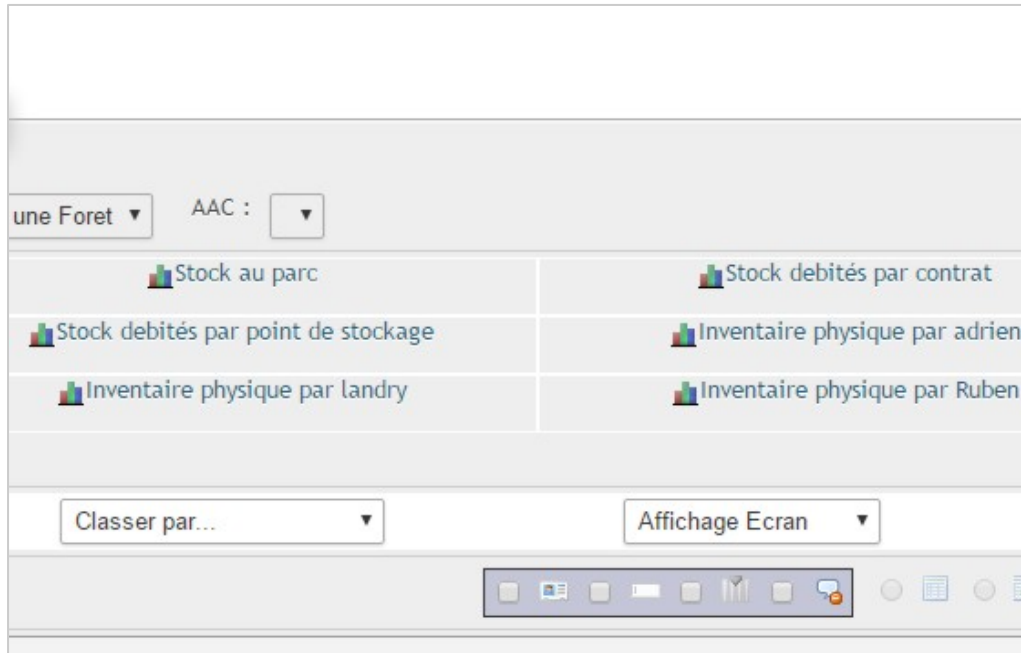
To work in real time implies that traceability is maintained accurately during all the exploitation process

Reliable Tools for employees



- ▶ Time saving in the treatment of information
- ▶ Data are recorded in the field without internet
- ▶ Numerous errors are avoided

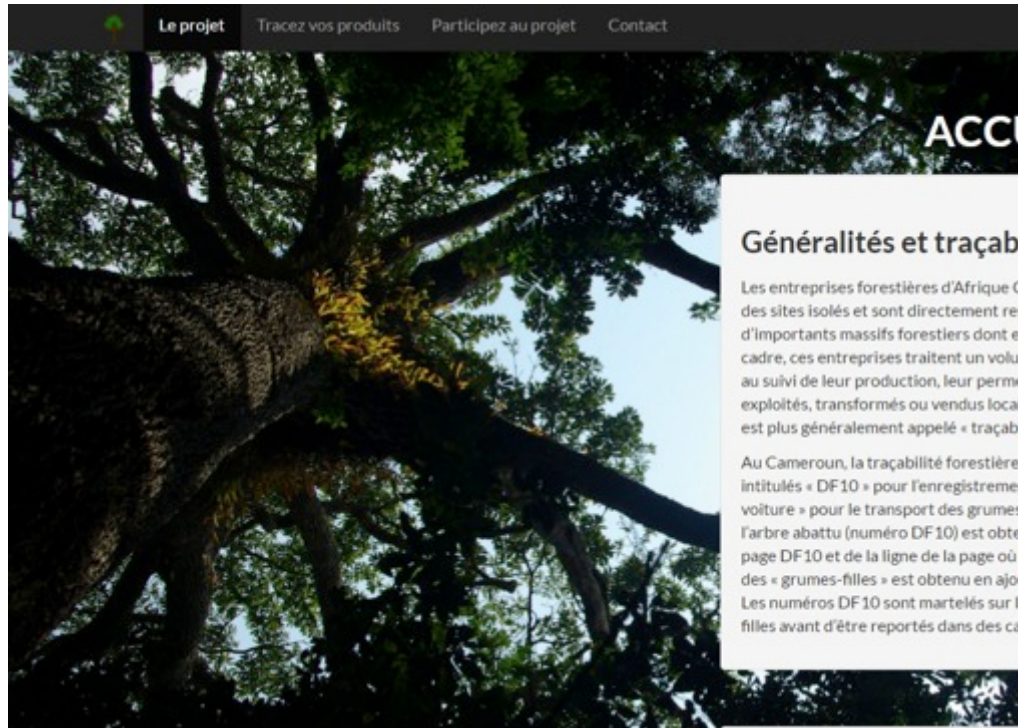
Realization after 6 months



Pallitracks quick reports interface

- ▶ Time saving in data recording
- ▶ Better flow management
- ▶ Quick access to data
- ▶ Trees/logs tracked using web and mobile applications open to the customer

The do list after 6 months



- ▶ Complete the website tracabilite.gfbcam.com
- ▶ Correct bugs on all app
- ▶ Update involved companies employees with last improvement
- ▶ Publish the technical documentation for any company that will like to join the project



Challenges and
what next ?

Deployment challenges



When deploying the solutions, actors met a challenge:

- ❑ Impossibility to have all the park team during training sessions
- ❑ Make sure all the 4 involved companies are updated at the same time

Next Step



- ❖ Use these tools also to track processed wood
- ❖ Widen the project to the other companies of the Cameroon wood industry Body
- ❖ Connect the solutions to the national traceability system (SIGIF 2) once it is operational

Contact

Project implemented by GFBC

- **Website :** www.gfbcam.com
- **Contact :** ouoguia@yahoo.fr

Technology provided by PROSYGMA SARL

- **Mobile:** +237 699 919 576/665 448 359
- **Email:** sohndeh@prosygma-cm.com
- **Website:** www.prosygma-cm.com

Thank you
