



EAST • WEST
MANAGEMENT
INSTITUTE

Program on Rights and Justice (PRAJ)

កម្មវិធីសិទ្ធិ និង យុត្តិធម៌ (ប្រជុំ)

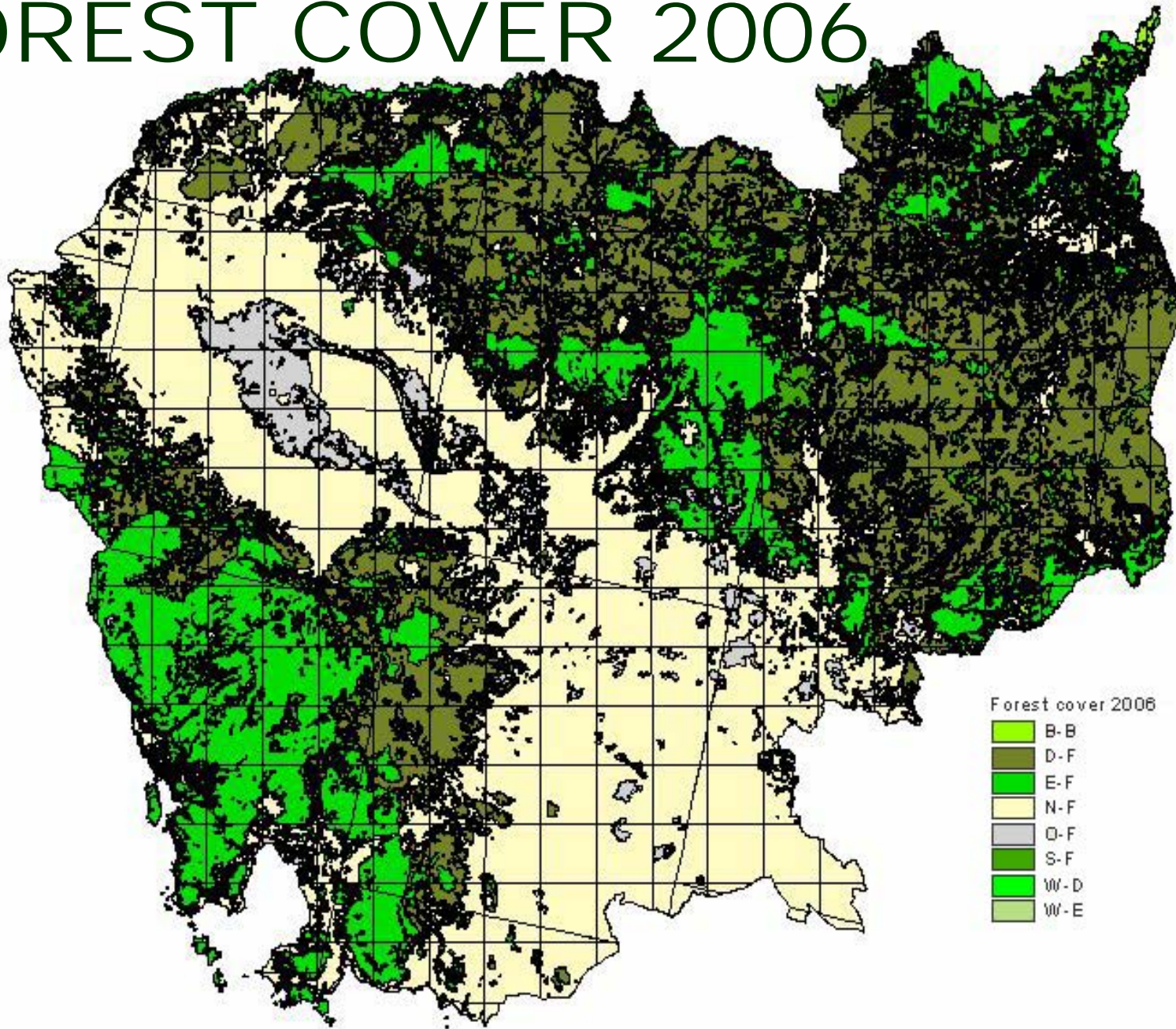
CAMBODIA

MISMANAGED NATURAL RESOURCES AND ALTERNATIVE SOLUTIONS

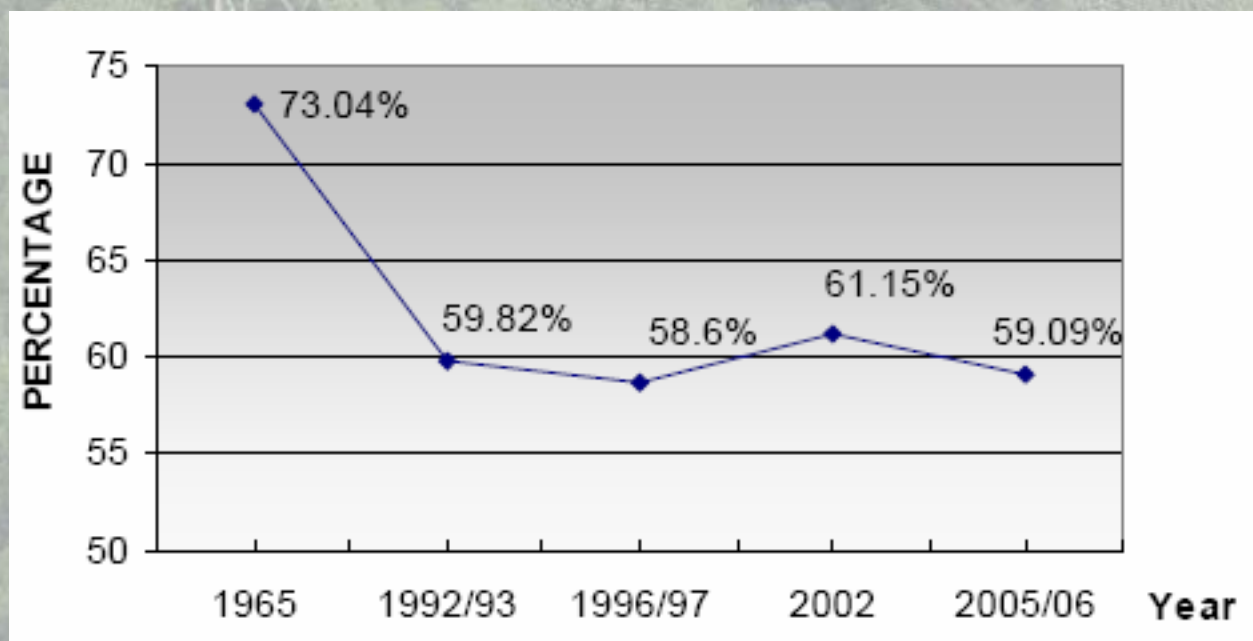
PYROU CHUNG

BIODIVERSITY AND GRASSROOTS ADVOCACY

FOREST COVER 2006



FOREST COVER CHANGE



No.	Assessment by year	Land				Total Land, Ha
		Forest land		Non forest land		
		Ha	%	Ha	%	
1	1965	13,227,100	73.04	4,883,400	26.96	18,110,500
2	1992/93	10,859,695	59.82	7,293,290	40.18	18,152,985
3	1996/97	10,638,209	58.60	7,514,776	41.40	18,152,985
4	2002	11,104,293	61.15	7,056,383	38.85	18,160,677
5	2005/06	10,730,781	59.09	7,429,893	40.91	18,160,674

Source: Technical Working Group on Forestry and Environment. "Forest cover changes in Cambodia 2002-2006, June 19-20, 2007.

ECONOMIC DEVELOPMENT

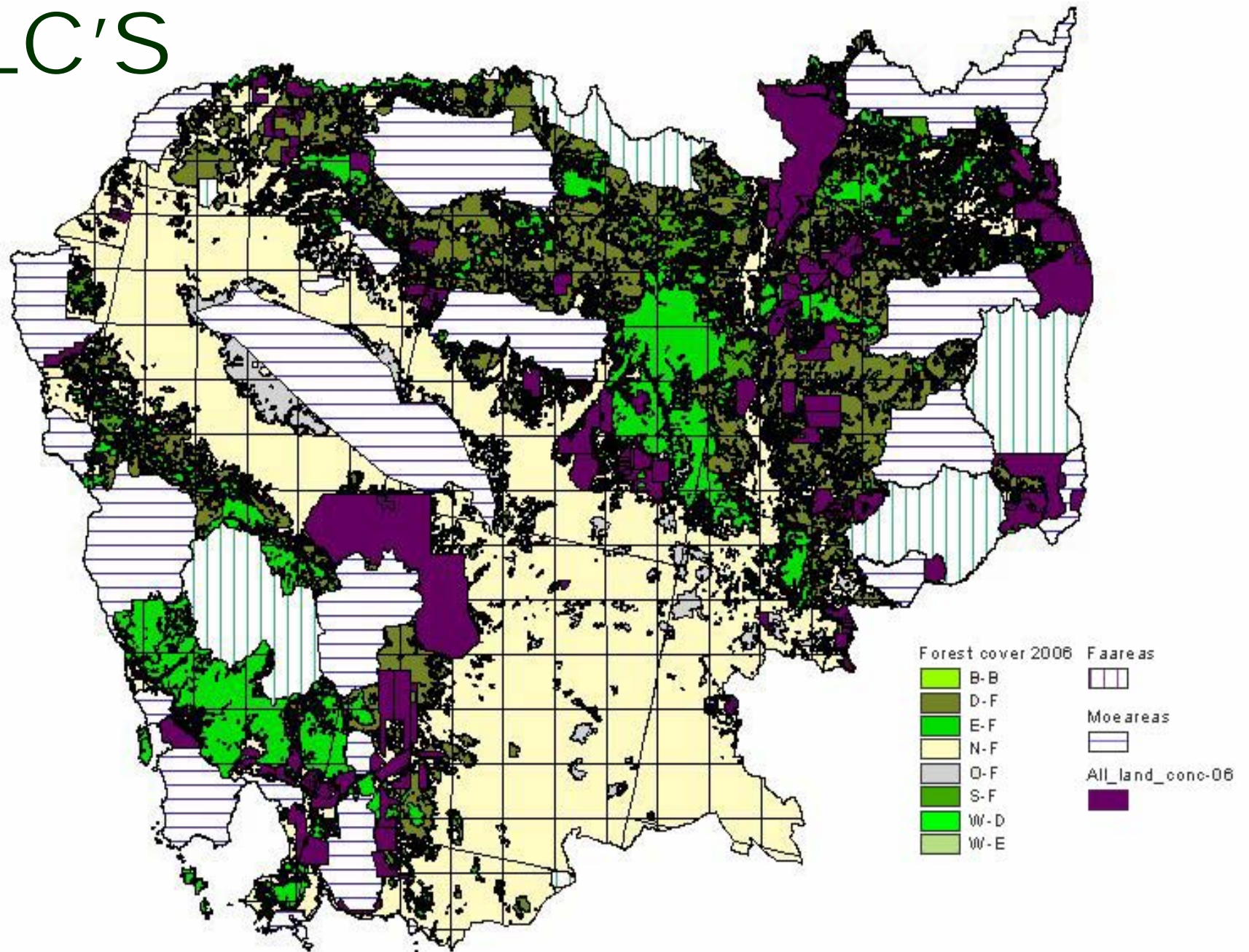
- **Economic Land Concessions**
 - 59 known concessions, 58 companies,
 - Total land of 943,069ha¹
- **Extractive Industries**
 - 74 known mineral concession licenses²
 - At least 9 in protected areas
- **Hydropower Dams**
 - 63 proposed projects (32 \geq 10MW 31 <10MW)³
 - 4 under construction in or along protected area
- **Timber Concessions**
 - Superseded by the above

¹ Source: UNCOHCHR “Economic land concessions in Cambodia. A human rights perspective”

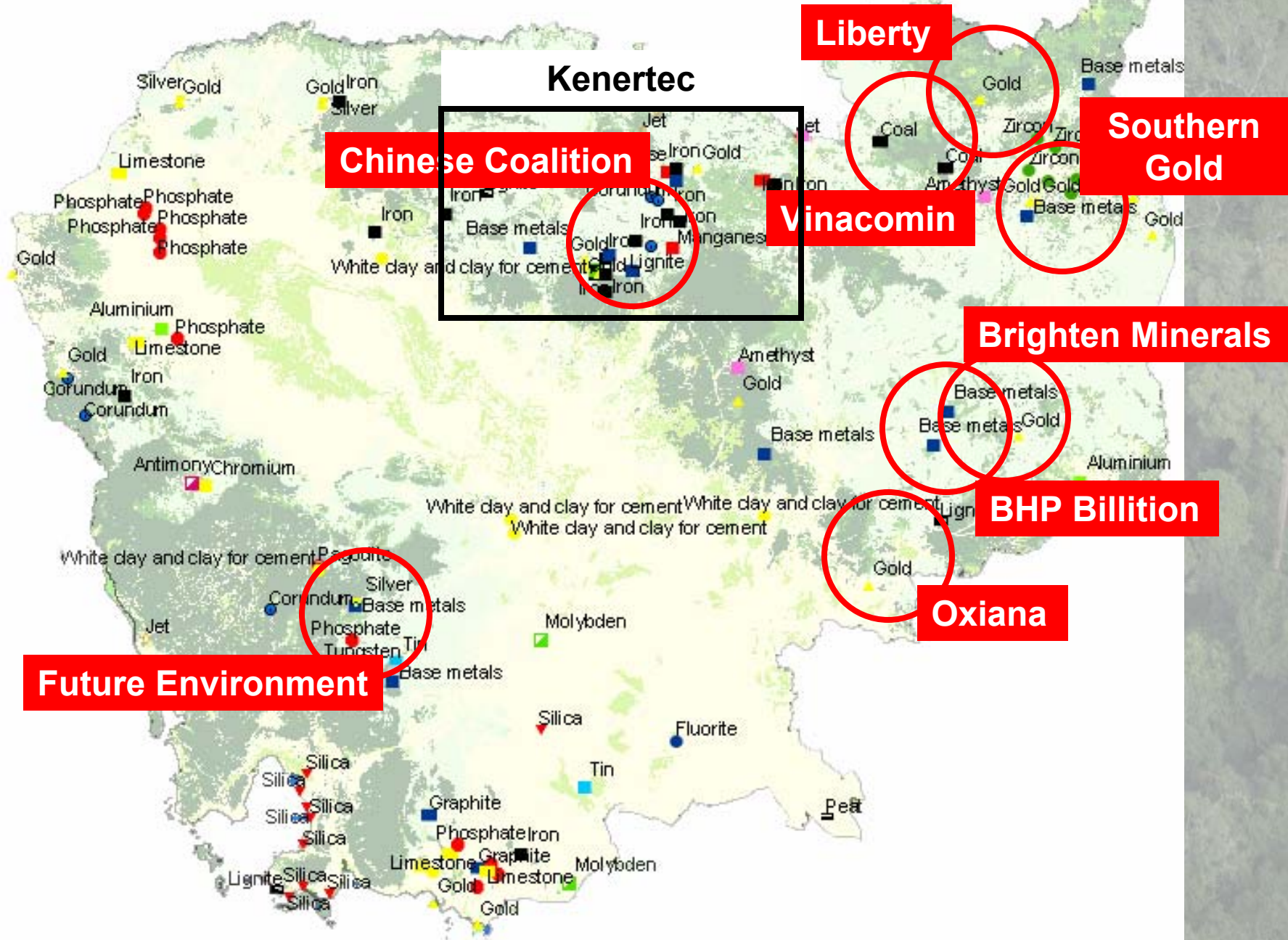
² Source: Oxfam America and MIMÉ website

³ Source: International Rivers “Cambodia’s Hydropower Development and China’s Investment”

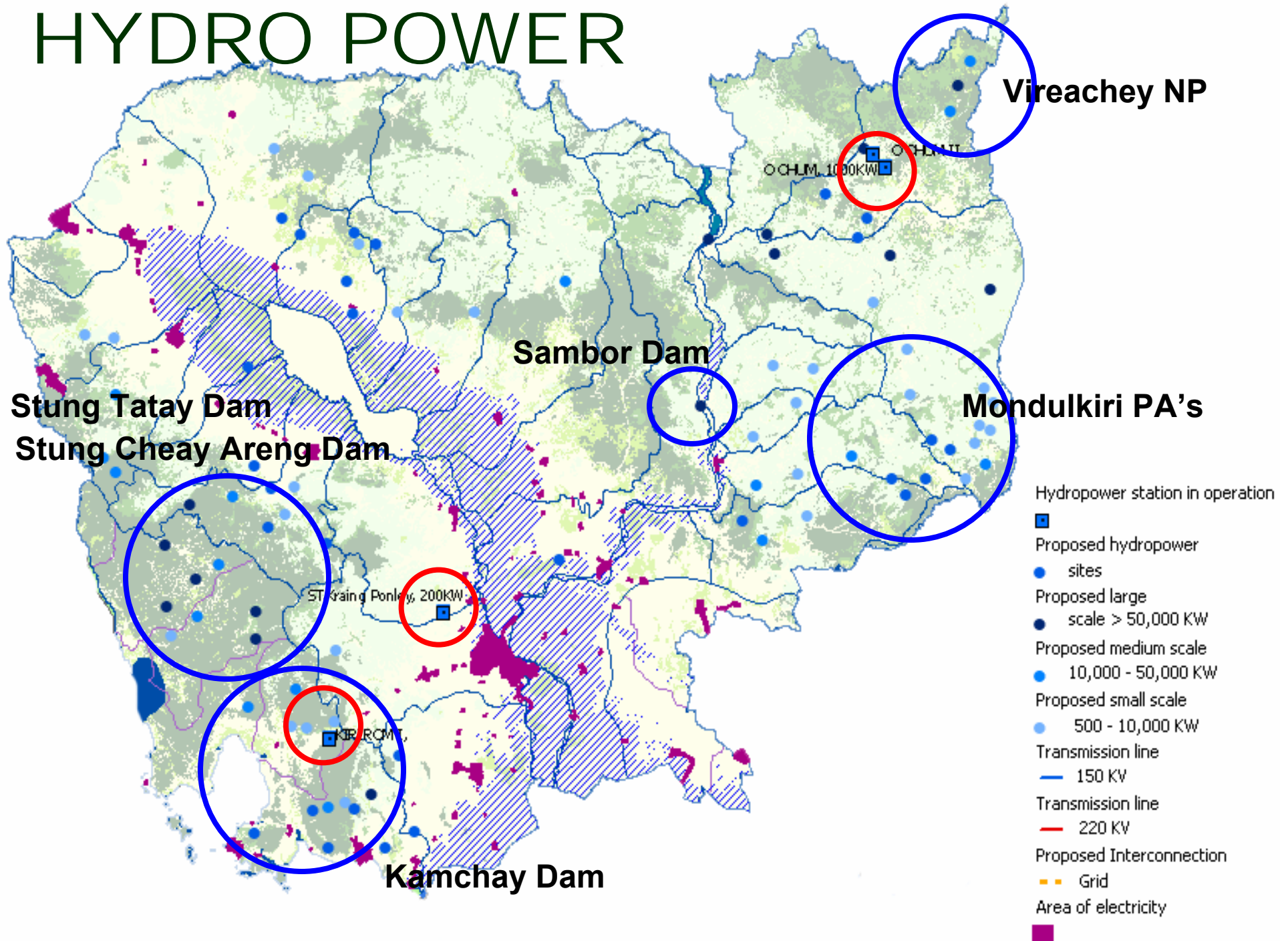
ELC'S



EXTRACTIVE INDUSTRY



HYDRO POWER



UNSUSTAINABLE DEVELOPMENT

- **Cambodia is a supplier of natural resources to it's neighbours.**
 - No added value
 - Limited investment opportunities
 - Limited low skilled employment creation
 - No contribution to poverty alleviation
 - Displacement, social and physical
- **Not achieving MDG targets for**
 - Forest cover or Poverty alleviation

GOVERNANCE

- **Transparency and accountability**
- **Legislation**
- **Law enforcement**
- **Conflict interest and approaches between ministries and donors**
- **Development Priorities**
 - – **short vs. long term**
- **Corruption**

ALTERNATIVE DEVELOPMENT

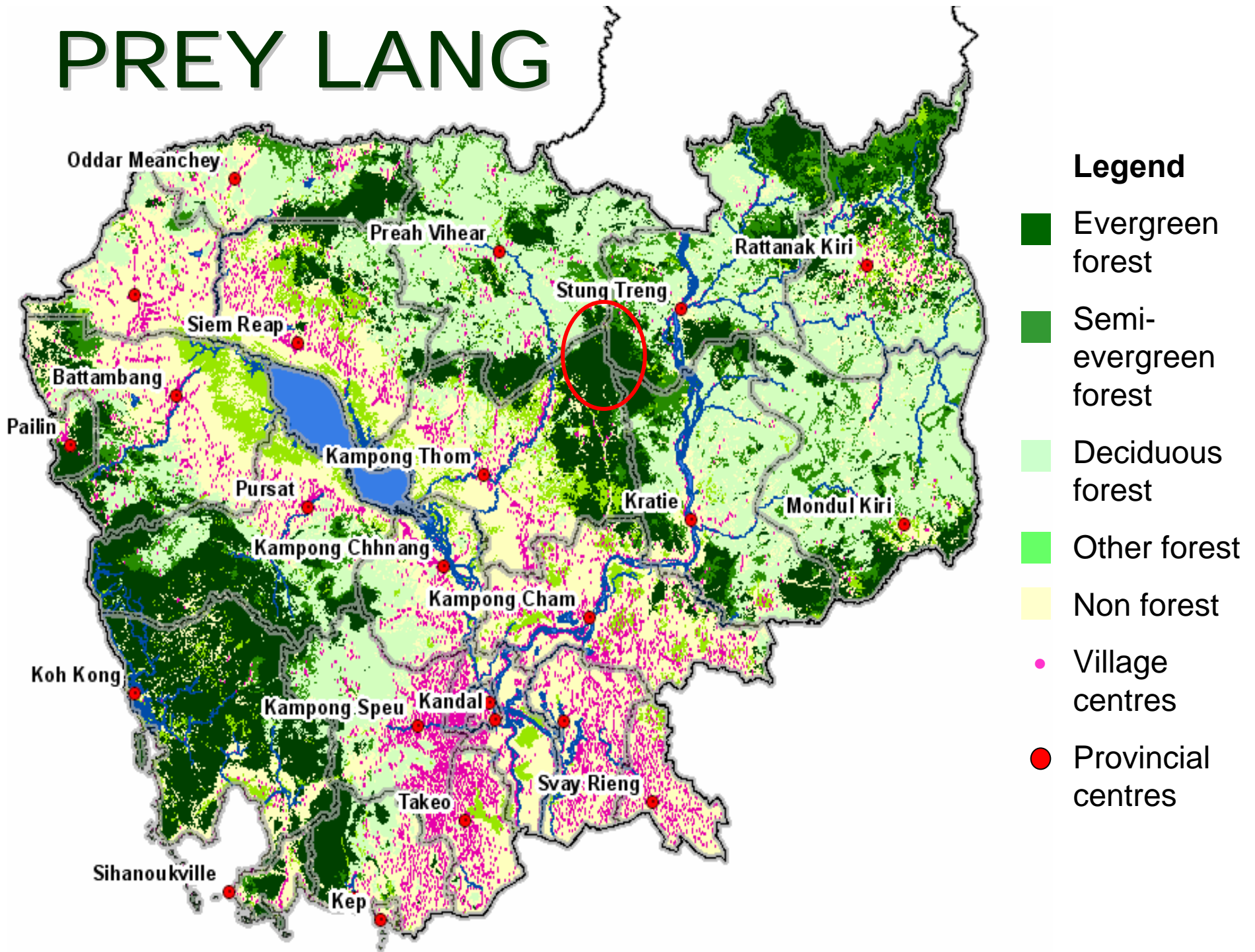
- Plan to mitigate environmental and social impacts
- Exploit resources sustainably
- Smaller scale local production
 - Local food, local energy
- Market chain development for increased ownership
- Ecological services
- Climate change issues
 - CDM and REDD Solutions
 - Sustainable living alternatives
- Improved education and information

An aerial photograph showing a vast, dense tropical forest canopy. The forest is a deep green color, with many tall trees visible. The horizon is visible in the distance under a clear sky.

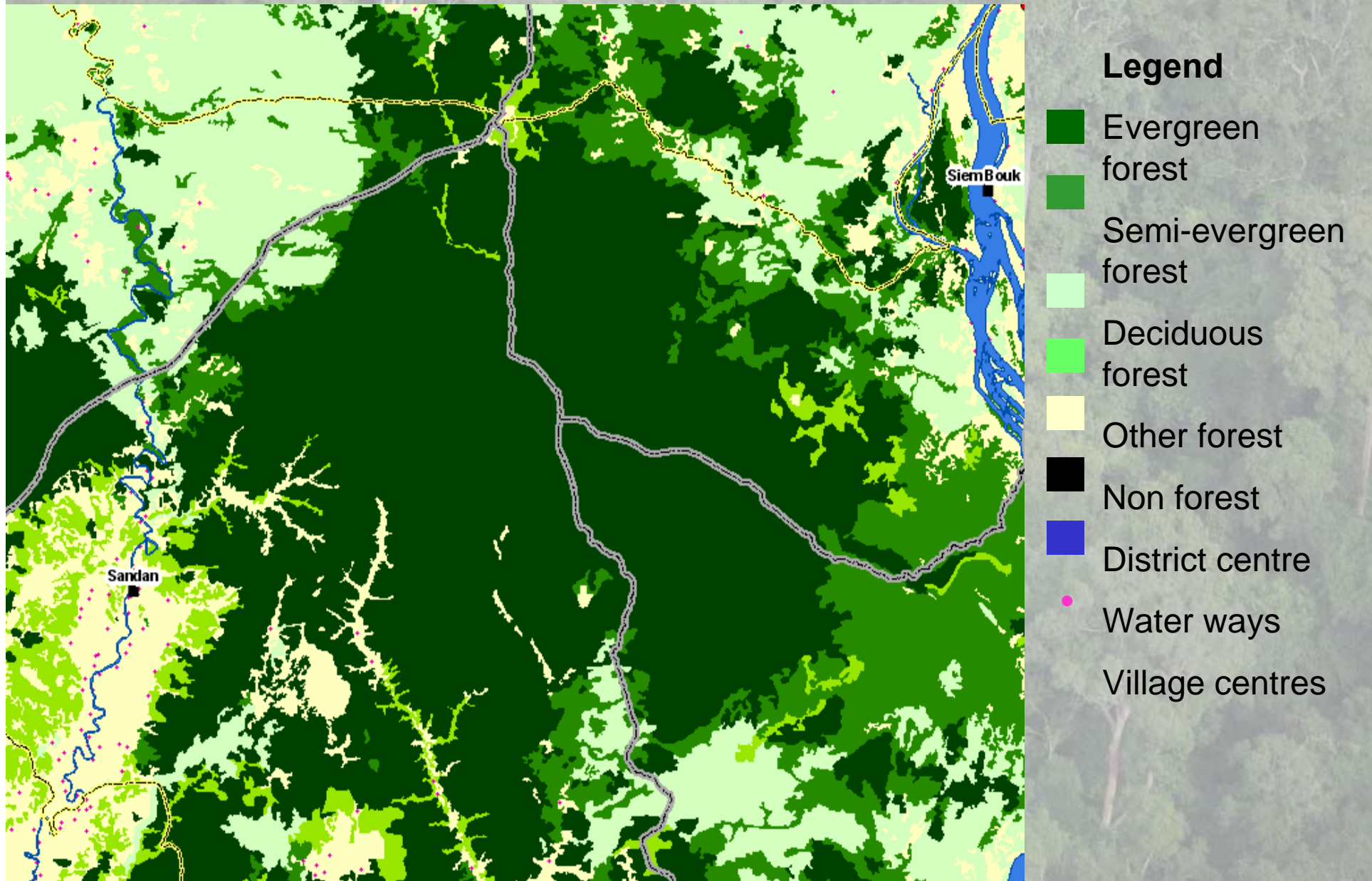
PREY LANG

LAST REMAINING LOWLAND
DRY EVERGREEN FOREST

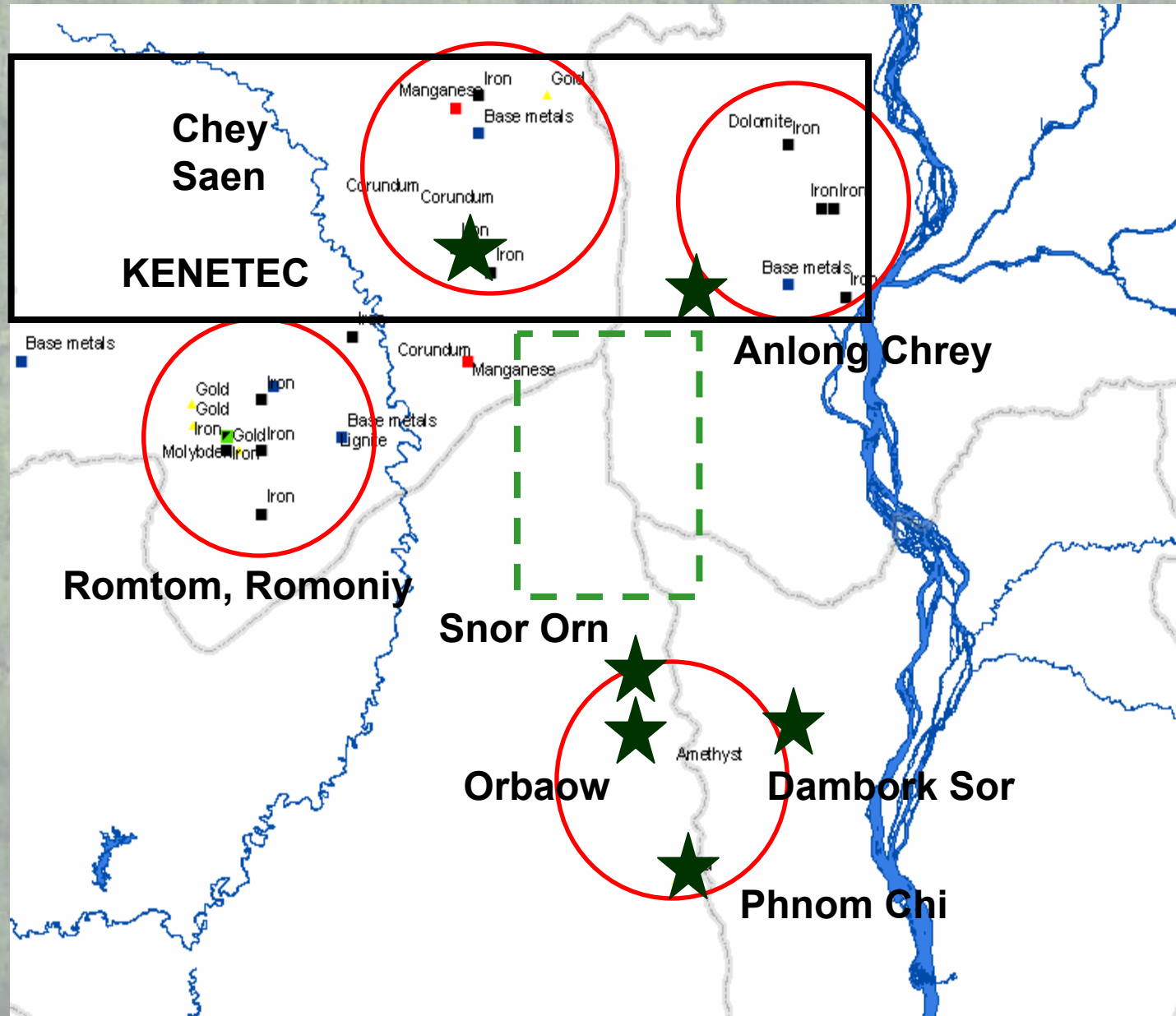
PREY LANG



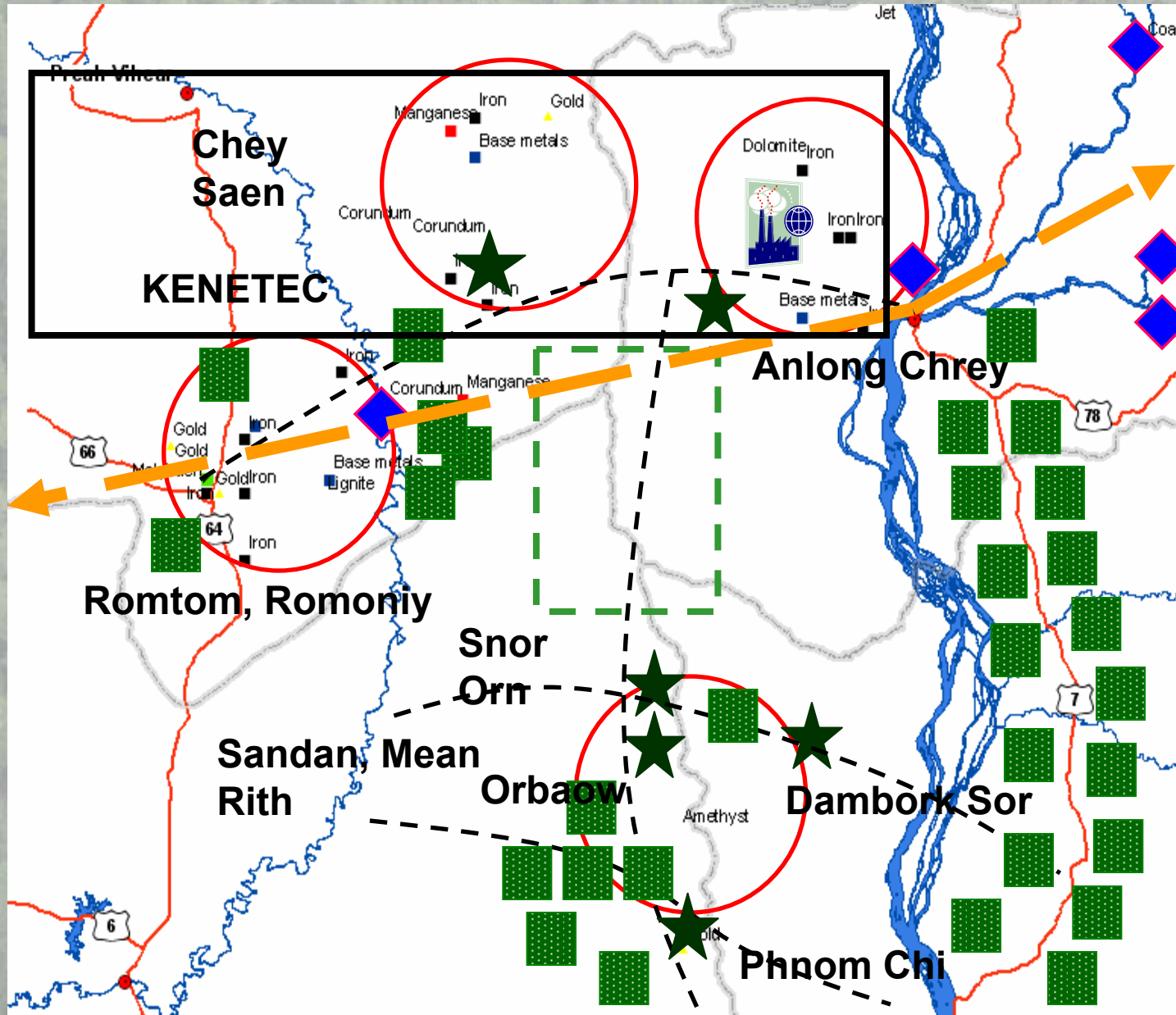
Map of Prey Lang Core Zone



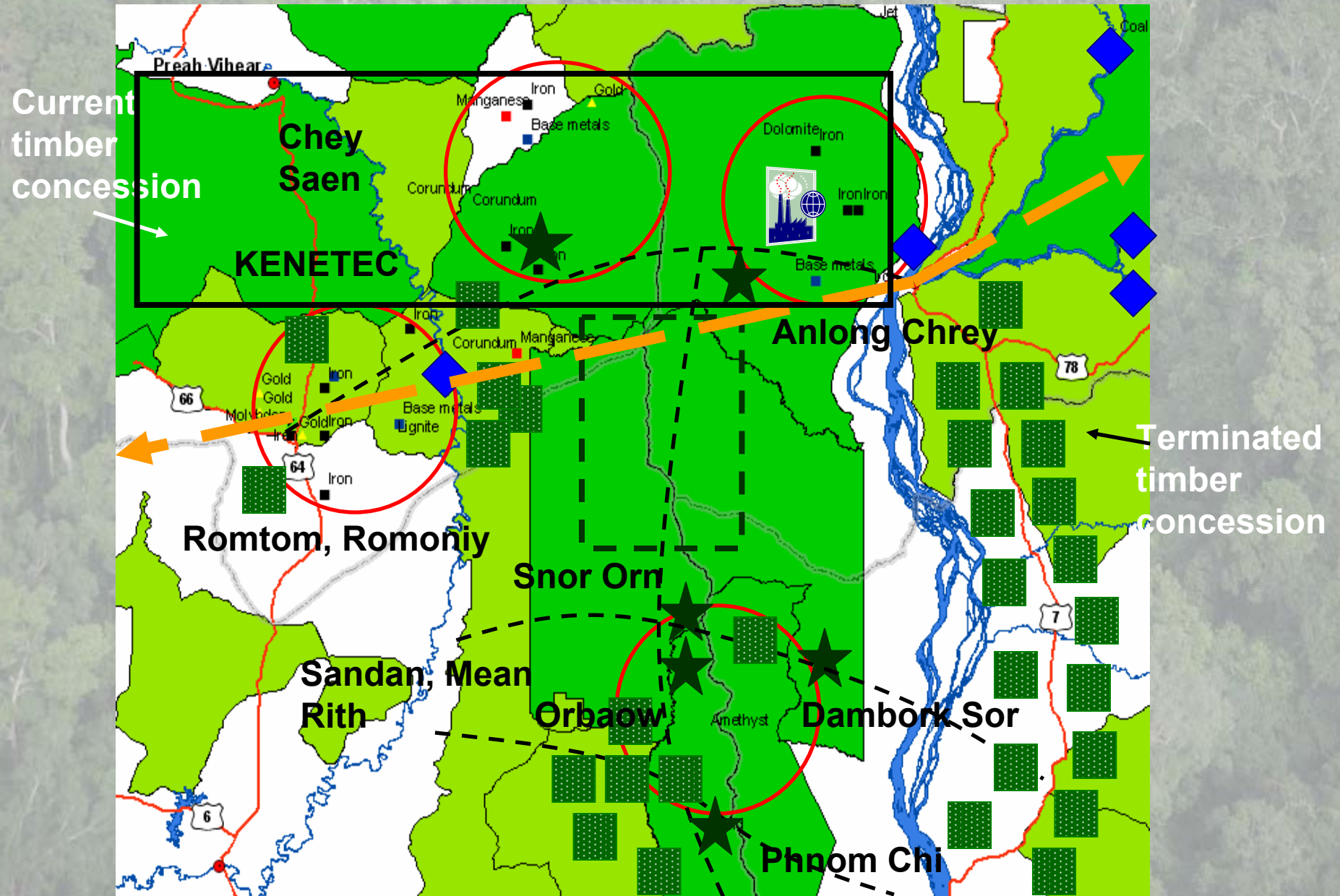
DEVELOPMENT or THREATS



DEVELOPMENT or THREATS



DEVELOPMENT or THREATS



PREY LANG SOLUTION

COMMUNITY MANAGED CONSERVATION CONCESSION

1. Advocacy
2. Acquire protection status or by-in from Gov
3. Concession Management
 - Functioning skilled management committee
 - Local sustainable exploitation, with community participation
 - Carbon financing potential - REDD